

CLC-3 (B-21): sc-133466

BACKGROUND

The family of voltage-dependent chloride channels (CLCs) regulate cellular trafficking of chloride ions, a critical component of all living cells. CLCs regulate excitability in muscle and nerve cells, aid in organic solute transport and maintain cellular volume. The genes encoding human CLC-1 through CLC-7 map to chromosomes 7q34, 3q27.1, 4q33, Xp22.2, Xp11.22, 1p36.22 and 16p13.3, respectively. CLC-1 is highly expressed in skeletal muscle. Mutations in the gene encoding CLC-1 lead to myotonia, an inheritable disorder characterized by muscle stiffness and renal salt wasting. CLC-2 is highly expressed in the epithelia of several organs including the lungs, which suggests CLC-2 may be a possible therapeutic target for cystic fibrosis. CLC-3 expression is particularly abundant in neuronal tissue, while CLC-4 expression is evident in skeletal and cardiac muscle as well as brain. Mutations in the gene encoding CLC-5 lead to Dent's disease, a renal disorder characterized by proteinuria and hypercalciuria. CLC-6 and CLC-7 are broadly expressed in several tissues including testis, kidney, brain and muscle.

REFERENCES

1. Koch, M.C., et al. 1992. The skeletal muscle chloride channel in dominant and recessive human myotonia. *Science* 257: 797-800.
2. Pook, M.A., et al. 1993. Dent's disease, a renal Fanconi syndrome with nephrocalcinosis and kidney stones, is associated with a microdeletion involving DXS255 and maps to Xp11.22. *Hum. Mol. Genet.* 2: 2129-2134.
3. van Slegtenhorst, M.A., et al. 1994. A gene from the Xp22.3 region shares homology with voltage-gated chloride channels. *Hum. Mol. Genet.* 3: 547-552.
4. Brandt, S., et al. 1995. CLC-6 and CLC-7 are two novel broadly expressed members of the CLC chloride channel family. *FEBS Lett.* 377: 15-20.
5. Cid, L.P., et al. 1995. Cloning of a putative human voltage-gated chloride channel (CLC-2) cDNA widely expressed in human tissues. *Hum. Mol. Genet.* 4: 407-413.
6. Borsani, G., et al. 1995. Characterization of a human and murine gene (CLCN3) sharing similarities to voltage-gated chloride channels and to a yeast integral membrane protein. *Genomics* 27: 131-141.

CHROMOSOMAL LOCATION

Genetic locus: CLCN3 (human) mapping to 4q33.

SOURCE

CLC-3 (B-21) is a Protein A purified rabbit polyclonal antibody raised against synthetic CLC-3 peptide of human origin.

PRODUCT

Each vial contains 100 µg IgG in 1.0 ml PBS with < 0.1% sodium azide, 0.1% gelatin and < 0.02% sucrose.

STORAGE

Store at 4° C, ****DO NOT FREEZE****. Stable for one year from the date of shipment. Non-hazardous. No MSDS required.

APPLICATIONS

CLC-3 (B-21) is recommended for detection of CLC-3 of human origin by Western Blotting (starting dilution 1:200, dilution range 1:100-1:1000), immunoprecipitation [1-2 µg per 100-500 µg of total protein (1 ml of cell lysate)], immunofluorescence (starting dilution 1:50, dilution range 1:50-1:500), immunohistochemistry (including paraffin-embedded sections) (starting dilution 1:50, dilution range 1:50-1:500) and solid phase ELISA (starting dilution 1:30, dilution range 1:30-1:3000).

Suitable for use as control antibody for CLC-3 siRNA (h): sc-42381, CLC-3 shRNA Plasmid (h): sc-42381-SH and CLC-3 shRNA (h) Lentiviral Particles: sc-42381-V.

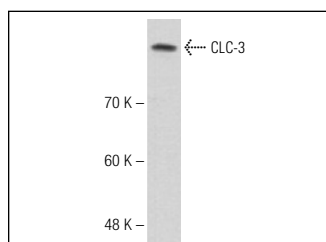
Molecular Weight of CLC-3: 85 kDa.

Positive Controls: Jurkat whole cell lysate: sc-2204.

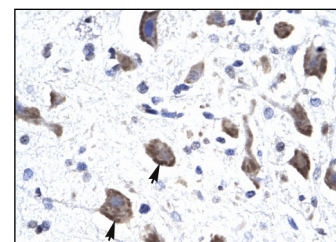
RECOMMENDED SECONDARY REAGENTS

To ensure optimal results, the following support (secondary) reagents are recommended: 1) Western Blotting: use goat anti-rabbit IgG-HRP: sc-2004 (dilution range: 1:2000-1:100,000) or Cruz Marker™ compatible goat anti-rabbit IgG-HRP: sc-2030 (dilution range: 1:2000-1:5000), Cruz Marker™ Molecular Weight Standards: sc-2035, TBS Blotto A Blocking Reagent: sc-2333 and Western Blotting Luminol Reagent: sc-2048. 2) Immunoprecipitation: use Protein A/G PLUS-Agarose: sc-2003 (0.5 ml agarose/2.0 ml). 3) Immunofluorescence: use goat anti-rabbit IgG-FITC: sc-2012 (dilution range: 1:100-1:400) or goat anti-rabbit IgG-TR: sc-2780 (dilution range: 1:100-1:400) with UltraCruz™ Mounting Medium: sc-24941. 4) Immunohistochemistry: use ImmunoCruz™: sc-2051 or ABC: sc-2018 rabbit IgG Staining Systems.

DATA



CLC-3 (B-21): sc-133466. Western blot analysis of CLC-3 expression in Jurkat whole cell lysate.



CLC-3 (B-21): sc-133466. Immunoperoxidase staining of formalin-fixed, paraffin-embedded human brain tissue showing cytoplasmic localization.

RESEARCH USE

For research use only, not for use in diagnostic procedures.

MONOS
Satisfaction
Guaranteed

Try **CLC-3 (H-4): sc-390010**, our highly recommended monoclonal alternative to CLC-3 (B-21).