

Coronin 1A (E-21): sc-133476

BACKGROUND

Coronins are a family of WD repeat-containing, Actin-binding proteins that localize to submembraneous areas and regulate cell motility and cytoskeletal rearrangement. Coronin 1A (CORO1A, CLIPINA, CLABP, TACO, p57) can form coiled coil-mediated homotrimeric complexes that influence early phagosome formation. PKC-dependent phosphorylation of Coronin 1B (CORO1B) at Serine 2 regulates leading edge dynamics and cell motility in fibroblasts through interactions with Arp2/3 complex. Coronin 1C (CORO1C, Coronin 3, HCRNN4) is abundant in differentiating Neuro-2a cells, PC-12 cells and primary oligodendrocytes, where it is thought to influence neuron morphogenesis and migration. Coronin 2A (CORO2A, CLIPINB, IR10, WDR2) is a component of the approximately 1.5-2 megadalton N-CoR (nuclear receptor corepressor) complex of 10-12 proteins, which recruits HDACs to generate repressive chromatin. Coronin 7 (CORO7, CRN7) localizes to the Golgi membrane and influences the organization of intracellular membrane compartments and vesicular trafficking. Coronin 2B (CORO2B, CLIPINC) and Coronin 6 (CORO6) are similar to other members of this family, since they possess a conserved basic N-terminal motif and 3-10 WD repeats clustered in one to two core domains.

REFERENCES

- Mishima, M., et al. 1999. Coronin localizes to leading edges and is involved in cell spreading and lamellipodium extension in vertebrate cells. *J. Cell Sci.* 112: 2833-2842.
- Spoerl, Z., et al. 2002. Oligomerization, F-actin interaction, and membrane association of the ubiquitous mammalian Coronin 3 are mediated by its carboxyl terminus. *J. Biol. Chem.* 277: 48858-48867.
- Yoon, H.G., et al. 2003. Purification and functional characterization of the human N-CoR complex: the roles of HDAC3, TBL1 and TBLR1. *EMBO J.* 22: 1336-1346.
- Rybakin, V., et al. 2004. Coronin 7, the mammalian POD-1 homologue, localizes to the Golgi apparatus. *FEBS Lett.* 573: 161-167.

CHROMOSOMAL LOCATION

Genetic locus: CORO1A (human) mapping to 16p11.2; Coro1a (mouse) mapping to 7 F3.

SOURCE

Coronin 1A (E-21) is a Protein A purified rabbit polyclonal antibody raised against a C-terminal region of Coronin 1A peptide of human origin.

PRODUCT

Each vial contains 100 µg IgG in 1.0 ml PBS with < 0.1% sodium azide, 0.1% gelatin and < 0.02% sucrose.

STORAGE

Store at 4° C, **DO NOT FREEZE**. Stable for one year from the date of shipment. Non-hazardous. No MSDS required.

APPLICATIONS

Coronin 1A (E-21) is recommended for detection of Coronin 1A of mouse, rat and human origin by Western Blotting (starting dilution 1:200, dilution range 1:100-1:1000), immunoprecipitation [1-2 µg per 100-500 µg of total protein (1 ml of cell lysate)] and solid phase ELISA (starting dilution 1:30, dilution range 1:30-1:3000).

Coronin 1A (E-21) is also recommended for detection of Coronin 1A in additional species, including equine, bovine, porcine and canine.

Suitable for use as control antibody for Coronin 1A siRNA (h): sc-60434, Coronin 1A siRNA (m): sc-60435, Coronin 1A shRNA Plasmid (h): sc-60434-SH, Coronin 1A shRNA Plasmid (m): sc-60435-SH, Coronin 1A shRNA (h) Lentiviral Particles: sc-60434-V and Coronin 1A shRNA (m) Lentiviral Particles: sc-60435-V.

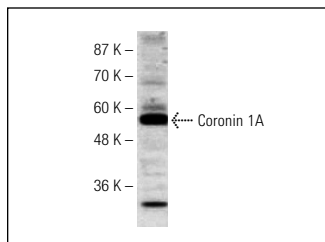
Molecular Weight of Coronin 1A: 57 kDa.

Positive Controls: Jurkat whole cell lysate: sc-2204 or K-562 whole cell lysate: sc-2203.

RECOMMENDED SECONDARY REAGENTS

To ensure optimal results, the following support (secondary) reagents are recommended: 1) Western blotting: use goat anti-rabbit IgG-HRP: sc-2004 (dilution range: 1:2000-1:100,000) or Cruz Marker™ compatible goat anti-rabbit IgG-HRP: sc-2030 (dilution range: 1:2000-1:5000), Cruz Marker™ Molecular Weight Standards: sc-2035, TBS Blotto A Blocking Reagent: sc-2333 and Western Blotting Luminol Reagent: sc-2048. 2) Immunoprecipitation: use Protein A/G PLUS-Agarose: sc-2003 (0.5 ml agarose/2.0 ml).

DATA



Coronin 1A (E-21): sc-133476. Western blot analysis of Coronin 1A expression in Jurkat whole cell lysate.

RESEARCH USE

For research use only, not for use in diagnostic procedures.



Try **Coronin 1A (14.1): sc-100925**, our highly recommended monoclonal alternative to Coronin 1A (E-21).