

COX15 (E-22): sc-133477

BACKGROUND

The cytochrome c oxidase (COX) family of proteins function as the final electron donor in the respiratory chain to drive a proton gradient across the inner mitochondrial membrane, ultimately resulting in the production of water. The mammalian COX apoenzyme is a dimer, with each monomer consisting of 13 subunits, some of which are mitochondrial and some of which are nuclear. COX15 (cytochrome c oxidase assembly protein COX15 homolog) is a 410 amino acid multi-pass mitochondrial membrane protein belonging to the COX15/ctaA family. Existing as two alternatively spliced isoforms, COX15 is predominantly expressed in tissues containing high rates of oxidative phosphorylation including brain, heart and muscle. COX15 defects are the cause of a neurodegenerative disorder known as Leigh syndrome and cytochrome c oxidase deficiency (COX deficiency).

REFERENCES

1. Kennaway, N.G., Carrero-Valenzuela, R.D., Ewart, G., Balan, V.K., Lightowlers, R., Zhang, Y.Z., Powell, B.R., Capaldi, R.A. and Buist, N.R. 1990. Isoforms of mammalian cytochrome c oxidase: correlation with human cytochrome c oxidase deficiency. *Pediatr. Res.* 28: 529-535.
2. Petruzella, V., Tiranti, V., Fernandez, P., Ianna, P., Carozzo, R. and Zeviani, M. 1998. Identification and characterization of human cDNAs specific to BCS1, PET112, SCO1, COX15, and COX11, five genes involved in the formation and function of the mitochondrial respiratory chain. *Genomics* 54: 494-504.
3. Barros, M.H., Carlson, C.G., Glerum, D.M. and Tzagoloff, A. 2001. Involvement of mitochondrial ferredoxin and COX15p in hydroxylation of Heme O. *FEBS Lett.* 492: 133-138.
4. Antonicka, H., Mattman, A., Carlson, C.G., Glerum, D.M., Hoffbuhr, K.C., Leary, S.C., Kennaway, N.G. and Shoubridge, E.A. 2003. Mutations in COX15 produce a defect in the mitochondrial heme biosynthetic pathway, causing early-onset fatal hypertrophic cardiomyopathy. *Am. J. Hum. Genet.* 72: 101-114.
5. Oquendo, C.E., Antonicka, H., Shoubridge, E.A., Reardon, W. and Brown, G.K. 2004. Functional and genetic studies demonstrate that mutation in the COX15 gene can cause Leigh syndrome. *J. Med. Genet.* 41: 540-544.
6. Vitali, M., Venturelli, E., Galimberti, D., Benerini Gatta, L., Scarpini, E. and Finazzi, D. 2009. Analysis of the genes coding for subunit 10 and 15 of cytochrome c oxidase in Alzheimer's disease. *J. Neural. Transm.* 116: 1635-1641.
7. Online Mendelian Inheritance in Man, OMIM™. 2009. Johns Hopkins University, Baltimore, MD. MIM Number: 603646. World Wide Web URL: <http://www.ncbi.nlm.nih.gov/omim/>

CHROMOSOMAL LOCATION

Genetic locus: COX15 (human) mapping to 10q24.2.

SOURCE

COX15 (E-22) is a Protein A purified rabbit polyclonal antibody raised against synthetic COX15 peptide of human origin.

PRODUCT

Each vial contains 100 µg IgG in 1.0 ml PBS with < 0.1% sodium azide, 0.1% gelatin and < 0.02% sucrose.

APPLICATIONS

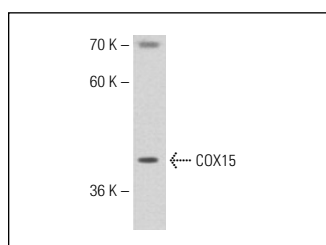
COX15 (E-22) is recommended for detection of COX15 of human origin by Western Blotting (starting dilution 1:200, dilution range 1:100-1:1000), immunoprecipitation [1-2 µg per 100-500 µg of total protein (1 ml of cell lysate)], immunofluorescence (starting dilution 1:50, dilution range 1:50-1:500), immunohistochemistry (including paraffin-embedded sections) (starting dilution 1:50, dilution range 1:50-1:500) and solid phase ELISA (starting dilution 1:30, dilution range 1:30-1:3000).

Suitable for use as control antibody for COX15 siRNA (h): sc-90524, COX15 shRNA Plasmid (h): sc-90524-SH and COX15 shRNA (h) Lentiviral Particles: sc-90524-V.

Molecular Weight of COX15: 46 kDa.

Positive Controls: Hep G2 cell lysate: sc-2227.

DATA



COX15 (E-22): sc-133477. Western blot analysis of COX15 expression in Hep G2 whole cell lysate.

STORAGE

Store at 4° C, ****DO NOT FREEZE****. Stable for one year from the date of shipment. Non-hazardous. No MSDS required.

RESEARCH USE

For research use only, not for use in diagnostic procedures.

PROTOCOLS

See our web site at www.scbt.com or our catalog for detailed protocols and support products.

MONOS
Satisfaction
Guaranteed

Try **COX15 (G-10): sc-390987**, our highly recommended monoclonal alternative to COX15 (E-22).