

CROCCL2 (F-25): sc-133485

BACKGROUND

CROCCL2 (putative ciliary rootlet coiled-coil protein-like 2 protein), also known as CROCCP3 (ciliary rootlet coiled-coil protein pseudogene 3), is a 287 amino acid that is encoded by a gene that maps to human chromosome 1p36.13. Chromosome 1 is the largest human chromosome spanning about 260 million base pairs and making up 8% of the human genome. There are about 3,000 genes on chromosome 1, and considering the great number of genes there are also a large number of diseases associated with chromosome 1. Notably, the rare aging disease Hutchinson-Gilford progeria is associated with the LMNA gene which encodes lamin A. When defective, the LMNA gene product can build up in the nucleus and cause characteristic nuclear blebs. The mechanism of rapidly enhanced aging is unclear and is a topic of continuing exploration. The MUTYH gene is located on chromosome 1 and is partially responsible for familial adenomatous polyposis. Stickler syndrome, Parkinsons, Gaucher disease and Usher syndrome are also associated with chromosome 1.

REFERENCES

1. Watson, M.L., et al. 1990. Genomic organization of the selectin family of leukocyte adhesion molecules on human and mouse chromosome 1. *J. Exp. Med.* 172: 263-272.
2. Blackwood, D.H., et al. 2001. Schizophrenia and affective disorders— cosegregation with a translocation at chromosome 1q42 that directly disrupts brain-expressed genes: clinical and P300 findings in a family. *Am. J. Hum. Genet.* 69: 428-433.
3. Weise, A., et al. 2005. New insights into the evolution of chromosome 1. *Cytogenet. Genome Res.* 108: 217-222.
4. Lans, H. and Hoeijmakers, J.H. 2006. Cell biology: aging nucleus gets out of shape. *Nature* 440: 32-34.
5. Hennah, W., et al. 2006. Genes and schizophrenia: beyond schizophrenia: the role of DISC1 in major mental illness. *Schizophr. Bull.* 32: 409-416.
6. Gregory, S.G., et al. 2006. The DNA sequence and biological annotation of human chromosome 1. *Nature* 441: 315-321.
7. Marzin, Y., et al. 2006. Chromosome 1 abnormalities in multiple myeloma. *Anticancer Res.* 26: 953-959.
8. McClintock, D., et al. 2006. Hutchinson-Gilford progeria mutant lamin A primarily targets human vascular cells as detected by an anti-Lamin A G608G antibody. *Proc. Natl. Acad. Sci. USA* 103: 2154-2159.
9. Scaffidi, P. and Misteli, T. 2006. Lamin A-dependent nuclear defects in human aging. *Science* 312: 1059-1063.

CHROMOSOMAL LOCATION

Genetic locus: CROCCL2 (human) mapping to 1p36.13.

SOURCE

CROCCL2 (F-25) is an affinity purified rabbit polyclonal antibody raised against synthetic CROCCL2 peptide of human origin.

PRODUCT

Each vial contains 50 µg IgG in 500 µl PBS with < 0.1% sodium azide, 0.1% gelatin and < 0.02% sucrose.

APPLICATIONS

CROCCL2 (F-25) is recommended for detection of CROCCL2 of human origin by Western Blotting (starting dilution 1:200, dilution range 1:100-1:1000), immunoprecipitation [1-2 µg per 100-500 µg of total protein (1 ml of cell lysate)] and solid phase ELISA (starting dilution 1:30, dilution range 1:30-1:3000).

Suitable for use as control antibody for CROCCL2 siRNA (h): sc-78909, CROCCL2 shRNA Plasmid (h): sc-78909-SH and CROCCL2 shRNA (h) Lentiviral Particles: sc-78909-V.

Molecular Weight (predicted) of CROCCL2: 33 kDa.

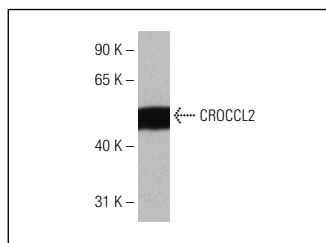
Molecular Weight (observed) of CROCCL2: 55 kDa.

Positive Controls: MCF7 whole cell lysate: sc-2206.

RECOMMENDED SECONDARY REAGENTS

To ensure optimal results, the following support (secondary) reagents are recommended: 1) Western Blotting: use goat anti-rabbit IgG-HRP: sc-2004 (dilution range: 1:2000-1:100,000) or Cruz Marker™ compatible goat anti-rabbit IgG-HRP: sc-2030 (dilution range: 1:2000-1:5000), Cruz Marker™ Molecular Weight Standards: sc-2035, TBS Blotto A Blocking Reagent: sc-2333 and Western Blotting Luminol Reagent: sc-2048. 2) Immunoprecipitation: use Protein A/G PLUS-Agarose: sc-2003 (0.5 ml agarose/2.0 ml).

DATA



CROCCL2 (F-25): sc-133485. Western blot analysis of CROCCL2 expression in MCF7 whole cell lysate.

STORAGE

Store at 4° C, ****DO NOT FREEZE****. Stable for one year from the date of shipment. Non-hazardous. No MSDS required.

RESEARCH USE

For research use only, not for use in diagnostic procedures.

PROTOCOLS

See our web site at www.scbt.com or our catalog for detailed protocols and support products.