

Cytoplasmic CysRS (H-25): sc-133495

BACKGROUND

Aminoacyl-tRNA synthetases consist of a family of enzymes that catalyze the specific aminoacylation of tRNA by their cognate amino acid in the initial step of ribosome-dependent protein biosynthesis. Cytoplasmic CysRS (cysteinyl-tRNA synthetase, cytoplasmic), also known as CARS, is a 748 amino acid member of the class-I aminoacyl-tRNA synthetase protein family. Cytoplasmic CysRS is a monomeric protein that binds one zinc ion per subunit for use as a cofactor. Cytoplasmic CysRS uses ATP to convert L-cysteine and tRNA(Cys) into ADP, a diphosphate and L-cysteinyl-tRNA(Cys). A chromosomal aberration of the gene that encodes Cytoplasmic CysRS is associated with inflammatory myofibroblastic tumors (IMTs). Cytoplasmic CysRS is expressed as two isoforms produced by alternative splicing events.

REFERENCES

1. Cruzen, M.E., et al. 1993. Assignment of the cysteinyl-tRNA synthetase gene (CARS) to 11p15.5. *Genomics* 15: 692-693.
2. Kim, J.E., et al. 2000. An elongation factor-associating domain is inserted into human cysteinyl-tRNA synthetase by alternative splicing. *Nucleic Acids Res.* 28: 2866-2872.
3. Davidson, E., et al. 2001. Isolation of two cDNAs encoding functional human cytoplasmic cysteinyl-tRNA synthetase. *Biol. Chem.* 382: 399-406.
4. Cools, J., et al. 2002. Identification of novel fusion partners of ALK, the anaplastic lymphoma kinase, in anaplastic large-cell lymphoma and inflammatory myofibroblastic tumor. *Genes Chromosomes Cancer* 34: 354-362.
5. Rush, J., et al. 2005. Immunoaffinity profiling of tyrosine phosphorylation in cancer cells. *Nat. Biotechnol.* 23: 94-101.
6. Evilia, C., et al. 2006. Acquisition of an insertion peptide for efficient aminoacylation by a halophile tRNA synthetase. *Biochemistry* 45: 6835-6845.
7. Hohn, M.J., et al. 2006. Emergence of the universal genetic code imprinted in an RNA record. *Proc. Natl. Acad. Sci. USA* 103: 18095-18100.

CHROMOSOMAL LOCATION

Genetic locus: CARS (human) mapping to 11p15.4.

SOURCE

Cytoplasmic CysRS (H-25) is an affinity purified rabbit polyclonal antibody raised against synthetic Cytoplasmic CysRS peptide of human origin.

PRODUCT

Each vial contains 50 µg IgG in 500 µl PBS with < 0.1% sodium azide, 0.1% gelatin and < 0.02% sucrose.

STORAGE

Store at 4° C, ****DO NOT FREEZE****. Stable for one year from the date of shipment. Non-hazardous. No MSDS required.

RESEARCH USE

For research use only, not for use in diagnostic procedures.

APPLICATIONS

Cytoplasmic CysRS (H-25) is recommended for detection of Cytoplasmic CysRS of human origin by Western Blotting (starting dilution 1:200, dilution range 1:100-1:1000), immunoprecipitation [1-2 µg per 100-500 µg of total protein (1 ml of cell lysate)], immunofluorescence (starting dilution 1:50, dilution range 1:50-1:500), immunohistochemistry (including paraffin-embedded sections) (starting dilution 1:50, dilution range 1:50-1:500) and solid phase ELISA (starting dilution 1:30, dilution range 1:30-1:3000).

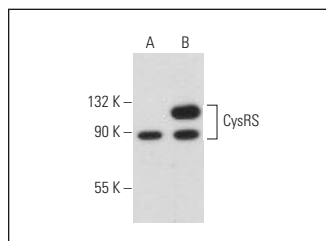
Suitable for use as control antibody for Cytoplasmic CysRS siRNA (h): sc-77084, Cytoplasmic CysRS shRNA Plasmid (h): sc-77084-SH and Cytoplasmic CysRS shRNA (h) Lentiviral Particles: sc-77084-V.

Molecular Weight (predicted) of Cytoplasmic CysRS: 85 kDa.

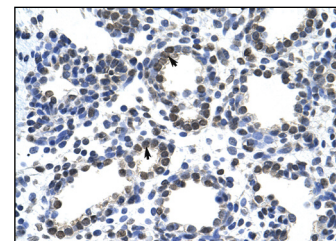
Molecular Weight (observed) of Cytoplasmic CysRS: 109 kDa.

Positive Controls: CysRS (h): 293T Lysate: sc-159661 or HeLa whole cell lysate: sc-2200.

DATA



Cytoplasmic CysRS (H-25): sc-133495. Western blot analysis of CysRS expression in non-transfected: sc-117752 (A) and human CysRS transfected: sc-159661 (B) 293T whole cell lysates.



Cytoplasmic CysRS (H-25): sc-133495. Immunoperoxidase staining of formalin-fixed, paraffin-embedded human lung tissue showing nuclear and cytoplasmic localization.

PROTOCOLS

See our web site at www.scbt.com or our catalog for detailed protocols and support products.

MONOS
Satisfaction
Guaranteed

Try **Cytoplasmic CysRS (A-3): sc-390230**, our highly recommended monoclonal alternative to Cytoplasmic CysRS (H-25).