

## DEPDC7 (L-23): sc-133508

### BACKGROUND

DEPDC7 (DEP domain-containing protein 7), also known as protein TR2/D15, is a 511 amino acid protein belonging to the DEPDC7 family. DEPDC7 contains one DEP domain and is highly expressed in liver, with lower levels in kidney. DEPDC7 exists as two isoforms produced by alternative splicing events. The gene encoding DEPDC7 maps to human chromosome 11p13 and mouse chromosome 2 E2. With approximately 135 million base pairs and 1,400 genes, chromosome 11 makes up around 4% of human genomic DNA and is considered a gene and disease association dense chromosome. Jervell and Lange-Nielsen syndrome, Jacobsen syndrome, Niemann-Pick disease, hereditary angioedema and Smith-Lemli-Opitz syndrome are all associated with defects in chromosome 11.

### REFERENCES

- Gawin, B., Niederführ, A., Schumacher, N., Hummerich, H., Little, P.F. and Gessler, M. 1999. A 7.5 Mb sequence-ready PAC contig and gene expression map of human chromosome 11p13-p14.1. *Genome Res.* 9: 1074-1086.
- Grossfeld, P.D., Mattina, T., Lai, Z., Favier, R., Jones, K.L., Cotter, F. and Jones, C. 2004. The 11q terminal deletion disorder: a prospective study of 110 cases. *Am. J. Med. Genet. A* 129: 51-61.
- Loussouarn, G., Baró, I. and Escande, D. 2006. KCNQ1 K<sup>+</sup> channel-mediated cardiac channelopathies. *Methods Mol. Biol.* 337: 167-183.
- Taylor, T.D., Noguchi, H., Totoki, Y., Toyoda, A., Kuroki, Y., Dewar, K., Lloyd, C., Itoh, T., Takeda, T., Kim, D.W., She, X., Barlow, K.F., Bloom, T., Bruford, E., Chang, J.L., Cuomo, C.A., Eichler, E., Fitzgerald, M.G., Jaffe, D.B., LaButti, K., Nicol, R., Park, H.S., et al. 2006. Human chromosome 11 DNA sequence and analysis including novel gene identification. *Nature* 440: 497-500.
- Zehelein, J., Kathoefer, S., Khalil, M., Alter, M., Thomas, D., Brockmeier, K., Ulmer, H.E., Katus, H.A. and Koenen, M. 2006. Skipping of Exon 1 in the KCNQ1 gene causes Jervell and Lange-Nielsen syndrome. *J. Biol. Chem.* 281: 35397-35403.
- Ataga, K.I., Cappellini, M.D. and Rachmilewitz, E.A. 2007.  $\beta$ -thalassaemia and sickle cell anaemia as paradigms of hypercoagulability. *Br. J. Haematol.* 139: 3-13.
- Berger, A.C., Salazar, G., Styers, M.L., Newell-Litwa, K.A., Werner, E., Maue, R.A., Corbett, A.H. and Faundez, V. 2007. The subcellular localization of the Niemann-Pick Type C proteins depends on the adaptor complex AP-3. *J. Cell Sci.* 120: 3640-3652.
- Lee, J.H. and Paull, T.T. 2007. Activation and regulation of ATM kinase activity in response to DNA double-strand breaks. *Oncogene* 26: 7741-7748.

### CHROMOSOMAL LOCATION

Genetic locus: DEPDC7 (human) mapping to 11p13.

### SOURCE

DEPDC7 (L-23) is an affinity purified rabbit polyclonal antibody raised against synthetic DEPDC7 peptide of human origin.

### PRODUCT

Each vial contains 50  $\mu$ g IgG in 500  $\mu$ l PBS with < 0.1% sodium azide, 0.1% gelatin and < 0.02% sucrose.

### APPLICATIONS

DEPDC7 (L-23) is recommended for detection of DEPDC7 of human origin by Western Blotting (starting dilution 1:200, dilution range 1:100-1:1000), immunoprecipitation [1-2  $\mu$ g per 100-500  $\mu$ g of total protein (1 ml of cell lysate)] and solid phase ELISA (starting dilution 1:30, dilution range 1:30-1:3000).

Suitable for use as control antibody for DEPDC7 siRNA (h): sc-96354, DEPDC7 shRNA Plasmid (h): sc-96354-SH and DEPDC7 shRNA (h) Lentiviral Particles: sc-96354-V.

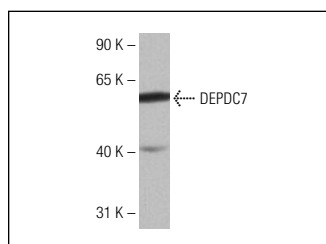
Molecular Weight of DEPDC7 isoforms: 58/61 kDa.

Positive Controls: Human fetal brain tissue extract.

### RECOMMENDED SECONDARY REAGENTS

To ensure optimal results, the following support (secondary) reagents are recommended: 1) Western Blotting: use goat anti-rabbit IgG-HRP: sc-2004 (dilution range: 1:2000-1:100,000) or Cruz Marker<sup>™</sup> compatible goat anti-rabbit IgG-HRP: sc-2030 (dilution range: 1:2000-1:5000), Cruz Marker<sup>™</sup> Molecular Weight Standards: sc-2035, TBS Blotto A Blocking Reagent: sc-2333 and Western Blotting Luminol Reagent: sc-2048. 2) Immunoprecipitation: use Protein A/G PLUS-Agarose: sc-2003 (0.5 ml agarose/2.0 ml).

### DATA



DEPDC7 (L-23): sc-133508. Western blot analysis of DEPDC7 expression in human fetal brain tissue extract.

### STORAGE

Store at 4° C, **\*\*DO NOT FREEZE\*\***. Stable for one year from the date of shipment. Non-hazardous. No MSDS required.

### RESEARCH USE

For research use only, not for use in diagnostic procedures.

### PROTOCOLS

See our web site at [www.scbt.com](http://www.scbt.com) or our catalog for detailed protocols and support products.