

EBP1 (T-21): sc-133531

BACKGROUND

EBP1 (ErbB-3-binding protein 1), also known as PA2G4 (proliferation-associated 2G4), p38-2G4 or HG4-1, is a member of the peptidase M24C family and functions as an RNA-binding protein involved in cellular proliferation and differentiation processes. It is expressed in a variety of cell lines, including a wide range of tumor cell lines, and localizes to the cytoplasm. Upon treatment with Neuregulin-1 (heregulin), EBP1 translocates to the nucleus. EBP1 is a component of pre-ribosomal ribonucleoprotein complexes, participating in ribosome assembly and regulating the later steps of rRNA processing. In addition, EBP1 interacts with ErbB-3 and may function as a modulator of the ErbB-3-mediated signal transduction pathway by regulating the effects of Neuregulin-1. EBP1 also associates with histone deacetylases (HDACs), functioning as a transcriptional corepressor of cell cycle regulatory genes.

REFERENCES

- Zhang, Y., et al. 2005. The ErbB3 binding protein EBP1 interacts with Sin3A to repress E2F1 and AR-mediated transcription. *Nucleic Acids Res.* 33: 6024-6033.
- Squatrito, M., et al. 2006. EBP1 is a δ sRNA-binding protein associated with ribosomes that modulates eIF2 α phosphorylation. *Biochem. Biophys. Res. Commun.* 344: 859-868.
- Bose, S.K., et al. 2006. Identification of EBP1 as a component of cytoplasmic Bcl-2 mRNP (messenger ribonucleoprotein particle) complexes. *Biochem. J.* 396: 99-107.
- Akinmade, D., et al. 2007. EBP1-mediated inhibition of cell growth requires serine 363 phosphorylation. *Int. J. Oncol.* 31: 851-858.
- Kowalinski, E., et al. 2007. Expression, purification, crystallization and preliminary crystallographic analysis of the proliferation-associated protein EBP1. *Acta Crystallogr. Sect. F Struct. Biol. Cryst. Commun.* 63: 768-770.
- Kowalinski, E., et al. 2007. The crystal structure of EBP1 reveals a methionine aminopeptidase fold as binding platform for multiple interactions. *FEBS Lett.* 581: 4450-4454.
- Santegoets, S.J., et al. 2007. Identification and characterization of ErbB-3-binding protein-1 as a target for immunotherapy. *J. Immunol.* 179: 2005-2012.

CHROMOSOMAL LOCATION

Genetic locus: PA2G4 (human) mapping to 12q13.2; Pa2g4 (mouse) mapping to 10 D3.

SOURCE

EBP1 (T-21) is a Protein A purified rabbit polyclonal antibody raised against synthetic EBP1 peptide of human origin.

PRODUCT

Each vial contains 100 μ g IgG in 1.0 ml PBS with < 0.1% sodium azide, 0.1% gelatin and < 0.02% sucrose.

APPLICATIONS

EBP1 (T-21) is recommended for detection of EBP1 of mouse, rat, human and zebrafish origin by Western Blotting (starting dilution 1:200, dilution range 1:100-1:1000), immunoprecipitation [1-2 μ g per 100-500 μ g of total protein (1 ml of cell lysate)] and solid phase ELISA (starting dilution 1:30, dilution range 1:30-1:3000).

Suitable for use as control antibody for EBP1 siRNA (h): sc-77220, EBP1 siRNA (m): sc-77221, EBP1 shRNA Plasmid (h): sc-77220-SH, EBP1 shRNA Plasmid (m): sc-77221-SH, EBP1 shRNA (h) Lentiviral Particles: sc-77220-V and EBP1 shRNA (m) Lentiviral Particles: sc-77221-V.

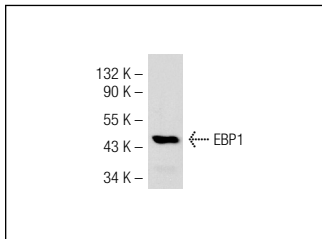
Molecular Weight of EBP1: 47 kDa.

Positive Controls: HeLa whole cell lysate: sc-2200 or Hep G2 cell lysate: sc-2227.

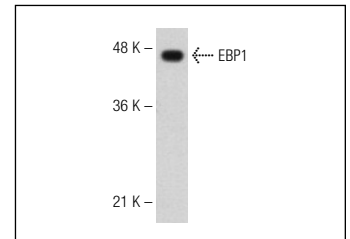
RECOMMENDED SECONDARY REAGENTS

To ensure optimal results, the following support (secondary) reagents are recommended: 1) Western Blotting: use goat anti-rabbit IgG-HRP: sc-2004 (dilution range: 1:2000-1:100,000) or Cruz Marker™ compatible goat anti-rabbit IgG-HRP: sc-2030 (dilution range: 1:2000-1:5000), Cruz Marker™ Molecular Weight Standards: sc-2035, TBS Blotto A Blocking Reagent: sc-2333 and Western Blotting Luminol Reagent: sc-2048. 2) Immunoprecipitation: use Protein A/G PLUS-Agarose: sc-2003 (0.5 ml agarose/2.0 ml).

DATA



EBP1 (T-21): sc-133531. Western blot analysis of EBP1 expression in HeLa whole cell lysate.



EBP1 (T-21): sc-133531. Western blot analysis of EBP1 expression in Hep G2 whole cell lysate.

STORAGE

Store at 4° C, **DO NOT FREEZE**. Stable for one year from the date of shipment. Non-hazardous. No MSDS required.

RESEARCH USE

For research use only, not for use in diagnostic procedures.



Try **EBP1 (C-11): sc-393114**, our highly recommended monoclonal alternative to EBP1 (T-21).