

# ECHDC3 (T-23): sc-133533

## BACKGROUND

ECHDC3 (enoyl coenzyme A hydratase domain containing 3), also known as PP1494 or PP8332, is a 303 amino acid mitochondrial protein that is expressed as 2 alternatively spliced isoforms and is encoded by a gene which maps to human chromosome 10. Spanning nearly 135 million base pairs, chromosome 10 makes up approximately 4.5% of the total DNA in cells and encodes nearly 1,200 genes. Several protein-coding genes, including those that encode for chemokines, cadherins, excision repair proteins, early growth response factors (Egrs) and fibroblast growth receptors (FGFRs), are located on chromosome 10. Defects in some of the genes that map to chromosome 10 are associated with Charcot-Marie-Tooth disease, Jackson-Weiss syndrome, Usher syndrome, nonsyndromic deafness, Wolman's syndrome, Cowden syndrome, multiple endocrine neoplasia type 2 and porphyria.

## REFERENCES

- Jabs, E.W., et al. 1994. Jackson-Weiss and Crouzon syndromes are allelic with mutations in fibroblast growth factor receptor 2. *Nat. Genet.* 8: 275-279.
- Deloukas, P., et al. 2000. Report of the third international workshop on human chromosome 10 mapping and sequencing 1999. *Cytogenet. Cell Genet.* 90: 1-12.
- Gilbert, F. 2001. Chromosome 10. *Genet. Test.* 5: 69-82.
- Berger, P., et al. 2002. Molecular cell biology of Charcot-Marie-Tooth disease. *Neurogenetics* 4: 1-15.
- Nonneman, D., et al. 2004. Comparative mapping of human chromosome 10 to pig chromosomes 10 and 14. *Anim. Genet.* 35: 338-343.
- Deloukas, P., et al. 2004. The DNA sequence and comparative analysis of human chromosome 10. *Nature* 429: 375-381.
- Suzuki, Y., et al. 2004. Sequence comparison of human and mouse genes reveals a homologous block structure in the promoter regions. *Genome Res.* 14: 1711-1718.
- Chen, L. and Deng, C.X. 2005. Roles of FGF signaling in skeletal development and human genetic diseases. *Front. Biosci.* 10: 1961-1976.
- Cho, M.Y., et al. 2008. First report of ovarian dysgerminoma in Cowden syndrome with germline PTEN mutation and PTEN-related 10q loss of tumor heterozygosity. *Am. J. Surg. Pathol.* 32: 1258-1264.

## CHROMOSOMAL LOCATION

Genetic locus: ECHDC3 (human) mapping to 10p14; Echdc3 (mouse) mapping to 2 A1.

## SOURCE

ECHDC3 (T-23) is a Protein A purified rabbit polyclonal antibody raised against synthetic ECHDC3 peptide of human origin.

## PRODUCT

Each vial contains 100 µg IgG in 1.0 ml PBS with < 0.1% sodium azide, 0.1% gelatin and < 0.02% sucrose.

## APPLICATIONS

ECHDC3 (T-23) is recommended for detection of ECHDC3 of mouse, rat and human origin by Western Blotting (starting dilution 1:200, dilution range 1:100-1:1000), immunoprecipitation [1-2 µg per 100-500 µg of total protein (1 ml of cell lysate)] and solid phase ELISA (starting dilution 1:30, dilution range 1:30-1:3000).

Suitable for use as control antibody for ECHDC3 siRNA (h): sc-90758, ECHDC3 siRNA (m): sc-143285, ECHDC3 shRNA Plasmid (h): sc-90758-SH, ECHDC3 shRNA Plasmid (m): sc-143285-SH, ECHDC3 shRNA (h) Lentiviral Particles: sc-90758-V and ECHDC3 shRNA (m) Lentiviral Particles: sc-143285-V.

Molecular Weight (predicted) of ECHDC3: 30 kDa.

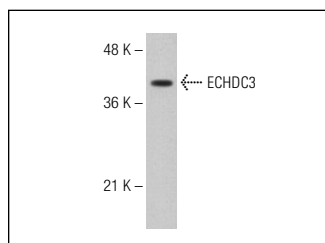
Molecular Weight (observed) of ECHDC3: 39 kDa.

Positive Controls: Hep G2 cell lysate: sc-2227.

## RECOMMENDED SECONDARY REAGENTS

To ensure optimal results, the following support (secondary) reagents are recommended: 1) Western blotting: use goat anti-rabbit IgG-HRP: sc-2004 (dilution range: 1:2000-1:100,000) or Cruz Marker™ compatible goat anti-rabbit IgG-HRP: sc-2030 (dilution range: 1:2000-1:5000), Cruz Marker™ Molecular Weight Standards: sc-2035, TBS Blotto A Blocking Reagent: sc-2333 and Western Blotting Luminol Reagent: sc-2048. 2) Immunoprecipitation: use Protein A/G PLUS-Agarose: sc-2003 (0.5 ml agarose/2.0 ml).

## DATA



ECHDC3 (T-23): sc-133533. Western blot analysis of ECHDC3 expression in Hep G2 whole cell lysate.

## STORAGE

Store at 4° C, **\*\*DO NOT FREEZE\*\***. Stable for one year from the date of shipment. Non-hazardous. No MSDS required.

## RESEARCH USE

For research use only, not for use in diagnostic procedures.

## PROTOCOLS

See our web site at [www.scbt.com](http://www.scbt.com) or our catalog for detailed protocols and support products.