

ERR γ (Z-21): sc-133561

BACKGROUND

Estrogen and progesterone receptors are members of a family of transcription factors that are regulated by the binding of their cognate ligands. The interaction of hormone-bound estrogen receptors with estrogen responsive elements (EREs) alters transcription of ERE-containing genes. Estrogen receptor-related proteins, (ERR α , β and γ), are orphan nuclear receptors. Like estrogen receptors, ERRs bind specifically to EREs to activate reporter genes. EREs are constitutively active without binding to estrogen. The biological response to progesterone is mediated by two distinct forms of the human progesterone receptor (PR-A and PR-B), which arise from alternative splicing. In most cells, PR-B functions as a transcriptional activator of progesterone-responsive genes, whereas PR-A functions as a transcriptional inhibitor of all steroid hormone receptors. mPR is a membrane progesterin receptor. The predicted 436-amino acid ERR γ protein which presumably localizes to the nucleus, is expressed in the heart, kidney, brain, lung, bone marrow, adrenal gland, trachea, spinal cord and thyroid gland tissues.

CHROMOSOMAL LOCATION

Genetic locus: ESRRG (human) mapping to 1q41; Esrrg (mouse) mapping to 1 H6.

SOURCE

ERR γ (Z-21) is a Protein A purified rabbit polyclonal antibody raised against synthetic ERR γ peptide of human origin.

PRODUCT

Each vial contains 100 μ g IgG in 1.0 ml PBS with < 0.1% sodium azide, 0.1% gelatin and < 0.02% sucrose.

STORAGE

Store at 4° C, ****DO NOT FREEZE****. Stable for one year from the date of shipment. Non-hazardous. No MSDS required.

APPLICATIONS

ERR γ (Z-21) is recommended for detection of ERR γ of mouse, rat, human, zebrafish, canine and zebrafish origin by Western Blotting (starting dilution 1:200, dilution range 1:100-1:1000), immunoprecipitation [1-2 μ g per 100-500 μ g of total protein (1 ml of cell lysate)], immunofluorescence (starting dilution 1:50, dilution range 1:50-1:500), immunohistochemistry (including paraffin-embedded sections) (starting dilution 1:50, dilution range 1:50-1:500) and solid phase ELISA (starting dilution 1:30, dilution range 1:30-1:3000).

Suitable for use as control antibody for ERR γ siRNA (h): sc-44704, ERR γ siRNA (m): sc-44705, ERR γ shRNA Plasmid (h): sc-44704-SH, ERR γ shRNA Plasmid (m): sc-44705-SH, ERR γ shRNA (h) Lentiviral Particles: sc-44704-V and ERR γ shRNA (m) Lentiviral Particles: sc-44705-V.

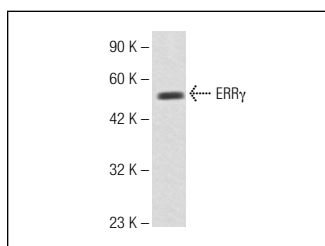
Molecular Weight of ERR γ isoforms: 51/49 kDa.

Positive Controls: Jurkat whole cell lysate: sc-2204.

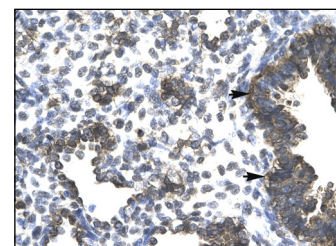
RECOMMENDED SECONDARY REAGENTS

To ensure optimal results, the following support (secondary) reagents are recommended: 1) Western Blotting: use goat anti-rabbit IgG-HRP: sc-2004 (dilution range: 1:2000-1:100,000) or Cruz Marker™ compatible goat anti-rabbit IgG-HRP: sc-2030 (dilution range: 1:2000-1:5000), Cruz Marker™ Molecular Weight Standards: sc-2035, TBS Blotto A Blocking Reagent: sc-2333 and Western Blotting Luminol Reagent: sc-2048. 2) Immunoprecipitation: use Protein A/G PLUS-Agarose: sc-2003 (0.5 ml agarose/2.0 ml). 3) Immunofluorescence: use goat anti-rabbit IgG-FITC: sc-2012 (dilution range: 1:100-1:400) or goat anti-rabbit IgG-TR: sc-2780 (dilution range: 1:100-1:400) with UltraCruz™ Mounting Medium: sc-24941. 4) Immunohistochemistry: use ImmunoCruz™: sc-2051 or ABC: sc-2018 rabbit IgG Staining Systems.

DATA



ERR γ (Z-21): sc-133561. Western blot analysis of ERR γ expression in Jurkat whole cell lysate.



ERR γ (Z-21): sc-133561. Immunoperoxidase staining of formalin-fixed, paraffin-embedded human lung tissue showing cytoplasmic localization.

RESEARCH USE

For research use only, not for use in diagnostic procedures.

PROTOCOLS

See our web site at www.scbt.com or our catalog for detailed protocols and support products.

MONOS
Satisfaction
Guaranteed

Try **ERR γ (D-1): sc-393969**, our highly recommended monoclonal alternative to ERR γ (Z-21).