

# FBXO25 (D-22): sc-133577

## BACKGROUND

FBXO25 (F-box only protein 25), also known as FBX25, is a 367 amino acid protein that contains one C-terminal F-box domain and belongs to the FBX class of the F-box family of proteins. F-box proteins are critical components of the SCF (Skp1-CUL-1-F-box protein) type E3 ubiquitin ligase complex and are involved in substrate recognition and recruitment for ubiquitination. They are members of a larger family of proteins that are involved in the regulation of a wide variety of cellular processes (including the cell cycle, immune response, signaling cascades and developmental processes) through the targeting of proteins, such as cyclins, cyclin-dependent kinase inhibitors, I $\kappa$ B- $\alpha$  and  $\beta$ -catenin, for degradation by the proteasome after ubiquitination. Expressed at high levels in brain, FBXO25 localizes predominantly to the nucleus and directly interacts with Skp1 p19 and CUL-1. Disruption of the gene encoding FBXO25 can lead to X-linked mental retardation.

## REFERENCES

1. Cenciarelli, C., et al. 1999. Identification of a family of human F-box proteins. *Curr. Biol.* 9: 1177-1179.
2. Winston, J.T., et al. 1999. A family of mammalian F-box proteins. *Curr. Biol.* 9: 1180-1182.

## CHROMOSOMAL LOCATION

Genetic locus: FBXO25 (human) mapping to 8p23.3.

## SOURCE

FBXO25 (D-22) is a Protein A purified rabbit polyclonal antibody raised against synthetic FBXO25 peptide of human origin.

## PRODUCT

Each vial contains 100  $\mu$ g IgG in 1.0 ml PBS with < 0.1% sodium azide, 0.1% gelatin and < 0.02% sucrose.

## RESEARCH USE

For research use only, not for use in diagnostic procedures.

## APPLICATIONS

FBXO25 (D-22) is recommended for detection of FBXO25 of human and zebrafish origin by Western Blotting (starting dilution 1:200, dilution range 1:100-1:1000), immunoprecipitation [1-2  $\mu$ g per 100-500  $\mu$ g of total protein (1 ml of cell lysate)], immunofluorescence (starting dilution 1:50, dilution range 1:50-1:500), immunohistochemistry (including paraffin-embedded sections) (starting dilution 1:50, dilution range 1:50-1:500) and solid phase ELISA (starting dilution 1:30, dilution range 1:30-1:3000).

Suitable for use as control antibody for FBXO25 siRNA (h): sc-77570, FBXO25 shRNA Plasmid (h): sc-77570-SH and FBXO25 shRNA (h) Lentiviral Particles: sc-77570-V.

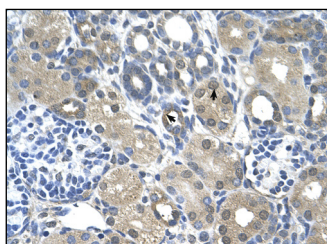
Molecular Weight of FBXO25: 42 kDa.

Positive Controls: Hep G2 whole cell lysate: sc-2227 or COLO 320 HSR whole cell lysate.

## RECOMMENDED SECONDARY REAGENTS

To ensure optimal results, the following support (secondary) reagents are recommended: 1) Western Blotting: use goat anti-rabbit IgG-HRP: sc-2004 (dilution range: 1:2000-1:100,000) or Cruz Marker<sup>™</sup> compatible goat anti-rabbit IgG-HRP: sc-2030 (dilution range: 1:2000-1:5000), Cruz Marker<sup>™</sup> Molecular Weight Standards: sc-2035, TBS Blotto A Blocking Reagent: sc-2333 and Western Blotting Luminol Reagent: sc-2048. 2) Immunoprecipitation: use Protein A/G PLUS-Agarose: sc-2003 (0.5 ml agarose/2.0 ml). 3) Immunofluorescence: use goat anti-rabbit IgG-FITC: sc-2012 (dilution range: 1:100-1:400) or goat anti-rabbit IgG-TR: sc-2780 (dilution range: 1:100-1:400) with UltraCruz<sup>™</sup> Mounting Medium: sc-24941. 4) Immunohistochemistry: use ImmunoCruz<sup>™</sup>: sc-2051 or ABC: sc-2018 rabbit IgG Staining Systems.

## DATA



FBXO25 (D-22): sc-133577. Immunoperoxidase staining of formalin-fixed, paraffin-embedded human kidney tissue showing nuclear and cytoplasmic localization.

## STORAGE

Store at 4° C, **\*\*DO NOT FREEZE\*\***. Stable for one year from the date of shipment. Non-hazardous. No MSDS required.

## PROTOCOLS

See our web site at [www.scbt.com](http://www.scbt.com) or our catalog for detailed protocols and support products.

**MONOS**  
Satisfaction  
Guaranteed

Try **FBXO25 (G-5): sc-390219** or **FBXO25 (F9-3): sc-100735**, our highly recommended monoclonal alternatives to FBXO25 (D-22).