

GBX1 (K-24): sc-133609

BACKGROUND

The homeobox is DNA sequence that is approximately 180 base pairs long that is involved in all steps of the developmental regulation of animals, fungi and plants, from embryogenesis to cell differentiation. The homeobox encodes a protein domain of about 60 amino acids, called the homeodomain, that can bind to DNA. The gastrulation brain homeobox 1 (GBX1) gene, along with another homeobox gene (EN2), maps to chromosome 7q36, and is expressed in septal and pallidal areas and in the basal forebrain cholinergic system, an area implicated in Alzheimer's disease. The GBX1 gene encodes the GBX1 protein, which localizes to the nucleus and contains 1 homeobox DNA-binding domain.

REFERENCES

1. Murtha, M.T., Leckman, J.F. and Ruddle, F.H. 1992. Detection of homeobox genes in development and evolution. *Proc. Natl. Acad. Sci. USA* 88: 10711-10715.
2. Krulmauf, R. 1992. Evolution of the vertebrate Hox homeobox genes. *Bioessays* 14: 245-252.
3. Matsui, T., Hirai, M., Wakita, M., Hirano, M. and Kurosawa, Y. 1993. Expression of a novel human homeobox-containing gene that maps to 7q36.1 in hematopoietic cells. *FEBS Lett.* 322: 181-185.
4. Mark, M., Rijli, F.M. and Chambon, P. 1997. Homeobox genes in embryogenesis and pathogenesis. *Pediatr. Res.* 42: 421-429.
5. Gao, A.C., Lou, W. and Isaacs, J.T. 1998. Downregulation of homeobox gene GBX2 expression inhibits human prostate cancer clonogenic ability and tumorigenicity. *Cancer Res.* 58: 1391-1394.
6. Obinata, A., Akimoto, Y., Omoto, Y. and Hirano, H. 2001. Increase in expression of the homeobox gene, GBX1, in retinol-induced epidermal mucous metaplasia. 280: 1055-1061.
7. Online Mendelian Inheritance in Man, OMIM[™]. 2002. Johns Hopkins University, Baltimore, MD. MIM Number: 603354. World Wide Web URL: <http://www.ncbi.nlm.nih.gov/omim/>

CHROMOSOMAL LOCATION

Genetic locus: GBX1 (human) mapping to 7q36.1; Gbx1 (mouse) mapping to 5 A3.

SOURCE

GBX1 (K-24) is an affinity purified rabbit polyclonal antibody raised against synthetic GBX1 peptide of human origin.

PRODUCT

Each vial contains 50 µg IgG in 500 µl PBS with < 0.1% sodium azide, 0.1% gelatin and < 0.02% sucrose.

STORAGE

Store at 4° C, ****DO NOT FREEZE****. Stable for one year from the date of shipment. Non-hazardous. No MSDS required.

APPLICATIONS

GBX1 (K-24) is recommended for detection of GBX1 of mouse, rat, human and *Drosophila melanogaster* origin by Western Blotting (starting dilution 1:200, dilution range 1:100-1:1000), immunoprecipitation [1-2 µg per 100-500 µg of total protein (1 ml of cell lysate)] and solid phase ELISA (starting dilution 1:30, dilution range 1:30-1:3000).

Suitable for use as control antibody for GBX1 siRNA (h): sc-38663, GBX1 siRNA (m): sc-38664, GBX1 shRNA Plasmid (h): sc-38663-SH, GBX1 shRNA Plasmid (m): sc-38664-SH, GBX1 shRNA (h) Lentiviral Particles: sc-38663-V and GBX1 shRNA (m) Lentiviral Particles: sc-38664-V.

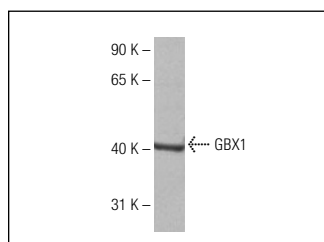
Molecular Weight of GBX1: 38-40 kDa.

Positive Controls: Hep G2 cell lysate: sc-2227.

RECOMMENDED SECONDARY REAGENTS

To ensure optimal results, the following support (secondary) reagents are recommended: 1) Western Blotting: use goat anti-rabbit IgG-HRP: sc-2004 (dilution range: 1:2000-1:100,000) or Cruz Marker[™] compatible goat anti-rabbit IgG-HRP: sc-2030 (dilution range: 1:2000-1:5000), Cruz Marker[™] Molecular Weight Standards: sc-2035, TBS Blotto A Blocking Reagent: sc-2333 and Western Blotting Luminol Reagent: sc-2048. 2) Immunoprecipitation: use Protein A/G PLUS-Agarose: sc-2003 (0.5 ml agarose/2.0 ml).

DATA



GBX1 (K-24): sc-133609. Western blot analysis of GBX1 expression in Hep G2 whole cell lysate.

RESEARCH USE

For research use only, not for use in diagnostic procedures.

PROTOCOLS

See our web site at www.scbt.com or our catalog for detailed protocols and support products.