

GLI-4 (P-24): sc-133624

BACKGROUND

Zinc-finger proteins contain DNA-binding domains and have a wide variety of functions, most of which encompass some form of transcriptional activation or repression. The majority of zinc-finger proteins contain a krueppel-type DNA binding domain and a KRAB domain, which is thought to interact with KAP1, thereby recruiting histone modifying proteins. GLI-4, also known as HKR4, is a 376 amino acid protein that localizes to the nucleus and contains seven C₂H₂-type zinc fingers. Belonging to the krueppel C₂H₂-type zinc-finger protein family, GLI-4 may function as a transcriptional regulator, effectively activating or repressing the transcription of target genes. The gene encoding GLI-4 maps to human chromosome 8, which consists of nearly 146 million base pairs, houses more than 800 genes and is associated with a variety of diseases and malignancies.

REFERENCES

1. Ruppert, J.M., Kinzler, K.W., Wong, A.J., Bigner, S.H., Kao, F.T., Law, M.L., Seuanez, H.N., O'Brien, S.J. and Vogelstein, B. 1988. The GLI-Kruppel family of human genes. *Mol. Cell. Biol.* 8: 3104-3113.
2. Kinzler, K.W., Ruppert, J.M., Bigner, S.H. and Vogelstein, B. 1988. The GLI gene is a member of the Kruppel family of zinc finger proteins. *Nature* 332: 371-374.
3. South, T.L. and Summers, M.F. 1990. Zinc fingers. *Adv. Inorg. Biochem.* 8: 199-248.
4. Kas, K., Wlodarska, I., Meyen, E., Van den Berghe, H. and Van de Ven, W.J. 1996. Assignment of the gene encoding human Kruppel-related zinc finger protein 4 (GLI4) to 8q24.3 by fluorescent *in situ* hybridization. *Cell Genet.* 72: 297-298.
5. Online Mendelian Inheritance in Man, OMIM™. 1997. Johns Hopkins University, Baltimore, MD. MIM Number: 165280. World Wide Web URL: <http://www.ncbi.nlm.nih.gov/omim/>
6. Thomas, J.H. and Emerson, R.O. 2009. Evolution of C₂H₂-zinc finger genes revisited. *BMC Evol. Biol.* 9: 51.

CHROMOSOMAL LOCATION

Genetic locus: GLI4 (human) mapping to 8q24.3.

SOURCE

GLI-4 (P-24) is a Protein A purified rabbit polyclonal antibody raised against synthetic GLI-4 peptide of human origin.

PRODUCT

Each vial contains 100 µg IgG in 1.0 ml PBS with < 0.1% sodium azide, 0.1% gelatin and < 0.02% sucrose.

STORAGE

Store at 4° C, **DO NOT FREEZE**. Stable for one year from the date of shipment. Non-hazardous. No MSDS required.

APPLICATIONS

GLI-4 (P-24) is recommended for detection of GLI-4 of human origin by Western Blotting (starting dilution 1:200, dilution range 1:100-1:1000), immunoprecipitation [1-2 µg per 100-500 µg of total protein (1 ml of cell lysate)] and solid phase ELISA (starting dilution 1:30, dilution range 1:30-1:3000).

Suitable for use as control antibody for GLI-4 siRNA (h): sc-75140, GLI-4 shRNA Plasmid (h): sc-75140-SH and GLI-4 shRNA (h) Lentiviral Particles: sc-75140-V.

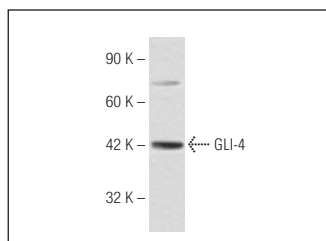
Molecular Weight of GLI-4: 41 kDa.

Positive Controls: Jurkat whole cell lysate: sc-2204.

RECOMMENDED SECONDARY REAGENTS

To ensure optimal results, the following support (secondary) reagents are recommended: 1) Western Blotting: use goat anti-rabbit IgG-HRP: sc-2004 (dilution range: 1:2000-1:100,000) or Cruz Marker™ compatible goat anti-rabbit IgG-HRP: sc-2030 (dilution range: 1:2000-1:5000), Cruz Marker™ Molecular Weight Standards: sc-2035, TBS Blotto A Blocking Reagent: sc-2333 and Western Blotting Luminol Reagent: sc-2048. 2) Immunoprecipitation: use Protein A/G PLUS-Agarose: sc-2003 (0.5 ml agarose/2.0 ml).

DATA



GLI-4 (P-24): sc-133624. Western blot analysis of GLI-4 expression in Jurkat whole cell lysate.

RESEARCH USE

For research use only, not for use in diagnostic procedures.

PROTOCOLS

See our web site at www.scbt.com or our catalog for detailed protocols and support products.