

GRSF-1 (T-23): sc-133638

BACKGROUND

GRSF-1 (G-rich RNA sequence binding factor 1) is a 480 amino acid cytoplasmic protein that contains three RRM (RNA recognition motif) domains and two auxiliary domains. Considered a cellular protein, GRSF-1 binds to RNAs containing the G-rich element. It is suggested that GRSF-1 selectively recruits cellular and viral mRNAs containing 5' UTR GRSF-1 binding sites to polyribosomes, which is mediated through interactions with cellular proteins. GRSF-1 is encoded by a gene located on human chromosome 4, which encodes nearly 6% of the human genome and has the largest gene deserts (regions of the genome with no protein encoding genes) of all of the human chromosomes. Defects in some of the genes located on chromosome 4 are associated with Huntington's disease, Ellis-van Creveld syndrome, methylmalonic acidemia and polycystic kidney disease.

REFERENCES

1. Qian, Z. and Wilusz, J. 1994. GRSF-1: a poly(A)⁺ mRNA binding protein which interacts with a conserved G-rich element. *Nucleic Acids Res.* 22: 2334-2343.
2. Chen, C.S., Bejcek, B.E. and Kersey, J.H. 1995. A mapping study of 13 genes on human chromosome bands 4q11 → q25. *Cytogenet. Cell Genet.* 69: 260-265.
3. Park, Y.W., Wilusz, J. and Katze, M.G. 1999. Regulation of eukaryotic protein synthesis: selective influenza viral mRNA translation is mediated by the cellular RNA-binding protein GRSF-1. *Proc. Natl. Acad. Sci. USA* 96: 6694-6699.
4. Kash, J.C., Cunningham, D.M., Smit, M.W., Park, Y., Fritz, D., Wilusz, J. and Katze, M.G. 2002. Selective translation of eukaryotic mRNAs: functional molecular analysis of GRSF-1, a positive regulator of influenza virus protein synthesis. *J. Virol.* 76: 10417-10426.
5. Hillier, L.W., et. al. 2005. Generation and annotation of the DNA sequences of human chromosomes 2 and 4. *Nature* 434: 724-731.
6. Schaub, M.C., Lopez, S.R. and Caputi, M. 2007. Members of the heterogeneous nuclear ribonucleoprotein H family activate splicing of an HIV-1 splicing substrate by promoting formation of ATP-dependent spliceosomal complexes. *J. Biol. Chem.* 282: 13617-13626.
7. Cobbold, L.C., Spriggs, K.A., Haines, S.J., Dobbyn, H.C., Hayes, C., de Moor, C.H., Lilley, K.S., Bushell, M. and Willis, A.E. 2008. Identification of internal ribosome entry segment (IRES)-transacting factors for the Myc family of IRESs. *Mol. Cell. Biol.* 28: 40-49.

CHROMOSOMAL LOCATION

Genetic locus: GRSF1 (human) mapping to 4q13.3.

STORAGE

Store at 4° C, ****DO NOT FREEZE****. Stable for one year from the date of shipment. Non-hazardous. No MSDS required.

RESEARCH USE

For research use only, not for use in diagnostic procedures.

SOURCE

GRSF-1 (T-23) is a Protein A purified rabbit polyclonal antibody raised against synthetic GRSF-1 peptide of human origin.

PRODUCT

Each vial contains 100 µg IgG in 1.0 ml PBS with < 0.1% sodium azide, 0.1% gelatin and < 0.02% sucrose.

APPLICATIONS

GRSF-1 (T-23) is recommended for detection of GRSF-1 of human origin by Western Blotting (starting dilution 1:200, dilution range 1:100-1:1000), immunoprecipitation [1-2 µg per 100-500 µg of total protein (1 ml of cell lysate)] and solid phase ELISA (starting dilution 1:30, dilution range 1:30-1:3000).

Suitable for use as control antibody for GRSF-1 siRNA (h): sc-75202, GRSF-1 shRNA Plasmid (h): sc-75202-SH and GRSF-1 shRNA (h) Lentiviral Particles: sc-75202-V.

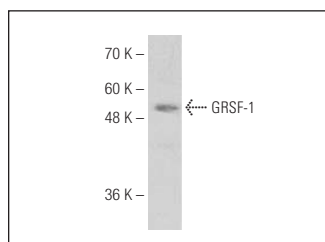
Molecular Weight of GRSF-1: 53 kDa.

Positive Controls: Hep G2 cell lysate: sc-2227.

RECOMMENDED SECONDARY REAGENTS

To ensure optimal results, the following support (secondary) reagents are recommended: 1) Western Blotting: use goat anti-rabbit IgG-HRP: sc-2004 (dilution range: 1:2000-1:100,000) or Cruz Marker™ compatible goat anti-rabbit IgG-HRP: sc-2030 (dilution range: 1:2000-1:5000), Cruz Marker™ Molecular Weight Standards: sc-2035, TBS Blotto A Blocking Reagent: sc-2333 and Western Blotting Luminol Reagent: sc-2048. 2) Immunoprecipitation: use Protein A/G PLUS-Agarose: sc-2003 (0.5 ml agarose/2.0 ml).

DATA



GRSF-1 (T-23): sc-133638. Western blot analysis of GRSF-1 expression in Hep G2 whole cell lysate.

PROTOCOLS

See our web site at www.scbt.com or our catalog for detailed protocols and support products.