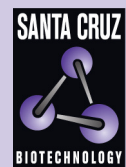


GSC2 (T-24): sc-133639



The Power to Question

BACKGROUND

GSC2 (homeobox protein goosecoid-2), also known as GSCL (homeobox protein goosecoid-like), is a 205 amino acid nuclear protein that shares high homology to GSC, a protein involved in the development of the lower mandible and its associated musculature as well as components of the inner ear and the external auditory meatus. Since its expression pattern begins in early embryo, GSC2 may play an indirect role in the development of neural crest-derived structures. Due to its chromosomal location and its role in early development, the gene encoding GSC2 is a major candidate for del22q11.2 (DiGeorge or velocardiofacial) syndrome, a disease characterized by craniofacial defects, thymic hypoplasia, cardiovascular anomalies, velopharyngeal insufficiency and skeletal muscle hypotonia.

REFERENCES

- Gottlieb, S., Emanuel, B.S., Driscoll, D.A., Sellinger, B., Wang, Z., Roe, B. and Budarf, M.L. 1997. The DiGeorge syndrome minimal critical region contains a goosecoid-like (GSCL) homeobox gene that is expressed early in human development. *Am. J. Hum. Genet.* 60: 1194-1201.
- Funke, B., Saint-Jore, B., Puech, A., Sirotkin, H., Edelmann, L., Carlson, C., Raft, S., Pandita, R.K., Kucherlapati, R., Skoultchi, A. and Morrow, B.E. 1997. Characterization and mutation analysis of goosecoid-like (GSCL), a homeodomain-containing gene that maps to the critical region for VCFs/DGS on 22q11. *Genomics* 46: 364-372.
- Gottlieb, S., Hanes, S.D., Golden, J.A., Oakey, R.J. and Budarf, M.L. 1998. Goosecoid-like, a gene deleted in DiGeorge and velocardiofacial syndromes, recognizes DNA with a bicoid-like specificity and is expressed in the developing mouse brain. *Hum. Mol. Genet.* 7: 1497-1505.
- Wakamiya, M., Lindsay, E.A., Rivera-Pérez, J.A., Baldini, A. and Behringer, R.R. 1998. Functional analysis of Gscl in the pathogenesis of the DiGeorge and velocardiofacial syndromes. *Hum. Mol. Genet.* 7: 1835-1840.
- Saint-Jore, B., Puech, A., Heyer, J., Lin, Q., Raine, C., Kucherlapati, R. and Skoultchi, A.I. 1998. Goosecoid-like (Gscl), a candidate gene for velocardiofacial syndrome, is not essential for normal mouse development. *Hum. Mol. Genet.* 7: 1841-1849.
- Online Mendelian Inheritance in Man, OMIM™. 2004. Johns Hopkins University, Baltimore, MD. MIM Number: 601845. World Wide Web URL: <http://www.ncbi.nlm.nih.gov/omim/>
- Wada, K., Maruno, M., Suzuki, T., Kagawa, N., Hashiba, T., Fujimoto, Y., Hashimoto, N., Izumoto, S. and Yoshimine, T. 2005. Chromosomal and genetic abnormalities in benign and malignant meningiomas using DNA microarray. *Neurol. Res.* 27: 747-754.
- Long, J.M., LaPorte, P., Merscher, S., Funke, B., Saint-Jore, B., Puech, A., Kucherlapati, R., Morrow, B.E., Skoultchi, A.I. and Wynshaw-Boris, A. 2006. Behavior of mice with mutations in the conserved region deleted in velocardiofacial/DiGeorge syndrome. *Neurogenetics* 7: 247-257.

STORAGE

Store at 4° C, ****DO NOT FREEZE****. Stable for one year from the date of shipment. Non-hazardous. No MSDS required.

CHROMOSOMAL LOCATION

Genetic locus: GSC2 (human) mapping to 22q11.21.

SOURCE

GSC2 (T-24) is a protein A purified rabbit polyclonal antibody raised against a synthetic GSC2 peptide of human origin.

PRODUCT

Each vial contains 100 µg IgG in 1.0 ml PBS with < 0.1% sodium azide, 0.1% gelatin and < 0.02% sucrose.

APPLICATIONS

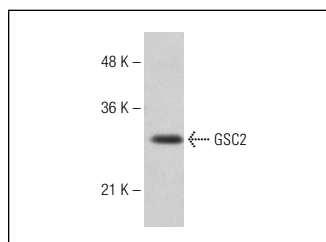
GSC2 (T-24) is recommended for detection of GSC2 of human origin by Western Blotting (starting dilution 1:200, dilution range 1:100-1:1000), immunoprecipitation [1-2 µg per 100-500 µg of total protein (1 ml of cell lysate)], immunofluorescence (starting dilution 1:50, dilution range 1:50-1:500), immunohistochemistry (including paraffin-embedded sections) (starting dilution 1:50, dilution range 1:50-1:500) and solid phase ELISA (starting dilution 1:30, dilution range 1:30-1:3000).

Suitable for use as control antibody for GSC2 siRNA (h): sc-105420, GSC2 shRNA Plasmid (h): sc-105420-SH and GSC2 shRNA (h) Lentiviral Particles: sc-105420-V.

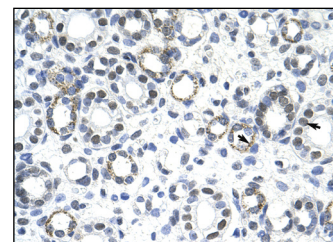
Molecular Weight of GSC2: 22 kDa.

Positive Controls: Hep G2 cell lysate: sc-2227 or human kidney tissue.

DATA



GSC2 (T-24): sc-133639. Western blot analysis of GSC2 expression in Hep G2 whole cell lysate.



GSC2 (T-24): sc-133639. Immunoperoxidase staining of formalin-fixed, paraffin-embedded human kidney tissue showing nuclear localization.

RESEARCH USE

For research use only, not for use in diagnostic procedures.

PROTOCOLS

See our web site at www.scbt.com or our catalog for detailed protocols and support products.