



# Krox-26 (K-25): sc-133715

## BACKGROUND

Krox-26, also known as ZNF22 (zinc-finger protein 22), HKR-T1 or ZNF422, is a 224 amino acid protein that localizes to the nucleus and contains five CDH2-type zinc fingers. One of several members of the Krüppel C<sub>2</sub>H<sub>2</sub>-type zinc-finger protein family, Krox-26 binds to DNA and is thought to be involved in transcriptional regulation events related to tooth formation, both in embryonic and adult tissue. The gene encoding Krox-26 maps to human chromosome 10, which houses over 1,200 genes and comprises nearly 4.5% of the human genome. Defects in some of the genes that map to chromosome 10 are associated with Charcot-Marie Tooth disease, Jackson-Weiss syndrome, Usher syndrome, nonsyndromic deafness, Wolman's syndrome, Cowden syndrome, multiple endocrine neoplasia type 2 and porphyria.

## REFERENCES

- Thiesen, H.J. 1990. Multiple genes encoding zinc-finger domains are expressed in human T cells. *New Biol.* 2: 363-374.
- Bray, P., Lichter, P., Thiesen, H.J., Ward, D.C. and Dawid, I.B. 1991. Characterization and mapping of human genes encoding zinc-finger proteins. *Proc. Natl. Acad. Sci. USA* 88: 9563-9567.
- Wu, B.Y., Hanley, E.W., Turka, L.A. and Nabel, G.J. 1992. Isolation of a cDNA clone encoding a zinc-finger protein highly expressed in T-leukemia lines. *Blood* 80: 2571-2576.
- Rousseau-Merck, M.F., Tunnacliffe, A., Berger, R., Ponder, B.A. and Thiesen, H.J. 1992. A cluster of expressed zinc-finger protein genes in the pericentromeric region of human chromosome 10. *Genomics* 13: 845-848.
- Lichter, P., Bray, P., Ried, T., Dawid, I.B. and Ward, D.C. 1992. Clustering of C<sub>2</sub>H<sub>2</sub> zinc-finger motif sequences within telomeric and fragile site regions of human chromosomes. *Genomics* 13: 999-1007.
- Love, D.R., Gardner, E. and Ponder, B.A. 1993. A polymorphic dinucleotide repeat at the ZNF22 locus. *Hum. Mol. Genet.* 2: 491.
- Online Mendelian Inheritance in Man, OMIM™. 1998. Johns Hopkins University, Baltimore, MD. MIM Number: 194529. World Wide Web URL: <http://www.ncbi.nlm.nih.gov/omim/>
- Gao, Y., Kobayashi, H. and Ganss, B. 2003. The human KROX-26/ZNF22 gene is expressed at sites of tooth formation and maps to the locus for permanent tooth agenesis (He-Zhao deficiency). *J. Dent. Res.* 82: 1002-1007.

## CHROMOSOMAL LOCATION

Genetic locus: ZNF22 (human) mapping to 10q11.21.

## STORAGE

Store at 4° C, \*\*DO NOT FREEZE\*\*. Stable for one year from the date of shipment. Non-hazardous. No MSDS required.

## PROTOCOLS

See our web site at [www.scbt.com](http://www.scbt.com) or our catalog for detailed protocols and support products.

## SOURCE

Krox-26 (K-25) is a Protein A purified rabbit polyclonal antibody raised against synthetic Krox-26 peptide of human origin.

## PRODUCT

Each vial contains 100 µg IgG in 1.0 ml PBS with < 0.1% sodium azide, 0.1% gelatin and < 0.02% sucrose.

## APPLICATIONS

Krox-26 (K-25) is recommended for detection of Krox-26 of human origin by Western Blotting (starting dilution 1:200, dilution range 1:100-1:1000), immunoprecipitation [1-2 µg per 100-500 µg of total protein (1 ml of cell lysate)] and solid phase ELISA (starting dilution 1:30, dilution range 1:30-1:3000).

Suitable for use as control antibody for Krox-26 siRNA (h): sc-62530, Krox-26 shRNA Plasmid (h): sc-62530-SH and Krox-26 shRNA (h) Lentiviral Particles: sc-62530-V.

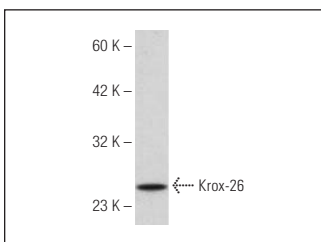
Molecular Weight of Krox-26: 26 kDa.

Positive Controls: Jurkat whole cell lysate: sc-2204.

## RECOMMENDED SECONDARY REAGENTS

To ensure optimal results, the following support (secondary) reagents are recommended: 1) Western Blotting: use goat anti-rabbit IgG-HRP: sc-2004 (dilution range: 1:2000-1:100,000) or Cruz Marker™ compatible goat anti-rabbit IgG-HRP: sc-2030 (dilution range: 1:2000-1:5000), Cruz Marker™ Molecular Weight Standards: sc-2035, TBS Blotto A Blocking Reagent: sc-2333 and Western Blotting Luminol Reagent: sc-2048. 2) Immunoprecipitation: use Protein A/G PLUS-Agarose: sc-2003 (0.5 ml agarose/2.0 ml).

## DATA



Krox-26 (K-25): sc-133715. Western blot analysis of Krox-26 expression in Jurkat whole cell lysate.

## RESEARCH USE

For research use only, not for use in diagnostic procedures.