

L3MBTL2 (L-25): sc-133720

BACKGROUND

Polycomb group (PcG) proteins are important for maintaining the transcriptionally repressed state of target genes and are thought to function via chromatin modification. L3MBTL2 (lethal(3)malignant brain tumor-like 2 protein), also known as L3MBT or H-l(3)mbt-l, is a 705 amino acid member of the PcG family. Localized to the nucleus, L3MBTL2 associates with chromatin-remodeling complexes and helps inhibit the expression of proteins that trigger the cell to enter mitosis. During the G₀ phase of the cell cycle, L3MBTL2 is part of a complex that contains other proteins (such as HP1 γ , E2F-6 and Max) that participate in transcriptional repression. L3MBTL2 contains one FCS-type zinc finger and four MBT repeats and is expressed as three isoforms due to alternative splicing events.

REFERENCES

- Dunham, I., Shimizu, N., Roe, B.A., Chisoso, S., Hunt, A.R., Collins, J.E., Bruskiewich, R., Beare, D.M., Clamp, M., Smink, L.J., Ainscough, R., Almeida, J.P., Babbage, A., Bagguley, C., Bailey, J., Barlow, K., Bates, K.N., Beasley, O., Bird, C.P., Blakey, S., Bridgeman, A.M., Buck, D., Burgess, J., Burrill, W.D. and O'Brien, K.P. 1999. The DNA sequence of human chromosome 22. *Nature* 402: 489-495.
- Wisnar, J. 2001. Molecular characterization of h-l(3)mbt-like: a new member of the human mbt family. *FEBS Lett.* 507: 119-121.
- Ogawa, H., Ishiguro, K., Gaubatz, S., Livingston, D.M. and Nakatani, Y. 2002. A complex with chromatin modifiers that occupies E2F- and Myc-responsive genes in G₀ cells. *Science* 296: 1132-1136.
- Online Mendelian Inheritance in Man, OMIM[™]. 2002. Johns Hopkins University, Baltimore, MD. MIM Number: 611865. World Wide Web URL: <http://www.ncbi.nlm.nih.gov/omim/>
- Markus, J., Feiková, S., Sramko, M., Wolff, L. and Bies, J. 2003. Proliferation-linked expression of the novel murine gene m4mbt encoding a nuclear zinc finger protein with four mbt domains. *Gene* 319: 117-126.
- Li, J., Bench, A.J., Vassiliou, G.S., Fourouclas, N., Ferguson-Smith, A.C. and Green, A.R. 2004. Imprinting of the human L3MBTL gene, a polycomb family member located in a region of chromosome 20 deleted in human myeloid malignancies. *Proc. Natl. Acad. Sci. USA* 101: 7341-7346.

CHROMOSOMAL LOCATION

Genetic locus: L3MBTL2 (human) mapping to 22q13.2.

SOURCE

L3MBTL2 (L-25) is a Protein A purified rabbit polyclonal antibody raised against synthetic L3MBTL2 peptide of human origin.

PRODUCT

Each vial contains 100 μ g IgG in 1.0 ml PBS with < 0.1% sodium azide, 0.1% gelatin and < 0.02% sucrose.

STORAGE

Store at 4° C, ****DO NOT FREEZE****. Stable for one year from the date of shipment. Non-hazardous. No MSDS required.

APPLICATIONS

L3MBTL2 (L-25) is recommended for detection of L3MBTL2 of human origin by Western Blotting (starting dilution 1:200, dilution range 1:100-1:1000), immunoprecipitation [1-2 μ g per 100-500 μ g of total protein (1 ml of cell lysate)] and solid phase ELISA (starting dilution 1:30, dilution range 1:30-1:3000).

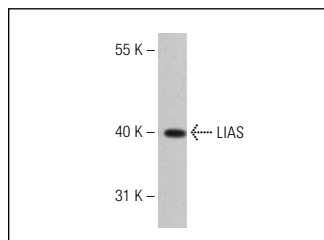
Suitable for use as control antibody for L3MBTL2 siRNA (h): sc-75403, L3MBTL2 shRNA Plasmid (h): sc-75403-SH and L3MBTL2 shRNA (h) Lentiviral Particles: sc-75403-V.

Molecular Weight of L3MBTL2: 79 kDa.

RECOMMENDED SECONDARY REAGENTS

To ensure optimal results, the following support (secondary) reagents are recommended: 1) Western Blotting: use goat anti-rabbit IgG-HRP: sc-2004 (dilution range: 1:2000-1:100,000) or Cruz Marker[™] compatible goat anti-rabbit IgG-HRP: sc-2030 (dilution range: 1:2000-1:5000), Cruz Marker[™] Molecular Weight Standards: sc-2035, TBS Blotto A Blocking Reagent: sc-2333 and Western Blotting Luminol Reagent: sc-2048. 2) Immunoprecipitation: use Protein A/G PLUS-Agarose: sc-2003 (0.5 ml agarose/2.0 ml).

DATA



LIAS (S-24): sc-133739. Western blot analysis of LIAS expression in LN18 whole cell lysate.

RESEARCH USE

For research use only, not for use in diagnostic procedures.

PROTOCOLS

See our web site at www.scbt.com or our catalog for detailed protocols and support products.