

CREBRF (U-22): sc-133747

BACKGROUND

CREBRF, also known as LRF (luman recruitment factor) or C5orf41, is a 639 amino acid nuclear protein that colocalizes with CREB3 in nuclear foci. As a negative regulator of the endoplasmic stress response, which is also known as the UPR (unfolded protein response), CREBRF represses CREB3 transcription. CREBRF is post-translationally phosphorylated as serine 444 and exists as three alternatively spliced isoforms. The gene encoding CREBRF maps to human chromosome 5, which contains 181 million base pairs and comprises nearly 6% of the human genome. Chromosome 5 is associated with Cockayne syndrome through the ERCC8 gene and familial adenomatous polyposis through the adenomatous polyposis coli (APC) tumor suppressor gene. Treacher Collins syndrome is also chromosome 5-associated and is caused by insertions or deletions within the TCOF1 gene. Deletion of the p arm of chromosome 5 leads to Cri du chat syndrome, while deletion of the q arm or of chromosome 5 altogether is common in therapy-related acute myelogenous leukemias and myelodysplastic syndrome.

REFERENCES

- Dixon, M.J., Read, A.P., Donnai, D., Colley, A., Dixon, J. and Williamson, R. 1991. The gene for Treacher Collins syndrome maps to the long arm of chromosome 5. *Am. J. Hum. Genet.* 49: 17-22.
- Saltman, D.L., Dolganov, G.M., Warrington, J.A., Wasmuth, J.J. and Lovett, M. 1993. A physical map of 15 loci on human chromosome 5q23-q33 by two-color fluorescence *in situ* hybridization. *Genomics* 16: 726-732.
- Kadmon, M., Tandara, A. and Herfarth, C. 2001. Duodenal adenomatosis in familial adenomatous polyposis coli. A review of the literature and results from the Heidelberg Polyposis Register. *Int. J. Colorectal Dis.* 16: 63-75.
- South, S.T., Swensen, J.J., Maxwell, T., Rope, A., Brothman, A.R. and Chen, Z. 2006. A new genomic mechanism leading to cri-du-chat syndrome. *Am. J. Med. Genet. A* 140: 2714-2720.
- Aretz, S., Stienen, D., Friedrichs, N., Stemmler, S., Uhlhaas, S., Rahner, N., Propping, P. and Friedl, W. 2007. Somatic APC mosaicism: a frequent cause of familial adenomatous polyposis (FAP). *Hum. Mutat.* 28: 985-992.
- Cleaver, J.E., Hefner, E., Laposa, R.R., Karentz, D. and Marti, T. 2007. Cockayne syndrome exhibits dysregulation of p21 and other gene products that may be independent of transcription-coupled repair. *Neuroscience* 145: 1300-1308.
- Du, H.Y., Idol, R., Robledo, S., Ivanovich, J., An, P., Londono-Vallejo, A., Wilson, D.B., Mason, P.J. and Bessler, M. 2007. Telomerase reverse transcriptase haploinsufficiency and telomere length in individuals with 5p-syndrome. *Aging Cell* 6: 689-697.

CHROMOSOMAL LOCATION

Genetic locus: CREBRF (human) mapping to 5q35.2; A930001N09Rik (mouse) mapping to 17 A3.3.

STORAGE

Store at 4° C, ****DO NOT FREEZE****. Stable for one year from the date of shipment. Non-hazardous. No MSDS required.

SOURCE

CREBRF (U-22) is an affinity purified rabbit polyclonal antibody raised against synthetic CREBRF peptide of human origin.

PRODUCT

Each vial contains 50 µg IgG in 500 µl PBS with < 0.1% sodium azide, 0.1% gelatin and < 0.02% sucrose.

APPLICATIONS

CREBRF (U-22) is recommended for detection of CREBRF of mouse, rat and human origin by Western Blotting (starting dilution 1:200, dilution range 1:100-1:1000) and solid phase ELISA (starting dilution 1:30, dilution range 1:30-1:3000).

Suitable for use as control antibody for CREBRF siRNA (h): sc-91839, CREBRF siRNA (m): sc-140690, CREBRF shRNA Plasmid (h): sc-91839-SH, CREBRF shRNA Plasmid (m): sc-140690-SH, CREBRF shRNA (h) Lentiviral Particles: sc-91839-V and CREBRF shRNA (m) Lentiviral Particles: sc-140690-V.

Molecular Weight of (predicted) CREBRF: 72 kDa.

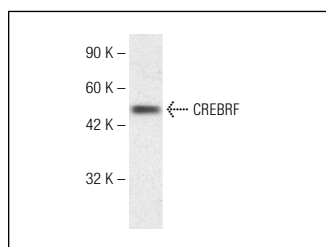
Molecular Weight of (observed) CREBRF: 50 kDa.

Positive Controls: human fetal lung tissue extract.

RECOMMENDED SECONDARY REAGENTS

To ensure optimal results, the following support (secondary) reagents are recommended: 1) Western blotting: use goat anti-rabbit IgG-HRP: sc-2004 (dilution range: 1:2000-1:100,000) or Cruz Marker™ compatible goat anti-rabbit IgG-HRP: sc-2030 (dilution range: 1:2000-1:5000), Cruz Marker™ Molecular Weight Standards: sc-2035, TBS Blotto A Blocking Reagent: sc-2333 and Western Blotting Luminol Reagent: sc-2048.

DATA



CREBRF (U-22): sc-133747. Western blot analysis of CREBRF expression in human fetal lung tissue extract.

RESEARCH USE

For research use only, not for use in diagnostic procedures.

PROTOCOLS

See our web site at www.scbt.com or our catalog for detailed protocols and support products.