

LOC653135 (V-23): sc-133753

BACKGROUND

The gene encoding human LOC653135 maps to chromosome 22, which houses over 500 genes and is the second smallest human chromosome. Mutations in several of the genes that map to chromosome 22 are involved in the development of Phelan-McDermid syndrome, neurofibromatosis type 2, autism and schizophrenia. Additionally, translocations between chromosomes 9 and 22 may lead to the formation of the Philadelphia chromosome and the subsequent production of the novel fusion protein Bcr-Abl, a potent cell proliferation activator found in several types of leukemias. The LOC653135 gene product has been provisionally designated LOC653135 pending further characterization.

REFERENCES

- Gilbert, F. 1998. Disease genes and chromosomes: disease maps of the human genome. *Chromosome 22. Genet. Test.* 2: 89-97.
- Schwab, S.G. and Wildenauer, D.B. 1999. Chromosome 22 workshop report. *Am. J. Med. Genet.* 88: 276-278.
- Tsilchorozidou, T., Menko, F.H., Lalloo, F., Kidd, A., De Silva, R., Thomas, H., Smith, P., Malcolmson, A., Dore, J., Madan, K., Brown, A., Yovos, J.G., Tsaligopoulos, M., Vogiatzis, N., Baser, M.E., Wallace, A.J. and Evans, D.G. 2004. Constitutional rearrangements of chromosome 22 as a cause of neurofibromatosis 2. *J. Med. Genet.* 41: 529-534.
- Arinami, T. 2006. Analyses of the associations between the genes of 22q11 deletion syndrome and schizophrenia. *J. Hum. Genet.* 51: 1037-1045.
- Paylor, R., Glaser, B., Mupo, A., Ataliotis, P., Spencer, C., Sobotka, A., Sparks, C., Choi, C.H., Oghalai, J., Curran, S., Murphy, K.C., Monks, S., Williams, N., O'Donovan, M.C., Owen, M.J., Scambler, P.J. and Lindsay, E. 2006. Tbx1 haploinsufficiency is linked to behavioral disorders in mice and humans: implications for 22q11 deletion syndrome. *Proc. Natl. Acad. Sci. USA* 103: 7729-7734.
- Zheng, X., Güller, S., Beissert, T., Puccetti, E. and Ruthardt, M. 2006. Bcr and its mutants, the reciprocal t(9;22)-associated Abl/Bcr fusion proteins, differentially regulate the cytoskeleton and cell motility. *BMC Cancer* 6: 262.
- Ahronowitz, I., Xin, W., Kiely, R., Sims, K., MacCollin, M. and Nunes, F.P. 2007. Mutational spectrum of the NF2 gene: a meta-analysis of 12 years of research and diagnostic laboratory findings. *Hum. Mutat.* 28: 1-12.
- Hay, B.N. 2007. Deletion 22q11: spectrum of associated disorders. *Semin. Pediatr. Neurol.* 14: 136-139.

CHROMOSOMAL LOCATION

Genetic locus: LOC653135 (human) mapping to 22q11.21.

STORAGE

Store at 4° C, ****DO NOT FREEZE****. Stable for one year from the date of shipment. Non-hazardous. No MSDS required.

SOURCE

LOC653135 (V-23) is an affinity purified rabbit polyclonal antibody raised against synthetic LOC653135 peptide of human origin.

PRODUCT

Each vial contains 50 µg IgG in 500 µl PBS with < 0.1% sodium azide, 0.1% gelatin and < 0.02% sucrose.

APPLICATIONS

LOC653135 (V-23) is recommended for detection of LOC653135 of human origin by Western Blotting (starting dilution 1:200, dilution range 1:100-1:1000), immunoprecipitation [1-2 µg per 100-500 µg of total protein (1 ml of cell lysate)] and solid phase ELISA (starting dilution 1:30, dilution range 1:30-1:3000).

Suitable for use as control antibody for LOC653135 siRNA (h): sc-75556, LOC653135 shRNA Plasmid (h): sc-75556-SH and LOC653135 shRNA (h) Lentiviral Particles: sc-75556-V.

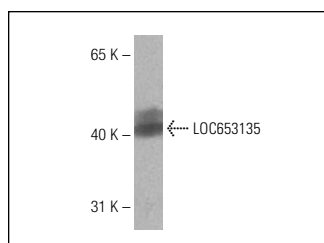
Molecular Weight of LOC653135: 45 kDa.

Positive Controls: MCF7 whole cell lysate: sc-2206.

RECOMMENDED SECONDARY REAGENTS

To ensure optimal results, the following support (secondary) reagents are recommended: 1) Western Blotting: use goat anti-rabbit IgG-HRP: sc-2004 (dilution range: 1:2000-1:100,000) or Cruz Marker™ compatible goat anti-rabbit IgG-HRP: sc-2030 (dilution range: 1:2000-1:5000), Cruz Marker™ Molecular Weight Standards: sc-2035, TBS Blotto A Blocking Reagent: sc-2333 and Western Blotting Luminol Reagent: sc-2048. 2) Immunoprecipitation: use Protein A/G PLUS-Agarose: sc-2003 (0.5 ml agarose/2.0 ml).

DATA



LOC653135 (V-23): sc-133753. Western blot analysis of LOC653135 expression in MCF7 whole cell lysate.

RESEARCH USE

For research use only, not for use in diagnostic procedures.

PROTOCOLS

See our web site at www.scbt.com or our catalog for detailed protocols and support products.