

LRRC17 (X-21): sc-133761

BACKGROUND

The leucine-rich (LRR) repeat is a 20-30 amino acid motif that forms a hydrophobic α/β horseshoe fold, allowing it to accommodate several leucine residues within a tightly packed core. All LRR repeats contain a variable segment and a highly conserved segment, the latter of which accounts for 11 or 12 residues of the entire LRR motif. LRRC17 (Leucine-rich repeat-containing protein 17), also known as p37NB, is a 441 amino acid protein that localizes to the cytoplasm and contains six LRR repeats. The protein is expressed at high levels in ovary, heart, pancreas, skeletal muscle, lung, and fetal kidney and lung. LRRC17 is expressed at higher levels in non-neuronal (S-type) neuroblastoma cells than in neuroblastic (N-type) neuroblastoma cells.

REFERENCES

1. Kobe, B. and Deisenhofer, J. 1994. The leucine-rich repeat: a versatile binding motif. *Trends Biochem. Sci.* 19: 415-421.
2. Kobe, B. and Deisenhofer, J. 1995. Proteins with leucine-rich repeats. *Curr. Opin. Struct. Biol.* 5: 409-416.
3. Kim, D., et al. 1996. A cDNA encoding a putative 37 kDa leucine-rich repeat (LRR) protein, p37NB, isolated from S-type neuroblastoma cell has a differential tissue distribution. *Biochim. Biophys. Acta* 1309: 183-188.
4. Kobe, B. and Kajava, A.V. 2001. The leucine-rich repeat as a protein recognition motif. *Curr. Opin. Struct. Biol.* 11: 725-732.
5. Hillier, L.W., et al. 2003. The DNA sequence of human chromosome 7. *Nature* 424: 157-164.
6. Kedzierski, Ł, et al. 2004. Leucine-rich repeats in host-pathogen interactions. *Arch. Immunol. Ther. Exp.* 52: 104-112.
7. Enkhbayar, P., et al. 2004. Structural principles of leucine-rich repeat (LRR) proteins. *Proteins* 54: 394-403.
8. Matsushima, N., et al. 2005. Structural analysis of leucine-rich-repeat variants in proteins associated with human diseases. *Cell. Mol. Life Sci.* 62: 2771-2791.

CHROMOSOMAL LOCATION

Genetic locus: LRRC17 (human) mapping to 7q22.1.

SOURCE

LRRC17 (X-21) is an affinity purified rabbit polyclonal antibody raised against synthetic LRRC17 peptide of human origin.

PRODUCT

Each vial contains 50 μ g IgG in 500 μ l PBS with < 0.1% sodium azide, 0.1% gelatin and < 0.02% sucrose.

STORAGE

Store at 4° C, ****DO NOT FREEZE****. Stable for one year from the date of shipment. Non-hazardous. No MSDS required.

APPLICATIONS

LRRC17 (X-21) is recommended for detection of LRRC17 of human origin by Western Blotting (starting dilution 1:200, dilution range 1:100-1:1000), immunoprecipitation [1-2 μ g per 100-500 μ g of total protein (1 ml of cell lysate)] and solid phase ELISA (starting dilution 1:30, dilution range 1:30-1:3000).

Suitable for use as control antibody for LRRC17 siRNA (h): sc-89649, LRRC17 shRNA Plasmid (h): sc-89649-SH and LRRC17 shRNA (h) Lentiviral Particles: sc-89649-V.

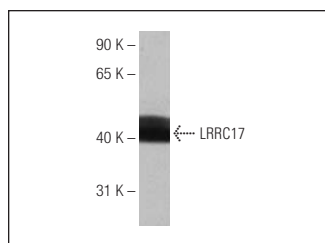
Molecular Weight of LRRC17: 37 kDa.

Positive Controls: MCF7 whole cell lysate: sc-2206.

RECOMMENDED SECONDARY REAGENTS

To ensure optimal results, the following support (secondary) reagents are recommended: 1) Western Blotting: use goat anti-rabbit IgG-HRP: sc-2004 (dilution range: 1:2000-1:100,000) or Cruz Marker™ compatible goat anti-rabbit IgG-HRP: sc-2030 (dilution range: 1:2000-1:5000), Cruz Marker™ Molecular Weight Standards: sc-2035, TBS Blotto A Blocking Reagent: sc-2333 and Western Blotting Luminol Reagent: sc-2048. 2) Immunoprecipitation: use Protein A/G PLUS-Agarose: sc-2003 (0.5 ml agarose/2.0 ml).

DATA



LRRC17 (X-21): sc-133761. Western blot analysis of LRRC17 expression in MCF7 whole cell lysate.

RESEARCH USE

For research use only, not for use in diagnostic procedures.

PROTOCOLS

See our web site at www.scbt.com or our catalog for detailed protocols and support products.