

Membralin (B-21): sc-133781

BACKGROUND

The gene encoding human Membralin, C19orf6, localizes to chromosome 19p13.3. It contains 11 exons, which encode at least two splice variants in human cancer. Membralin is a multi-pass membrane protein and exists either as a long or short form. The long form of Membralin comprises all 11 exons, while the short form contains all exons except exon 10. Expression of different Membralin isoforms depends on tissue type. The long form is expressed in ovarian and colorectal carcinomas, whereas the short form is expressed in breast or pancreatic carcinomas. Because Membralin expression in ovarian carcinomas is highest in serous carcinomas as compared to surface epithelium carcinomas, expression of Membralin may be useful as a novel tumor-associated marker in ovarian serous carcinomas.

REFERENCES

1. Andersson, O. and von Euler, G. 2003. Characterization and expression of the gene encoding Membralin, an evolutionary conserved protein expressed in the central nervous system. *Brain Res. Gene Expr. Patterns* 1: 205-212.
2. Bendel, O., Meijer, B., Hurd, Y. and von Euler, G. 2005. Cloning and expression of the human NMDA receptor subunit NR3B in the adult human hippocampus. *Neurosci. Lett.* 377: 31-36.
3. Chen, Y.C., Davidson, B., Cheng, C.C., Maitra, A., Giuntoli, R.L., Hruban, R.H., Wang, T.L. and Shih, Ie.M. 2005. Identification and characterization of Membralin, a novel tumor-associated gene, in ovarian carcinoma. *Biochim. Biophys. Acta* 1730: 96-102.

CHROMOSOMAL LOCATION

Genetic locus: C19orf6 (human) mapping to 19p13.3; ORF61 (mouse) mapping to 10 C1.

SOURCE

Membralin (B-21) is a Protein A purified rabbit polyclonal antibody raised against synthetic Membralin peptide of human origin.

APPLICATIONS

Membralin (B-21) is recommended for detection of Membralin of mouse, rat, human and zebrafish origin by Western Blotting (starting dilution 1:200, dilution range 1:100-1:1000), immunoprecipitation [1-2 µg per 100-500 µg of total protein (1 ml of cell lysate)], immunofluorescence (starting dilution 1:50, dilution range 1:50-1:500), immunohistochemistry (including paraffin-embedded sections) (starting dilution 1:50, dilution range 1:50-1:500) and solid phase ELISA (starting dilution 1:30, dilution range 1:30-1:3000).

Suitable for use as control antibody for Membralin siRNA (h): sc-61018, Membralin siRNA (m): sc-61019, Membralin shRNA Plasmid (h): sc-61018-SH, Membralin shRNA Plasmid (m): sc-61019-SH, Membralin shRNA (h) Lentiviral Particles: sc-61018-V and Membralin shRNA (m) Lentiviral Particles: sc-61019-V.

Molecular Weight of Membralin: 68 kDa.

Positive Controls: Jurkat whole cell lysate: sc-2204, Membralin (h2): 293T Lysate: sc-170525 or human kidney tissue.

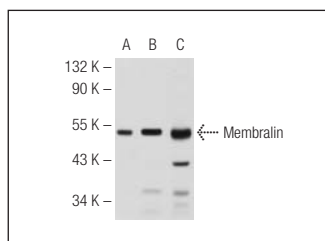
PRODUCT

Each vial contains 100 µg IgG in 1.0 ml PBS with < 0.1% sodium azide, 0.1% gelatin and < 0.02% sucrose.

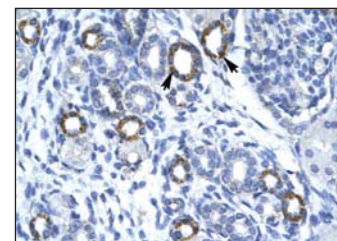
RECOMMENDED SECONDARY REAGENTS

To ensure optimal results, the following support (secondary) reagents are recommended: 1) Western Blotting: use goat anti-rabbit IgG-HRP: sc-2004 (dilution range: 1:2000-1:100,000) or Cruz Marker™ compatible goat anti-rabbit IgG-HRP: sc-2030 (dilution range: 1:2000-1:5000), Cruz Marker™ Molecular Weight Standards: sc-2035, TBS Blotto A Blocking Reagent: sc-2333 and Western Blotting Luminol Reagent: sc-2048. 2) Immunoprecipitation: use Protein A/G PLUS-Agarose: sc-2003 (0.5 ml agarose/2.0 ml). 3) Immunofluorescence: use goat anti-rabbit IgG-FITC: sc-2012 (dilution range: 1:100-1:400) or goat anti-rabbit IgG-TR: sc-2780 (dilution range: 1:100-1:400) with UltraCruz™ Mounting Medium: sc-24941. 4) Immunohistochemistry: use ImmunoCruz™: sc-2051 or ABC: sc-2018 rabbit IgG Staining Systems.

DATA



Membralin (B-21): sc-133781. Western blot analysis of Membralin expression in non-transfected 293T: sc-117752 (A), human Membralin transfected 293T: sc-170525 (B) and Jurkat (C) whole cell lysates.



Membralin (B-21): sc-133781. Immunoperoxidase staining of formalin-fixed, paraffin-embedded human kidney tissue showing cytoplasmic localization.

STORAGE

Store at 4° C, ****DO NOT FREEZE****. Stable for one year from the date of shipment. Non-hazardous. No MSDS required.

RESEARCH USE

For research use only, not for use in diagnostic procedures.

PROTOCOLS

See our web site at www.scbt.com or our catalog for detailed protocols and support products.