

Mitsugumin23 (D-23): sc-133788

BACKGROUND

With approximately 135 million base pairs and 1,400 genes, chromosome 11 makes up around 4% of human genomic DNA and is considered a gene and disease association dense chromosome. Defects in chromosome 11 have been linked to many diseases, including Wilms' tumors, WAGR syndrome, and Denys-Drash syndrome, Sickle cell anemia and β thalassemia. On chromosome 11q12.2 is a gene encoding Mitsugumin23. Mitsugumin23 (Mg23), also known as transmembrane protein 109 (TMEM109), is a 243 amino acid multi-pass transmembrane protein localized to the membrane of the nucleus, endoplasmic reticulum and sarcoplasmic reticulum. It is comprised of two primary domains: a 33 amino acid signal peptide and a 109 amino acid chain consisting of four transmembrane domains.

REFERENCES

1. Brandt, N.R. and Caswell, A.H. 1999. Localization of mitsugumin 29 to transverse tubules in rabbit skeletal muscle. Arch. Biochem. Biophys. 371: 348-350.
2. Nagaraj, R.Y., Nosek, C.M., Brotto, M.A., Nishi, M., Takeshima, H., Nosek, T.M. and Ma, J. 2000. Increased susceptibility to fatigue of slow- and fast-twitch muscles from mice lacking the Mg29 gene. Physiol. Genomics 4: 43-49.
3. Brandt, N.R., Franklin, G., Brunschwig, J.P. and Caswell, A.H. 2001. The role of mitsugumin 29 in transverse tubules of rabbit skeletal muscle. Arch. Biochem. Biophys. 385: 406-409.
4. Pan, Z., Yang, D., Nagaraj, R.Y., Nosek, T.A., Nishi, M., Takeshima, H., Cheng, H. and Ma, J. 2002. Dysfunction of store-operated calcium channel in muscle cells lacking Mg29. Nat. Cell Biol. 4: 379-383.
5. Brotto, M.A., Nagaraj, R.Y., Brotto, L.S., Takeshima, H., Ma, J.J. and Nosek, T.M. 2004. Defective maintenance of intracellular Ca^{2+} homeostasis is linked to increased muscle fatigability in the Mg29 null mice. Cell Res. 14: 373-378.
6. Pan, Z., Hirata, Y., Nagaraj, R.Y., Zhao, J., Nishi, M., Hayek, S.M., Bhat, M.B., Takeshima, H. and Ma, J. 2004. Co-expression of Mg29 and ryanodine receptor leads to apoptotic cell death: effect mediated by intracellular Ca^{2+} release. J. Biol. Chem. 279: 19387-19390.
7. Weisleder, N., Brotto, M., Komazaki, S., Pan, Z., Zhao, X., Nosek, T., Parness, J., Takeshima, H. and Ma, J. 2006. Muscle aging is associated with compromised Ca^{2+} spark signaling and segregated intracellular Ca^{2+} release. J. Cell Biol. 174: 639-645.
8. Zhao, X., Weisleder, N., Thornton, A., Oppong, Y., Campbell, R., Ma, J. and Brotto, M. 2008. Compromised store-operated Ca^{2+} entry in aged skeletal muscle. Aging Cell 7: 561-568.
9. Masumiya, H., Asaumi, Y., Nishi, M., Minamisawa, S., Adachi-Akahane, S., Yoshida, M., Kangawa, K., Ito, K., Kagaya, Y., Yanagisawa, T., Yamazaki, T., Ma, J. and Takeshima, H. 2009. Mitsugumin 53-mediated maintenance of K^+ currents in cardiac myocytes. Channels. E-published.

RESEARCH USE

For research use only, not for use in diagnostic procedures.

CHROMOSOMAL LOCATION

Genetic locus: TMEM109 (human) mapping to 11q12.2; Tmem109 (mouse) mapping to 19 A.

SOURCE

Mitsugumin23 (D-23) is a Protein A purified rabbit polyclonal antibody raised against synthetic Mitsugumin23 peptide of human origin.

PRODUCT

Each vial contains 100 μ g IgG in 1.0 ml PBS with < 0.1% sodium azide, 0.1% gelatin and < 0.02% sucrose.

APPLICATIONS

Mitsugumin23 (D-23) is recommended for detection of Mitsugumin23 of human origin by Western Blotting (starting dilution 1:200, dilution range 1:100-1:1000), immunoprecipitation [1-2 μ g per 100-500 μ g of total protein (1 ml of cell lysate)] and solid phase ELISA (starting dilution 1:30, dilution range 1:30-1:3000).

Suitable for use as control antibody for Mitsugumin23 siRNA (h): sc-96448, Mitsugumin23 shRNA Plasmid (h): sc-96448-SH and Mitsugumin23 shRNA (h) Lentiviral Particles: sc-96448-V.

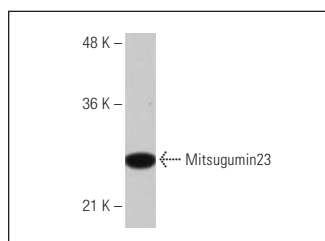
Molecular Weight of Mitsugumin23: 23 kDa.

Positive Controls: Jurkat whole cell lysate: sc-2204.

RECOMMENDED SECONDARY REAGENTS

To ensure optimal results, the following support (secondary) reagents are recommended: 1) Western Blotting: use goat anti-rabbit IgG-HRP: sc-2004 (dilution range: 1:2000-1:100,000) or Cruz Marker™ compatible goat anti-rabbit IgG-HRP: sc-2030 (dilution range: 1:2000-1:5000), Cruz Marker™ Molecular Weight Standards: sc-2035, TBS Blotto A Blocking Reagent: sc-2333 and Western Blotting Luminol Reagent: sc-2048. 2) Immunoprecipitation: use Protein A/G PLUS-Agarose: sc-2003 (0.5 ml agarose/2.0 ml).

DATA



Mitsugumin23 (D-23): sc-133788. Western blot analysis of Mitsugumin23 expression in Jurkat whole cell lysate.

STORAGE

Store at 4° C, **DO NOT FREEZE**. Stable for one year from the date of shipment. Non-hazardous. No MSDS required.