

NELF (H-24): sc-133809

BACKGROUND

NELF (nasal embryonic luteinizing hormone-releasing hormone (LHRH) factor) is a 530 amino acid transcription factor involved in the migration of LHRH neurons, outgrowth of olfactory axons and suppression of transcription elongation. Known to couple NMDA receptor signaling to the nucleus, NELF displays both nuclear peripheral membrane localization, and when myristoylated, can localize outside of the nucleus. NELF is found in the peripheral and central nervous system during embryonic development, and is highly expressed in adult testis, kidney and brain. Existing as five alternatively spliced isoforms, the gene encoding NELF maps to human chromosome 9q34.3, which has been linked to the development of Idiopathic hypogonadotropic hypogonadism (IHH), a disorder resulting in impaired pubertal maturation and reproductive function.

REFERENCES

1. Kramer, P.R. and Wray, S. 2000. Novel gene expressed in nasal region influences outgrowth of olfactory axons and migration of luteinizing hormone-releasing hormone (LHRH) neurons. *Genes Dev.* 14: 1824-1834.
2. Pitteloud, N., Hayes, F.J., Boepple, P.A., DeCruz, S., Seminara, S.B., MacLaughlin, D.T. and Crowley, W.F. 2002. The role of prior pubertal development, biochemical markers of testicular maturation, and genetics in elucidating the phenotypic heterogeneity of idiopathic hypogonadotropic hypogonadism. *J. Clin. Endocrinol. Metab.* 87: 152-160.
3. Miura, K., Acierno, J.S. and Seminara, S.B. 2004. Characterization of the human nasal embryonic LHRH factor gene, NELF, and a mutation screening among 65 patients with idiopathic hypogonadotropic hypogonadism (IHH). *J. Hum. Genet.* 49: 265-268.
4. Pitteloud, N., Quinton, R., Pearce, S., Raivio, T., Acierno, J., Dwyer, A., Plummer, L., Hughes, V., Seminara, S., Cheng, Y.Z., Li, W.P., Maccoll, G., Eliseenkova, A.V., Olsen, S.K., Ibrahim, O.A., Hayes, F.J., et al. 2007. Digenic mutations account for variable phenotypes in idiopathic hypogonadotropic hypogonadism. *J. Clin. Invest.* 117: 457-463.
5. Online Mendelian Inheritance in Man, OMIM™. 2007. Johns Hopkins University, Baltimore, MD. MIM Number: 608137. World Wide Web URL: <http://www.ncbi.nlm.nih.gov/omim/>
6. Pedersen-White, J.R., Chorich, L.P., Bick, D.P., Sherins, R.J. and Layman, L.C. 2008. The prevalence of intragenic deletions in patients with idiopathic hypogonadotropic hypogonadism and Kallmann syndrome. *Mol. Hum. Reprod.* 14: 367-370.

CHROMOSOMAL LOCATION

Genetic locus: NELF (human) mapping to 9q34.3; Nelf (mouse) mapping to 2 A3.

SOURCE

NELF (H-24) is a Protein A purified rabbit polyclonal antibody raised against synthetic NELF peptide of human origin.

PRODUCT

Each vial contains 100 µg IgG in 1.0 ml PBS with < 0.1% sodium azide, 0.1% gelatin and < 0.02% sucrose.

APPLICATIONS

NELF (H-24) is recommended for detection of NELF of mouse, rat, human and canine origin by Western Blotting (starting dilution 1:200, dilution range 1:100-1:1000), immunoprecipitation [1-2 µg per 100-500 µg of total protein (1 ml of cell lysate)] and solid phase ELISA (starting dilution 1:30, dilution range 1:30-1:3000).

Suitable for use as control antibody for NELF siRNA (h): sc-92594, NELF siRNA (m): sc-149907, NELF shRNA Plasmid (h): sc-92594-SH, NELF shRNA Plasmid (m): sc-149907-SH, NELF shRNA (h) Lentiviral Particles: sc-92594-V and NELF shRNA (m) Lentiviral Particles: sc-149907-V.

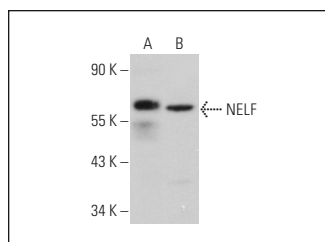
Molecular Weight of NELF isoforms: 60/57/44 kDa.

Positive Controls: mouse brain extract: sc-2253, Neuro-2A whole cell lysate: sc-364185 or Hep G2 cell lysate: sc-2227.

RECOMMENDED SECONDARY REAGENTS

To ensure optimal results, the following support (secondary) reagents are recommended: 1) Western Blotting: use goat anti-rabbit IgG-HRP: sc-2004 (dilution range: 1:2000-1:100,000) or Cruz Marker™ compatible goat anti-rabbit IgG-HRP: sc-2030 (dilution range: 1:2000-1:5000), Cruz Marker™ Molecular Weight Standards: sc-2035, TBS Blotto A Blocking Reagent: sc-2333 and Western Blotting Luminol Reagent: sc-2048. 2) Immunoprecipitation: use Protein A/G PLUS-Agarose: sc-2003 (0.5 ml agarose/2.0 ml).

DATA



NELF (H-24): sc-133809. Western blot analysis of NELF expression in mouse brain tissue extract (A) and Neuro-2A whole cell lysate (B).

STORAGE

Store at 4° C, ****DO NOT FREEZE****. Stable for one year from the date of shipment. Non-hazardous. No MSDS required.

RESEARCH USE

For research use only, not for use in diagnostic procedures.

PROTOCOLS

See our web site at www.scbt.com or our catalog for detailed protocols and support products.