

NOL6 (Q-23): sc-133838



The Power to Question

BACKGROUND

NOL6 (nucleolar protein 6), also known as NRAP or UTP22, is a 1,146 amino acid nucleolar protein that belongs to the NRAP family and is thought to be associated with rRNA. NOL6 may be involved in ribosome biogenesis and is expressed at high levels in spleen, colon, testis, brain, kidney and stomach, where it exists as four alternatively spliced isoforms, three of which are designated NOL6 α , β and γ . Human NOL6, shares 88% sequence identity with its mouse counterpart, suggesting a conserved role between species. The gene encoding NOL6 maps to human chromosome 9, which houses over 900 genes and comprises nearly 4% of the human genome. Hereditary hemorrhagic telangiectasia, which is characterized by harmful vascular defects, and Familial dysautonomia, are both associated with chromosome 9. Notably, chromosome 9 encompasses the largest interferon family gene cluster.

REFERENCES

- Andersen, J.S., Lyon, C.E., Fox, A.H., Leung, A.K., Lam, Y.W., Steen, H., Mann, M. and Lamond, A.I. 2002. Directed proteomic analysis of the human nucleolus. *Curr. Biol.* 12: 1-11.
- Utama, B., Kennedy, D., Ru, K. and Mattick, J.S. 2002. Isolation and characterization of a new nucleolar protein, Nrap, that is conserved from yeast to humans. *Genes Cells* 7: 115-132.
- Scherl, A., Couté, Y., Déon, C., Callé, A., Kindbeiter, K., Sanchez, J.C., Greco, A., Hochstrasser, D. and Diaz, J.J. 2002. Functional proteomic analysis of human nucleolus. *Mol. Biol. Cell* 13: 4100-4109.
- Bernstein, K.A., Gallagher, J.E., Mitchell, B.M., Granneman, S. and Baserga, S.J. 2004. The small-subunit processome is a ribosome assembly intermediate. *Eukaryotic Cell* 3: 1619-1626.
- Andersen, J.S., Lam, Y.W., Leung, A.K., Ong, S.E., Lyon, C.E., Lamond, A.I. and Mann, M. 2005. Nucleolar proteome dynamics. *Nature* 433: 77-83.
- Temtamy, S.A., Kamel, A.K., Ismail, S., Helmy, N.A., Aglan, M.S., El Gammal, M., El Ruby, M. and Mohamed, A.M. 2007. Phenotypic and cytogenetic spectrum of 9p trisomy. *Genet. Couns.* 18: 29-48.
- Online Mendelian Inheritance in Man, OMIM™. 2007. Johns Hopkins University, Baltimore, MD. MIM Number: 611532. World Wide Web URL: <http://www.ncbi.nlm.nih.gov/omim/>

CHROMOSOMAL LOCATION

Genetic locus: NOL6 (human) mapping to 9p13.3.

SOURCE

NOL6 (Q-23) is a Protein A purified rabbit polyclonal antibody raised against synthetic NOL6 peptide of human origin.

PRODUCT

Each vial contains 100 μ g IgG in 1.0 ml PBS with < 0.1% sodium azide, 0.1% gelatin and < 0.02% sucrose.

RESEARCH USE

For research use only, not for use in diagnostic procedures.

APPLICATIONS

NOL6 (Q-23) is recommended for detection of NOL6 of human origin by Western Blotting (starting dilution 1:200, dilution range 1:100-1:1000), immunoprecipitation [1-2 μ g per 100-500 μ g of total protein (1 ml of cell lysate)], immunofluorescence (starting dilution 1:50, dilution range 1:50-1:500), immunohistochemistry (including paraffin-embedded sections) (starting dilution 1:50, dilution range 1:50-1:500) and solid phase ELISA (starting dilution 1:30, dilution range 1:30-1:3000).

Suitable for use as control antibody for NOL6 siRNA (h): sc-92867, NOL6 shRNA Plasmid (h): sc-92867-SH and NOL6 shRNA (h) Lentiviral Particles: sc-92867-V.

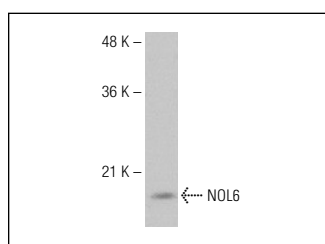
Molecular Weight of NOL6 isoforms: 128/112/78 kDa.

Positive Controls: Hep G2 cell lysate: sc-2227 or human intestine tissue.

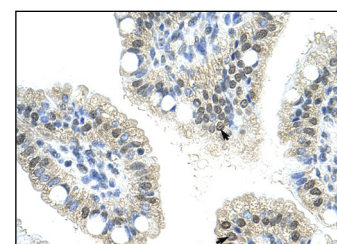
RECOMMENDED SECONDARY REAGENTS

To ensure optimal results, the following support (secondary) reagents are recommended: 1) Western Blotting: use goat anti-rabbit IgG-HRP: sc-2004 (dilution range: 1:2000-1:100,000) or Cruz Marker™ compatible goat anti-rabbit IgG-HRP: sc-2030 (dilution range: 1:2000-1:5000), Cruz Marker™ Molecular Weight Standards: sc-2035, TBS Blotto A Blocking Reagent: sc-2333 and Western Blotting Luminol Reagent: sc-2048. 2) Immunoprecipitation: use Protein A/G PLUS-Agarose: sc-2003 (0.5 ml agarose/2.0 ml). 3) Immunofluorescence: use goat anti-rabbit IgG-FITC: sc-2012 (dilution range: 1:100-1:400) or goat anti-rabbit IgG-TR: sc-2780 (dilution range: 1:100-1:400) with UltraCruz™ Mounting Medium: sc-24941. 4) Immunohistochemistry: use ImmunoCruz™: sc-2051 or ABC: sc-2018 rabbit IgG Staining Systems.

DATA



NOL6 (Q-23): sc-133838. Western blot analysis of NOL6 expression in Hep G2 whole cell lysate.



NOL6 (Q-23): sc-133838. Immunoperoxidase staining of formalin-fixed, paraffin-embedded human intestine tissue showing nuclear and cytoplasmic localization.

STORAGE

Store at 4° C, **DO NOT FREEZE**. Stable for one year from the date of shipment. Non-hazardous. No MSDS required.

PROTOCOLS

See our web site at www.scbt.com or our catalog for detailed protocols and support products.