

# NSUN6 (T-24): sc-133849

## BACKGROUND

The nucleolus consists of a number of specific proteins that play a critical role in the assembly of ribosomes, as well as in the maintenance and structural integrity of the nucleolus. NSUN6 (NOL1/NOP2/Sun domain family member 6), also known as NOPD1 (NOL1/NOP2/Sun and PUA domain-containing protein 1), is a 469 amino acid protein that belongs to the methyltransferase superfamily. NSUN6 contains 1 PUA domain and may have S-adenosyl-L-methionine-dependent methyl-transferase activity. The gene encoding NSUN6 maps to human chromosome 10, which houses over 1,200 genes and comprises nearly 4.5% of the human genome. Defects in some of the genes that map to chromosome 10 are associated with Charcot-Marie Tooth disease, Jackson-Weiss syndrome, Usher syndrome, nonsyndromic deafness, Wolman's syndrome, Cowden syndrome, multiple endocrine neoplasia type 2 and porphyria.

## REFERENCES

- Henríquez, R., Blobel, G. and Aris, J.P. 1990. Isolation and sequencing of NOP1. A yeast gene encoding a nucleolar protein homologous to a human autoimmune antigen. *J. Biol. Chem.* 265: 2209-2215.
- Deloukas, P., French, L., Meitinger, T. and Moschonas, N.K. 2000. Report of the third international workshop on human chromosome 10 mapping and sequencing 1999. *Cytogenet. Cell Genet.* 90: 1-12.
- Deloukas, P., et al. 2004. The DNA sequence and comparative analysis of human chromosome 10. *Nature* 429: 375-381.
- Nonneman, D. and Rohrer, G.A. 2004. Comparative mapping of human chromosome 10 to pig chromosomes 10 and 14. *Anim. Genet.* 35: 338-343.
- Sakita-Suto, S., Kanda, A., Suzuki, F., Sato, S., Takata, T. and Tatsuka, M. 2007. Aurora-B regulates RNA methyltransferase NSUN2. *Mol. Biol. Cell.* 18: 1107-1117.
- Cho, M.Y., Kim, H.S., Eng, C., Kim, D.S., Kang, S.J., Eom, M., Yi, S.Y. and Bronner, M.P. 2008. First report of ovarian dysgerminoma in Cowden syndrome with germline PTEN mutation and PTEN-related 10q loss of tumor heterozygosity. *Am. J. Surg. Pathol.* 32: 1258-1264.

## CHROMOSOMAL LOCATION

Genetic locus: NSUN6 (human) mapping to 10p12.33; Nsun6 (mouse) mapping to 2 A2.

## SOURCE

NSUN6 (T-24) is an affinity purified rabbit polyclonal antibody raised against synthetic NSUN6 peptide of human origin.

## PRODUCT

Each vial contains 50 µg IgG in 500 µl PBS with < 0.1% sodium azide, 0.1% gelatin and < 0.02% sucrose.

## STORAGE

Store at 4° C, **\*\*DO NOT FREEZE\*\***. Stable for one year from the date of shipment. Non-hazardous. No MSDS required.

## APPLICATIONS

NSUN6 (T-24) is recommended for detection of NSUN6 of mouse, rat and human origin by Western Blotting (starting dilution 1:200, dilution range 1:100-1:1000), immunoprecipitation [1-2 µg per 100-500 µg of total protein (1 ml of cell lysate)] and solid phase ELISA (starting dilution 1:30, dilution range 1:30-1:3000).

Suitable for use as control antibody for NSUN6 siRNA (h): sc-75968, NSUN6 siRNA (m): sc-75969, NSUN6 shRNA Plasmid (h): sc-75968-SH, NSUN6 shRNA Plasmid (m): sc-75969-SH, NSUN6 shRNA (h) Lentiviral Particles: sc-75968-V and NSUN6 shRNA (m) Lentiviral Particles: sc-75969-V.

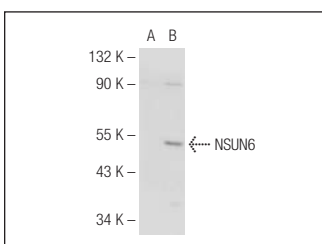
Molecular Weight of NSUN6: 52 kDa.

Positive Controls: A549 cell lysate: sc-2413, NSUN6 (h): 293T Lysate: sc-115359 or fetal muscle tissue extract.

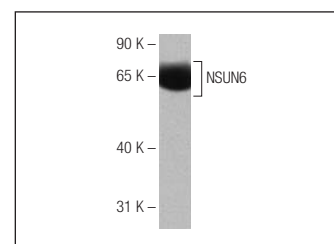
## RECOMMENDED SECONDARY REAGENTS

To ensure optimal results, the following support (secondary) reagents are recommended: 1) Western Blotting: use goat anti-rabbit IgG-HRP: sc-2004 (dilution range: 1:2000-1:100,000) or Cruz Marker™ compatible goat anti-rabbit IgG-HRP: sc-2030 (dilution range: 1:2000-1:5000), Cruz Marker™ Molecular Weight Standards: sc-2035, TBS Blotto A Blocking Reagent: sc-2333 and Western Blotting Luminol Reagent: sc-2048. 2) Immunoprecipitation: use Protein A/G PLUS-Agarose: sc-2003 (0.5 ml agarose/2.0 ml).

## DATA



NSUN6 (T-24): sc-133849. Western blot analysis of NSUN6 expression in non-transfected: sc-117752 (A) and human NSUN6 transfected: sc-115359 (B) 293T whole cell lysates.



NSUN6 (T-24): sc-133849. Western blot analysis of NSUN6 expression in human fetal muscle tissue extract.

## RESEARCH USE

For research use only, not for use in diagnostic procedures.

## PROTOCOLS

See our web site at [www.scbt.com](http://www.scbt.com) or our catalog for detailed protocols and support products.