

# OCEL1 (W-24): sc-133864

## BACKGROUND

OCEL1 (occludin/ELL domain containing 1) is a 264 amino acid protein that is encoded by a gene which maps to human chromosome 19. Chromosome 19, which consists of over 63 million bases, houses approximately 1,400 genes and is recognized for having the greatest gene density of the human chromosomes. It is the genetic home for a number of immunoglobulin (Ig) superfamily members, including the killer cell and leukocyte Ig-like receptors, a number of ICAMs, the CEACAM and PSG family and Fc receptors (Fc Rs). Key genes for eye color and hair color also map to chromosome 19.

## REFERENCES

- Zimmermann, W., et al. 1988. Chromosomal localization of the carcinoembryonic antigen gene family and differential expression in various tumors. *Cancer Res.* 48: 2550-2554.
- LaPoint, S.F., et al. 2000. Cerebral autosomal dominant arteriopathy with subcortical infarcts and leukoencephalopathy (CADASIL). *Adv. Anat. Pathol.* 7: 307-321.
- Trettel, F., et al. 2000. A fine physical map of the CACNA1A gene region on 19p13.1-p13.2 chromosome. *Gene* 241: 45-50.
- Buchet-Poyau, K., et al. 2002. Search for the second Peutz-Jeghers syndrome locus: exclusion of the STK13, PRKCG, KLK10, and PSCD2 genes on chromosome 19 and the STK11IP gene on chromosome 2. *Cytogenet. Genome Res.* 97: 171-178.
- Moodie, S.J., et al. 2002. Analysis of candidate genes on chromosome 19 in coeliac disease: an association study of the KIR and LILR gene clusters. *Eur. J. Immunogenet.* 29: 287-291.
- Grimwood, J., et al. 2004. The DNA sequence and biology of human chromosome 19. *Nature* 428: 529-535.
- Parham, P. 2005. Immunogenetics of killer cell immunoglobulin-like receptors. *Mol. Immunol.* 42: 459-462.

## CHROMOSOMAL LOCATION

Genetic locus: OCEL1 (human) mapping to 19p13.11.

## SOURCE

OCEL1 (W-24) is an affinity purified rabbit polyclonal antibody raised against synthetic OCEL1 peptide of human origin.

## PRODUCT

Each vial contains 50 µg IgG in 500 µl PBS with < 0.1% sodium azide, 0.1% gelatin and < 0.02% sucrose.

## STORAGE

Store at 4° C, **\*\*DO NOT FREEZE\*\***. Stable for one year from the date of shipment. Non-hazardous. No MSDS required.

## RESEARCH USE

For research use only, not for use in diagnostic procedures.

## APPLICATIONS

OCEL1 (W-24) is recommended for detection of OCEL1 of human origin by Western Blotting (starting dilution 1:200, dilution range 1:100-1:1000), immunoprecipitation [1-2 µg per 100-500 µg of total protein (1 ml of cell lysate)] and solid phase ELISA (starting dilution 1:30, dilution range 1:30-1:3000).

Suitable for use as control antibody for OCEL1 siRNA (h): sc-97497, OCEL1 shRNA Plasmid (h): sc-97497-SH and OCEL1 shRNA (h) Lentiviral Particles: sc-97497-V.

Molecular Weight (predicted) of OCEL1: 29 kDa.

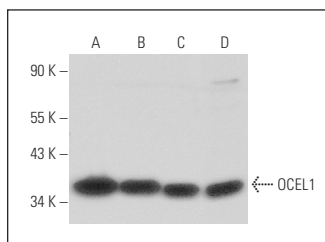
Molecular Weight (observed) of OCEL1: 36 kDa.

Positive Controls: NTERA-2 cl.D1 whole cell lysate: sc-364181, A549 cell lysate: sc-2413 or Hep G2 cell lysate: sc-2227.

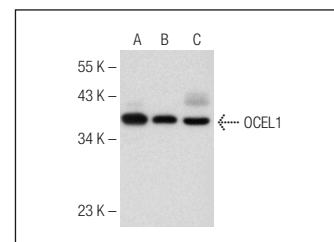
## RECOMMENDED SECONDARY REAGENTS

To ensure optimal results, the following support (secondary) reagents are recommended: 1) Western Blotting: use goat anti-rabbit IgG-HRP: sc-2004 (dilution range: 1:2000-1:100,000) or Cruz Marker™ compatible goat anti-rabbit IgG-HRP: sc-2030 (dilution range: 1:2000-1:5000), Cruz Marker™ Molecular Weight Standards: sc-2035, TBS Blotto A Blocking Reagent: sc-2333 and Western Blotting Luminol Reagent: sc-2048. 2) Immunoprecipitation: use Protein A/G PLUS-Agarose: sc-2003 (0.5 ml agarose/2.0 ml).

## DATA



OCEL1 (W-24): sc-133864. Western blot analysis of OCEL1 expression in NTERA-2 cl.D1 (A), NCI-H460 (B), MDA-MB-231 (C) and HeLa (D) whole cell lysates.



OCEL1 (W-24): sc-133864. Western blot analysis of OCEL1 expression in A549 (A), Hep G2 (B) and MCF7 (C) whole cell lysates.

## PROTOCOLS

See our web site at [www.scbt.com](http://www.scbt.com) or our catalog for detailed protocols and support products.