

OCT2 (X-22): sc-133867

BACKGROUND

Organic cation transporters (OCT) are expressed in the plasma membrane of epithelial cells from a wide range of tissues, where they function in the elimination of endogenous amines, cationic drugs and other xenobiotics. The structure of OCTs consists of a 12-transmembrane-domain structure and a large extracellular hydrophilic loop. In humans, OCT1 is primarily expressed in the liver, while OCT2 is expressed in the kidney. OCT3 is expressed in the placenta, skeletal muscle, prostate, aorta and liver. OCT2, also known as SLC22A2, is a multi-specific transporter protein localizing to the basolateral and luminal membranes of the kidney distal tubule and proximal tubules. OCT2 is responsible for mediating the pH-sensitive tubular uptake of organic compounds from circulation. An additional splice variant exists for OCT2, namely OCT2-A.

REFERENCES

- Gorboulev, V., et al. 1997. Cloning and characterization of two human polyspecific organic cation transporters. *DNA Cell. Biol.* 16: 871-881.
- Koepsell, H. 1998. Organic cation transporters in intestine, kidney, liver, and brain. *Annu. Rev. Physiol.* 60: 246-266.
- Wu, X., et al. 1998. Identity of the organic cation transporter OCT3 as the extraneuronal monoamine transporter (uptake2) and evidence for the expression of the transporter in the brain. *J. Biol. Chem.* 273: 32776-32786.
- Dresser, M.J., et al. 1999. Molecular and functional characteristics of clones human organic cation transporters. *Pharm. Biotechnol.* 12: 441-469.
- Verhaagh, S., et al. 1999. Cloning of the mouse and human solute carrier 22a3 (Slc22a3/SLC22A3) identifies a conserved cluster three organic cation transporters on mouse chromosome 17 and human 6q26-q27. *Genomics* 55: 209-218.
- Gründemann, D., et al. 2000. Gene structures of the human non-neuronal monoamine transporters EMT and OCT2. *Hum. Genet.* 106: 627-635.
- Online Mendelian Inheritance in Man, OMIM™. 2002. Johns Hopkins University, Baltimore, MD. MIM Number: 602608: World Wide Web URL: <http://www.ncbi.nlm.nih.gov/omim/>
- Fujita, T., et al. 2006. Transport of drugs in the kidney by the human organic cation transporter, OCT2 and its genetic variants. *J. Pharm. Sci.* 95: 25-36.

CHROMOSOMAL LOCATION

Genetic locus: SLC22A2 (human) mapping to 6q25.3.

SOURCE

OCT2 (X-22) is a Protein A purified rabbit polyclonal antibody raised against synthetic OCT2 peptide of human origin.

PRODUCT

Each vial contains 100 µg IgG in 1.0 ml PBS with < 0.1% sodium azide, 0.1% gelatin and < 0.02% sucrose.

APPLICATIONS

OCT2 (X-22) is recommended for detection of OCT2 of human origin by Western Blotting (starting dilution 1:200, dilution range 1:100-1:1000), immunoprecipitation [1-2 µg per 100-500 µg of total protein (1 ml of cell lysate)] and solid phase ELISA (starting dilution 1:30, dilution range 1:30-1:3000).

Suitable for use as control antibody for OCT2 siRNA (h): sc-42554, OCT2 shRNA Plasmid (h): sc-42554-SH and OCT2 shRNA (h) Lentiviral Particles: sc-42554-V.

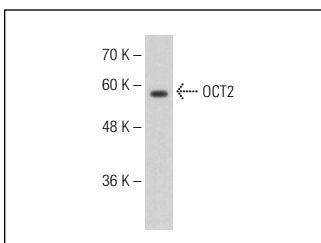
Molecular Weight of OCT2 isoforms: 63/55/27 kDa.

Positive Controls: Hep G2 cell lysate: sc-2227.

RECOMMENDED SECONDARY REAGENTS

To ensure optimal results, the following support (secondary) reagents are recommended: 1) Western Blotting: use goat anti-rabbit IgG-HRP: sc-2004 (dilution range: 1:2000-1:100,000) or Cruz Marker™ compatible goat anti-rabbit IgG-HRP: sc-2030 (dilution range: 1:2000-1:5000), Cruz Marker™ Molecular Weight Standards: sc-2035, TBS Blotto A Blocking Reagent: sc-2333 and Western Blotting Luminol Reagent: sc-2048. 2) Immunoprecipitation: use Protein A/G PLUS-Agarose: sc-2003 (0.5 ml agarose/2.0 ml).

DATA



OCT2 (X-22): sc-133867. Western blot analysis of OCT2 expression in Hep G2 whole cell lysate.

STORAGE

Store at 4° C, ****DO NOT FREEZE****. Stable for one year from the date of shipment. Non-hazardous. No MSDS required.

RESEARCH USE

For research use only, not for use in diagnostic procedures.

PROTOCOLS

See our web site at www.scbt.com or our catalog for detailed protocols and support products.