

PA28 γ (Z-21): sc-133876

BACKGROUND

PA28 is an interferon γ (IFN γ) inducible proteasome activator required for presentation of certain major histocompatibility (MHC) class I antigens. PA28 γ , for proteasome activator 28 γ , is also known as REG- γ , Ki nuclear autoantigen and proteasome activator complex subunit 3. PA28 α and PA28 β co-localize in the cell, whereas PA28 γ has a unique distribution. A functional relationship between PA28 γ and the α and β PA28 proteins is unknown. PA28 γ complexed with the proteasome may serve a function other than or in addition to activation, but PA28 γ may also have a proteasome-independent function. The PA28 complex is expressed constitutively in antigen-presenting cells. Downregulation of PA28 results in abnormal proteasome activation and has been implicated in the development of intimal hyperplasia in animal models. The PMSE3 gene maps to chromosome 17q21 and encodes the γ -subunit of the proteasome activator PA28.

CHROMOSOMAL LOCATION

Genetic locus: PSME3 (human) mapping to 17q21.31; Psme3 (mouse) mapping to 11 D.

SOURCE

PA28 γ (Z-21) is a an affinity purified rabbit polyclonal antibody raised against a peptide mapping within an internal region of PA28 γ of human origin.

PRODUCT

Each vial contains 50 μ g IgG in 0.5 ml of PBS with < 0.1% sodium azide, 0.1% gelatin and < 0.02% sucrose.

STORAGE

Store at 4° C, ****DO NOT FREEZE****. Stable for one year from the date of shipment. Non-hazardous. No MSDS required.

APPLICATIONS

PA28 γ (Z-21) is recommended for detection of PA28 γ of mouse, rat and human origin by Western Blotting (starting dilution 1:200, dilution range 1:100-1:1000), immunoprecipitation [1-2 μ g per 100-500 μ g of total protein (1 ml of cell lysate)], immunofluorescence (starting dilution 1:50, dilution range 1:50-1:500), immunohistochemistry (including paraffin-embedded sections) (starting dilution 1:50, dilution range 1:50-1:500) and solid phase ELISA (starting dilution 1:30, dilution range 1:30-1:3000).

PA28 γ (Z-21) is also recommended for detection of PA28 γ in additional species, including equine, bovine and canine.

Suitable for use as control antibody for PA28 γ siRNA (h): sc-106344, PA28 γ siRNA (m): sc-155925, PA28 γ shRNA Plasmid (h): sc-106344-SH, PA28 γ shRNA Plasmid (m): sc-155925-SH, PA28 γ shRNA (h) Lentiviral Particles: sc-106344-V and PA28 γ shRNA (m) Lentiviral Particles: sc-155925-V.

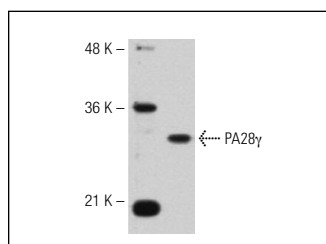
Molecular Weight of PA28 γ : 30 kDa.

Positive Controls: Hep G2 cell lysate: sc-2227, HeLa whole cell lysate: sc-2200 or rat brain extract: sc-2392.

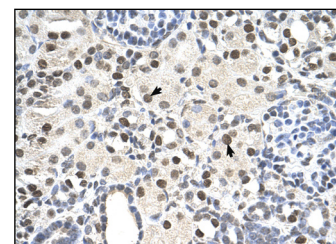
RECOMMENDED SECONDARY REAGENTS

To ensure optimal results, the following support (secondary) reagents are recommended: 1) Western Blotting: use goat anti-rabbit IgG-HRP: sc-2004 (dilution range: 1:2000-1:100,000) or Cruz Marker™ compatible goat anti-rabbit IgG-HRP: sc-2030 (dilution range: 1:2000-1:5000), Cruz Marker™ Molecular Weight Standards: sc-2035, TBS Blotto A Blocking Reagent: sc-2333 and Western Blotting Luminol Reagent: sc-2048. 2) Immunoprecipitation: use Protein A/G PLUS-Agarose: sc-2003 (0.5 ml agarose/2.0 ml). 3) Immunofluorescence: use goat anti-rabbit IgG-FITC: sc-2012 (dilution range: 1:100-1:400) or goat anti-rabbit IgG-TR: sc-2780 (dilution range: 1:100-1:400) with UltraCruz™ Mounting Medium: sc-24941. 4) Immunohistochemistry: use ImmunoCruz™: sc-2051 or ABC: sc-2018 rabbit IgG Staining Systems.

DATA



PA28 γ (Z-21): sc-133876. Western blot analysis of PA28 γ expression in Hep G2 whole cell lysate.



PA28 γ (Z-21): sc-133876. Immunoperoxidase staining of formalin-fixed, paraffin-embedded human kidney tissue showing nuclear and cytoplasmic localization.

RESEARCH USE

For research use only, not for use in diagnostic procedures.

PROTOCOLS

See our web site at www.scbt.com or our catalog for detailed protocols and support products.

MONOS
Satisfaction
Guaranteed

Try **PA28 γ (47): sc-136025**, our highly recommended monoclonal alternative to PA28 γ (Z-21).