

Pancreatic Lipase (Z-24): sc-133879

BACKGROUND

The lipase gene family belongs to one of the most robust genetic superfamilies found in living organisms, which includes esterases and thioesterases. Members of the AB hydrolase subfamily include Hepatic Lipase (HL), Endothelial Lipase (EL), Lipoprotein Lipase (LPL), Pancreatic Lipase (PL), Gastric Lipase (GL) and LCAT. These family members play a crucial role in the metabolism of lipids. Pancreatic lipase, also designated pancreatic triacylglycerol acyl hydrolase, is important for dietary fat absorption as it hydrolyses triglycerides into diglycerides, monoglycerides and free fatty acids.

REFERENCES

1. Lowe, M.E., Rosenblum, J.L. and Strauss, A.W. 1989. Cloning and characterization of human Pancreatic Lipase cDNA. *J. Biol. Chem.* 264: 20042-20048.
2. Winkler, F.K., D'Arcy, A. and Hunziker, W. 1990. Structure of human Pancreatic Lipase. *Nature* 343: 771-774.
3. Yajima, H., Noguchi, T., Ikeshima, E., Shiraki, M., Kanaya, T., Tsuboyama-Kasaoka, N., Ezaki, O., Oikawa, S., Kondo, K. 2005. Prevention of diet-induced obesity by dietary isomerized hop extract containing isohumulones, in rodents. *Int. J. Obes.* 29: 991-997.
4. Han, L.K., Zheng, Y.N., Yoshikawa, M., Okuda, H., Kimura, Y. 2005. Anti-obesity effects of chikusetsusaponins isolated from *Panax japonicus* rhizomes. *BMC Complement Altern. Med.* 5: 9.
5. Bijvelds, M.J., Bronsveld, I., Havinga, R., Sinaasappel, M., de Jonge, H.R., Verkade, H.J. 2005. Fat absorption in cystic fibrosis mice is impeded by defective lipolysis and post-lipolytic events. *Am. J. Physiol. Gastrointest. Liver Physiol.* 288: G646-653.
6. Sharma, N., Sharma, V.K., Seo, S.Y. 2005. Screening of some medicinal plants for anti-lipase activity. *J. Ethnopharmacol.* 97: 453-456.
7. Pappan, K.L., Pan, Z., Kwon, G., Marshall, C.A., Coleman, T., Goldberg, I.J., McDaniel, M.L., Semenkovich, C.F. 2005. Pancreatic β -cell Lipoprotein Lipase independently regulates islet glucose metabolism and normal Insulin secretion. *J. Biol. Chem.* 280: 9023-9029.

CHROMOSOMAL LOCATION

Genetic locus: PNLIP (human) mapping to 10q25.3.

SOURCE

Pancreatic Lipase (Z-24) is a Protein A purified rabbit polyclonal antibody raised against synthetic Pancreatic Lipase peptide of human origin.

PRODUCT

Each vial contains 100 μ g IgG in 1.0 ml PBS with < 0.1% sodium azide, 0.1% gelatin and < 0.02% sucrose.

STORAGE

Store at 4° C, ****DO NOT FREEZE****. Stable for one year from the date of shipment. Non-hazardous. No MSDS required.

APPLICATIONS

Pancreatic Lipase (Z-24) is recommended for detection of Pancreatic Lipase of human origin by Western Blotting (starting dilution 1:200, dilution range 1:100-1:1000), immunoprecipitation [1-2 μ g per 100-500 μ g of total protein (1 ml of cell lysate)], immunofluorescence (starting dilution 1:50, dilution range 1:50-1:500), immunohistochemistry (including paraffin-embedded sections) (starting dilution 1:50, dilution range 1:50-1:500) and solid phase ELISA (starting dilution 1:30, dilution range 1:30-1:3000).

Suitable for use as control antibody for Pancreatic Lipase siRNA (h): sc-61285, Pancreatic Lipase shRNA Plasmid (h): sc-61285-SH and Pancreatic Lipase shRNA (h) Lentiviral Particles: sc-61285-V.

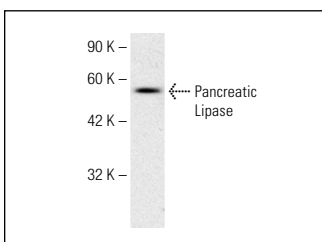
Molecular Weight of Pancreatic Lipase: 51 kDa.

Positive Controls: Jurkat whole cell lysate: sc-2204.

RECOMMENDED SECONDARY REAGENTS

To ensure optimal results, the following support (secondary) reagents are recommended: 1) Western Blotting: use goat anti-rabbit IgG-HRP: sc-2004 (dilution range: 1:2000-1:100,000) or Cruz Marker™ compatible goat anti-rabbit IgG-HRP: sc-2030 (dilution range: 1:2000-1:5000), Cruz Marker™ Molecular Weight Standards: sc-2035, TBS Blotto A Blocking Reagent: sc-2333 and Western Blotting Luminol Reagent: sc-2048. 2) Immunoprecipitation: use Protein A/G PLUS-Agarose: sc-2003 (0.5 ml agarose/2.0 ml). 3) Immunofluorescence: use goat anti-rabbit IgG-FITC: sc-2012 (dilution range: 1:100-1:400) or goat anti-rabbit IgG-TR: sc-2780 (dilution range: 1:100-1:400) with UltraCruz™ Mounting Medium: sc-24941. 4) Immunohistochemistry: use ImmunoCruz™: sc-2051 or ABC: sc-2018 rabbit IgG Staining Systems.

DATA



Pancreatic Lipase (Z-24): sc-133879. Western blot analysis of Pancreatic Lipase expression in Jurkat whole cell lysate.

RESEARCH USE

For research use only, not for use in diagnostic procedures.

MONOS
Satisfaction
Guaranteed

Try **Pancreatic Lipase (A-3): sc-374612**, our highly recommended monoclonal alternative to Pancreatic Lipase (Z-24).