

PRTFDC1 (L-23): sc-133928

BACKGROUND

PRTFDC1 (phosphoribosyltransferase domain-containing protein 1), also known as HHGP, is a 225 amino acid protein that belongs to the purine/pyrimidine phosphoribosyltransferase family. The functions of PRTFDC1 are not well understood; however it has been suggested that it is frequently silenced in oral squamous-cell carcinomas by aberrant promoter hypermethylation. Conserved in vertebrates, PRTFDC1 is suggested to be a possible tumor-suppressor. PRTFDC1 is encoded by a gene which maps to chromosome 10. Spanning nearly 135 million base pairs, chromosome 10 makes up approximately 4.5% of the total DNA in cells and encodes nearly 1,200 genes. Three isoforms of PRTFDC1 exist due to alternative splicing events.

REFERENCES

- Jabs, E.W., Li, X., Scott, A.F., Meyers, G., Chen, W., Eccles, M., Mao, J.I., Charnas, L.R., Jackson, C.E. and Jaye, M. 1994. Jackson-Weiss and Crouzon syndromes are allelic with mutations in fibroblast growth factor receptor 2. *Nat. Genet.* 8: 275-279.
- Deloukas, P., French, L., Meitinger, T. and Moschonas, N.K. 2000. Report of the third international workshop on human chromosome 10 mapping and sequencing 1999. *Cytogenet. Cell Genet.* 90: 1-12.
- Gilbert, F. 2001. Chromosome 10. *Genet. Test.* 5: 69-82.
- Nonneman, D. and Rohrer, G.A. 2004. Comparative mapping of human chromosome 10 to pig chromosomes 10 and 14. *Anim. Genet.* 35: 338-343.
- Deloukas, P., Earthrowl, M.E., Grafham, D.V., Rubinfeld, M., French, L., Steward, C.A., Sims, S.K., Jones, M.C., Searle, S., Scott, C., Howe, K., Hunt, S.E., Andrews, T.D., Gilbert, J.G., Swarbreck, D., Ashurst, J.L., et al. 2004. The DNA sequence and comparative analysis of human chromosome 10. *Nature* 429: 375-381.
- Nicklas, J.A. 2006. Pseudogenes of the human HPRT1 gene. *Environ. Mol. Mutagen.* 47: 212-218.
- Keebaugh, A.C., Sullivan, R.T. and Thomas, J.W. 2007. Gene duplication and inactivation in the HPRT gene family. *Genomics* 89: 134-142.
- Cai, L.Y., Abe, M., Izumi, S., Imura, M., Yasugi, T. and Ushijima, T. 2007. Identification of PRTFDC1 silencing and aberrant promoter methylation of GPR150, ITGA8 and HoxD11 in ovarian cancers. *Life Sci.* 80: 1458-1465.
- Suzuki, E., Imoto, I., Pimkhaokham, A., Nakagawa, T., Kamata, N., Kozaki, K.I., Amagasa, T. and Inazawa, J. 2007. PRTFDC1, a possible tumor-suppressor gene, is frequently silenced in oral squamous-cell carcinomas by aberrant promoter hypermethylation. *Oncogene* 26: 7921-7932.

STORAGE

Store at 4° C, ****DO NOT FREEZE****. Stable for one year from the date of shipment. Non-hazardous. No MSDS required.

PROTOCOLS

See our web site at www.scbt.com or our catalog for detailed protocols and support products.

CHROMOSOMAL LOCATION

Genetic locus: PRTFDC1 (human) mapping to 10p12.1.

SOURCE

PRTFDC1 (L-23) is an affinity purified rabbit polyclonal antibody raised against synthetic PRTFDC1 peptide of human origin.

PRODUCT

Each vial contains 50 µg IgG in 500 µl PBS with < 0.1% sodium azide, 0.1% gelatin and < 0.02% sucrose.

APPLICATIONS

PRTFDC1 (L-23) is recommended for detection of PRTFDC1 of human origin by Western Blotting (starting dilution 1:200, dilution range 1:100-1:1000), immunoprecipitation [1-2 µg per 100-500 µg of total protein (1 ml of cell lysate)] and solid phase ELISA (starting dilution 1:30, dilution range 1:30-1:3000).

Suitable for use as control antibody for PRTFDC1 siRNA (h): sc-90611, PRTFDC1 shRNA Plasmid (h): sc-90611-SH and PRTFDC1 shRNA (h) Lentiviral Particles: sc-90611-V.

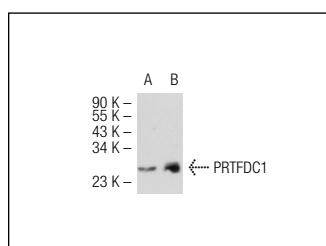
Molecular Weight of PRTFDC1: 26 kDa.

Positive Controls: PRTFDC1 (h): 293 Lysate: sc-110979, SK-N-SH cell lysate: sc-2410 or Hep G2 cell lysate: sc-2227.

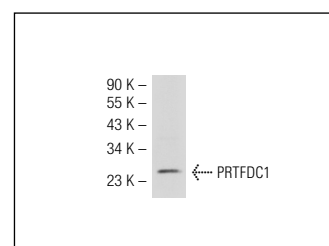
RECOMMENDED SECONDARY REAGENTS

To ensure optimal results, the following support (secondary) reagents are recommended: 1) Western Blotting: use goat anti-rabbit IgG-HRP: sc-2004 (dilution range: 1:2000-1:100,000) or Cruz Marker™ compatible goat anti-rabbit IgG-HRP: sc-2030 (dilution range: 1:2000-1:5000), Cruz Marker™ Molecular Weight Standards: sc-2035, TBS Blotto A Blocking Reagent: sc-2333 and Western Blotting Luminol Reagent: sc-2048. 2) Immunoprecipitation: use Protein A/G PLUS-Agarose: sc-2003 (0.5 ml agarose/2.0 ml).

DATA



PRTFDC1 (L-23): sc-133928. Western blot analysis of PRTFDC1 expression in non-transfected: sc-110760 (A) and human PRTFDC1 transfected: sc-110979 (B) 293 whole cell lysates.



PRTFDC1 (L-23): sc-133928. Western blot analysis of PRTFDC1 expression in SK-N-SH whole cell lysate.

RESEARCH USE

For research use only, not for use in diagnostic procedures.