

PSG9 (O-21): sc-133931

BACKGROUND

PSG9 (pregnancy-specific β -1-glycoprotein 9), also known as PSG7 (pregnancy-specific glycoprotein 7), PS- β -B (pregnancy-specific β -1 glycoprotein B) and PSBG-11 (pregnancy-specific β -1-glycoprotein 11), is a member of the PSG family, a group of closely related secreted glycoproteins that are highly expressed in fetal placental syncytiotrophoblast cells. The members of the PSG protein family all have a characteristic N-terminal domain that is homologous to the immunoglobulin variable region. PSGs become detectable in serum during the first two to three weeks of pregnancy and increase as the pregnancy progresses, eventually representing the most abundant fetal protein in the maternal blood at term. PSGs function to stimulate secretion of TH2-type cytokines from monocytes, and they may also modulate the maternal immune system during pregnancy, thereby protecting the semi-allogenic fetus from rejection. PSGs are commonly expressed in trophoblast tumors. Eleven human PSG proteins (PSG1-PSG11) have been described.

REFERENCES

- Thompson, J., Koumari, R., Wagner, K., Barnert, S., Schleussner, C., Schrewe, H., Zimmermann, W., Müller, G., Schempp, W. and Zaninetta, D. 1990. The human pregnancy-specific glycoprotein genes are tightly linked on the long arm of chromosome 19 and are coordinately expressed. *Biochem. Biophys. Res. Commun.* 167: 848-859.
- Khan, W.N. and Hammarström, S. 1990. Identification of a new carcinoembryonic antigen (CEA) family member in human fetal liver—cloning and sequence determination of pregnancy-specific glycoprotein 7. *Biochem. Biophys. Res. Commun.* 168: 214-225.
- Arakawa, F., Kuroki, M., Misumi, Y., Matsuo, Y. and Matsuoka, Y. 1990. The nucleotide and deduced amino acid sequences of a cDNA encoding a new species of pregnancy-specific β 1-glycoprotein (PS β G). *Biochim. Biophys. Acta* 1048: 303-305.
- Streydio, C., Swillens, S., Georges, M., Szpirer, C. and Vassart, G. 1990. Structure, evolution and chromosomal localization of the human pregnancy-specific β 1 glycoprotein gene family. *Genomics* 6: 579-592.
- Brophy, B.K., MacDonald, R.E., McLenachan, P.A. and Mansfield, B.C. 1992. cDNA sequence of the pregnancy-specific β 1-glycoprotein-11s (PSG-11s). *Biochim. Biophys. Acta* 1131: 119-121.
- McLanachan, P.A., Rutherford, K.J., Beggs, K.T., Sims, S.E. and Mansfield, B.C. 1994. Characterization of the PSG11 gene. *Genomics* 22: 356-363.
- Olsen, A., Teglund, S., Nelson, D., Gordon, L., Copeland, A., Georgescu, A., Carrano, A. and Hammarström, S. 1994. Gene organization of the pregnancy-specific glycoprotein region on human chromosome 19: assembly and analysis of a 700-kb cosmid contig spanning the region. *Genomics* 23: 659-668.
- Beauchemin, N., Draber, P., Dveksler, G., Gold, P., Gray-Owen, S., Grunert, F., Hammarström, S., Holmes, K.V., Karlsson, A., Kuroki, M., Lin, S.H., Lucka, L., Najjar, S.M., Neumaier, M., Obrink, B., Shively, J.E., Skubitz, K.M., Stanners, C.P., Thomas, P., Thompson, J.A., Virji, M., von Kleist, S., Wagener, C., Watt, S. and Zimmermann, W. 1999. Redefined nomenclature for members of the carcinoembryonic antigen family. *Exp. Cell Res.* 252: 243-249.

CHROMOSOMAL LOCATION

Genetic locus: PSG9 (human) mapping to 19q13.31.

SOURCE

PSG9 (O-21) is an affinity purified rabbit polyclonal antibody raised against synthetic PSG9 peptide of human origin.

PRODUCT

Each vial contains 50 μ g IgG in 500 μ l PBS with < 0.1% sodium azide, 0.1% gelatin and < 0.02% sucrose.

APPLICATIONS

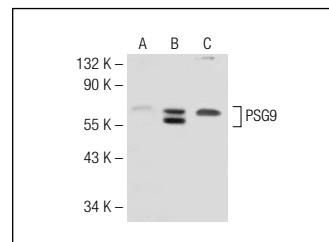
PSG9 (O-21) is recommended for detection of PSG9 of human origin by Western Blotting (starting dilution 1:200, dilution range 1:100-1:1000), immunoprecipitation [1-2 μ g per 100-500 μ g of total protein (1 ml of cell lysate)] and solid phase ELISA (starting dilution 1:30, dilution range 1:30-1:3000).

Suitable for use as control antibody for PSG9 siRNA (h): sc-97336, PSG9 shRNA Plasmid (h): sc-97336-SH and PSG9 shRNA (h) Lentiviral Particles: sc-97336-V.

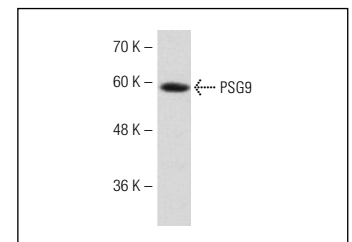
Molecular Weight of PSG9: 48 kDa.

Positive Controls: PSG9 (h): 293T Lysate: sc-174091, Hep G2 cell lysate: sc-2227 or HeLa whole cell lysate: sc-2200.

DATA



PSG9 (O-21): sc-133931. Western blot analysis of PSG9 expression in non-transfected 293T: sc-117752 (A), human PSG9 transfected 293T: sc-174091 (B) and Jurkat (C) whole cell lysates.



PSG9 (O-21): sc-133931. Western blot analysis of PSG9 expression in Hep G2 whole cell lysate.

STORAGE

Store at 4° C, ****DO NOT FREEZE****. Stable for one year from the date of shipment. Non-hazardous. No MSDS required.

RESEARCH USE

For research use only, not for use in diagnostic procedures.

PROTOCOLS

See our web site at www.scbt.com or our catalog for detailed protocols and support products.