

# Raly (Q-21): sc-133941

## BACKGROUND

Raly, also known as hnRNP associated with lethal yellow homolog, autoantigen p542 or heterogeneous nuclear ribonucleoprotein C-like 2 (hnRNPCL2), is a 306 amino acid protein belonging to the RRM HNRPC family. Localized to the nucleus, Raly is thought to be an RNA-binding protein involved in pre-mRNA splicing. Phosphorylated upon DNA damage, Raly has been found to be a sub-unit of the spliceosome C complex. Raly is also an autoantigen that is cross-reactive with an Epstein-Barr virus protein. Raly is expressed at higher levels in pancreas, liver, skeletal muscle, lung, brain, heart and kidney with lower levels found in placenta. Produced by alternative splicing, Raly is expressed as two isoforms.

## REFERENCES

- Vaughan, J.H., Valbracht, J.R., Nguyen, M.D., Handley, H.H., Smith, R.S., Patrick, K. and Rhodes, G.H. 1995. Epstein-Barr virus-induced autoimmune responses. I. Immunoglobulin M autoantibodies to proteins mimicking and not mimicking Epstein-Barr virus nuclear antigen-1. *J. Clin. Invest.* 95: 1306-1315.
- Rhodes, G.H., Valbracht, J.R., Nguyen, M.D. and Vaughan, J.H. 1997. The p542 gene encodes an autoantigen that cross-reacts with EBNA-1 of the Epstein Barr virus and which may be a heterogeneous nuclear ribonucleoprotein. *J. Autoimmun.* 10: 447-454.
- Khreibtukova, I., Kuklin, A., Woychik, R.P. and Michaud, E.J. 1999. Alternative processing of the human and mouse raly genes(1). *Biochim. Biophys. Acta* 1447: 107-112.
- Jurica, M.S., Licklider, L.J., Gygi, S.R., Grigorieff, N. and Moore, M.J. 2002. Purification and characterization of native spliceosomes suitable for three-dimensional structural analysis. *RNA* 8: 426-439.
- Lim, J., Hao, T., Shaw, C., Patel, A.J., Szabó, G., Rual, J.F., Fisk, C.J., Li, N., Smolyar, A., Hill, D.E., Barabási, A.L., Vidal, M. and Zoghbi, H.Y. 2006. A protein-protein interaction network for human inherited ataxias and dis-orders of Purkinje cell degeneration. *Cell* 125: 801-814.
- Olsen, J.V., Blagoev, B., Gnad, F., Macek, B., Kumar, C., Mortensen, P. and Mann, M. 2006. Global, *in vivo*, and site-specific phosphorylation dynamics in signaling networks. *Cell* 127: 635-648.

## CHROMOSOMAL LOCATION

Genetic locus: RALY (human) mapping to 20q11.22.

## SOURCE

Raly (Q-21) is an affinity purified rabbit polyclonal antibody raised against synthetic Raly peptide of human origin.

## PRODUCT

Each vial contains 50 µg IgG in 500 µl PBS with < 0.1% sodium azide, 0.1% gelatin and < 0.02% sucrose.

## RESEARCH USE

For research use only, not for use in diagnostic procedures.

## APPLICATIONS

Raly (Q-21) is recommended for detection of Raly of human origin by Western Blotting (starting dilution 1:200, dilution range 1:100-1:1000), immunoprecipitation [1-2 µg per 100-500 µg of total protein (1 ml of cell lysate)], immunofluorescence (starting dilution 1:50, dilution range 1:50-1:500), immunohistochemistry (including paraffin-embedded sections) (starting dilution 1:50, dilution range 1:50-1:500) and solid phase ELISA (starting dilution 1:30, dilution range 1:30-1:3000).

Suitable for use as control antibody for Raly siRNA (h): sc-76344, Raly shRNA Plasmid (h): sc-76344-SH and Raly shRNA (h) Lentiviral Particles: sc-76344-V.

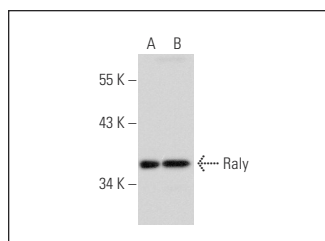
Molecular Weight of Raly: 32 kDa.

Positive Controls: HeLa nuclear extract: sc-2120 or Jurkat nuclear extract: sc-2132.

## RECOMMENDED SECONDARY REAGENTS

To ensure optimal results, the following support (secondary) reagents are recommended: 1) Western Blotting: use goat anti-rabbit IgG-HRP: sc-2004 (dilution range: 1:2000-1:100,000) or Cruz Marker™ compatible goat anti-rabbit IgG-HRP: sc-2030 (dilution range: 1:2000-1:5000), Cruz Marker™ Molecular Weight Standards: sc-2035, TBS Blotto A Blocking Reagent: sc-2333 and Western Blotting Luminol Reagent: sc-2048. 2) Immunoprecipitation: use Protein A/G PLUS-Agarose: sc-2003 (0.5 ml agarose/2.0 ml). 3) Immunofluorescence: use goat anti-rabbit IgG-FITC: sc-2012 (dilution range: 1:100-1:400) or goat anti-rabbit IgG-TR: sc-2780 (dilution range: 1:100-1:400) with UltraCruz™ Mounting Medium: sc-24941. 4) Immunohistochemistry: use ImmunoCruz™: sc-2051 or ABC: sc-2018 rabbit IgG Staining Systems.

## DATA



Raly (Q-21): sc-133941. Western blot analysis of Raly expression in HeLa (A) and Jurkat (B) nuclear extracts.

## STORAGE

Store at 4° C, \*\*DO NOT FREEZE\*\*. Stable for one year from the date of shipment. Non-hazardous. No MSDS required.

## PROTOCOLS

See our web site at [www.scbt.com](http://www.scbt.com) or our catalog for detailed protocols and support products.