

RBM4B (S-23): sc-133948

BACKGROUND

RBM4B (RNA-binding protein 4B), also known as RBM30 (RNA-binding protein 30), is a 359 amino acid protein that localizes to the nucleolus and contains one CCHC-type zinc finger and 2 RRM domains. Expressed ubiquitously, RBM4 interacts with Importin-12 (an association which results in the nuclear import of RBM4) and is thought to play a role in alternative splice site selection during pre-mRNA processing. The gene encoding RBM4B maps to human chromosome 11, which houses over 1,400 genes and comprises nearly 4% of the human genome. Jervell and Lange-Nielsen syndrome, Jacobsen syndrome, Niemann-Pick disease, hereditary angioedema and Smith-Lemli-Opitz syndrome are associated with defects in genes that maps to chromosome 11.

REFERENCES

1. Scherl, A., Coute, Y., Deon, C., Calle, A., Kindbeiter, K., Sanchez, J.C., Greco, A., Hochstrasser, D. and Diaz, J.J. 2002. Functional proteomic analysis of human nucleolus. *Mol. Biol. Cell* 13: 4100-4109.
2. Lai, M.C., Kuo, H.W., Chang, W.C. and Tarn, W.Y. 2003. A novel splicing regulator shares a nuclear import pathway with SR proteins. *EMBO J.* 22: 1359-1369.
3. Markus, M.A. and Morris, B.J. 2006. Lark is the splicing factor RBM4 and exhibits unique subnuclear localization properties. *DNA Cell Biol.* 25: 457-464.
4. Pfuhl, T., Mamiani, A., Dürr, M., Welter, S., Stieber, J., Ankara, J., Liss, M., Dobner, T., Schmitt, A., Falkai, P., Kremmer, E., Jung, V., Barth, S. and Grässer, F.A. 2008. The LARK/RBM4a protein is highly expressed in cerebellum as compared to cerebrum. *Neurosci. Lett.* 444: 11-15.
5. Markus, M.A. and Morris, B.J. 2009. RBM4: a multifunctional RNA-binding protein. *Int. J. Biochem. Cell Biol.* 41: 740-743.
6. Kazan, H., Ray, D., Chan, E.T., Hughes, T.R. and Morris, Q. 2010. RNAcontext: a new method for learning the sequence and structure binding preferences of RNA-binding proteins. *PLoS Comput. Biol.* 6: e1000832.

CHROMOSOMAL LOCATION

Genetic locus: RBM4B (human) mapping to 11q13.2.

SOURCE

RBM4B (S-23) is a Protein A purified rabbit polyclonal antibody raised against synthetic RBM4B peptide of human origin.

PRODUCT

Each vial contains 100 µg IgG in 1.0 ml PBS with < 0.1% sodium azide, 0.1% gelatin and < 0.02% sucrose.

STORAGE

Store at 4° C, ****DO NOT FREEZE****. Stable for one year from the date of shipment. Non-hazardous. No MSDS required.

RESEARCH USE

For research use only, not for use in diagnostic procedures.

APPLICATIONS

RBM4B (S-23) is recommended for detection of RBM4B of human origin by Western Blotting (starting dilution 1:200, dilution range 1:100-1:1000), immunoprecipitation [1-2 µg per 100-500 µg of total protein (1 ml of cell lysate)], immunofluorescence (starting dilution 1:50, dilution range 1:50-1:500), immunohistochemistry (including paraffin-embedded sections) (starting dilution 1:50, dilution range 1:50-1:500) and solid phase ELISA (starting dilution 1:30, dilution range 1:30-1:3000).

Suitable for use as control antibody for RBM4B siRNA (h): sc-106490, RBM4B shRNA Plasmid (h): sc-106490-SH and RBM4B shRNA (h) Lentiviral Particles: sc-106490-V.

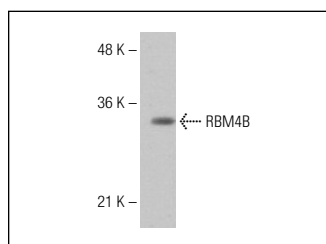
Molecular Weight of RBM4B: 40 kDa.

Positive Controls: Jurkat whole cell lysate: sc-2204.

RECOMMENDED SECONDARY REAGENTS

To ensure optimal results, the following support (secondary) reagents are recommended: 1) Western Blotting: use goat anti-rabbit IgG-HRP: sc-2004 (dilution range: 1:2000-1:100,000) or Cruz Marker™ compatible goat anti-rabbit IgG-HRP: sc-2030 (dilution range: 1:2000-1:5000), Cruz Marker™ Molecular Weight Standards: sc-2035, TBS Blotto A Blocking Reagent: sc-2333 and Western Blotting Luminol Reagent: sc-2048. 2) Immunoprecipitation: use Protein A/G PLUS-Agarose: sc-2003 (0.5 ml agarose/2.0 ml). 3) Immunofluorescence: use goat anti-rabbit IgG-FITC: sc-2012 (dilution range: 1:100-1:400) or goat anti-rabbit IgG-TR: sc-2780 (dilution range: 1:100-1:400) with UltraCruz™ Mounting Medium: sc-24941. 4) Immunohistochemistry: use ImmunoCruz™: sc-2051 or ABC: sc-2018 rabbit IgG Staining Systems.

DATA



RBM4B (S-23): sc-133948. Western blot analysis of RBM4B expression in Jurkat whole cell lysate.

PROTOCOLS

See our web site at www.scbt.com or our catalog for detailed protocols and support products.