

# RBPMS (S-25): sc-133950

## BACKGROUND

RBPMS (RNA binding protein with multiple splicing), also known as HERMES, is a 196 amino acid protein that contains one RRM (RNA recognition motif) domain and belongs to the RRM family of RNA-binding proteins. Expressed ubiquitously, RBPMS exists as multiple alternatively spliced isoforms and is thought to bind RNA, possibly playing a role in RNA-related events, such as transcription and translation. The gene encoding RBPMS maps to human chromosome 8, which consists of nearly 146 million base pairs, houses more than 800 genes and is associated with a variety of diseases and malignancies. Schizophrenia, bipolar disorder, Trisomy 8, Pfeiffer syndrome, congenital hypothyroidism, Waardenburg syndrome and some leukemias and lymphomas are thought to occur as a result of defects in specific genes that map to chromosome 8.

## REFERENCES

1. Shimamoto, A., et al. 1996. A unique human gene that spans over 230 kb in the human chromosome 8p11-12 and codes multiple family proteins sharing RNA-binding motifs. *Proc. Natl. Acad. Sci. USA* 93: 10913-10917.
2. Gerber, W.V., et al. 1999. The RNA-binding protein gene, hermes, is expressed at high levels in the developing heart. *Mech. Dev.* 80: 77-86.

## CHROMOSOMAL LOCATION

Genetic locus: RBPMS (human) mapping to 8p12; Rbpms (mouse) mapping to 8 A4.

## SOURCE

RBPMS (S-25) is a Protein A purified rabbit polyclonal antibody raised against a peptide mapping at the N-terminus of RBPMS of human origin.

## PRODUCT

Each vial contains 100 µg IgG in 1.0 ml of PBS with < 0.1% sodium azide, 0.1% gelatin and < 0.02% sucrose.

## APPLICATIONS

RBPMS (S-25) is recommended for detection of RBPMS of mouse, rat and human origin by Western Blotting (starting dilution 1:200, dilution range 1:100-1:1000), immunoprecipitation [1-2 µg per 100-500 µg of total protein (1 ml of cell lysate)], immunofluorescence (starting dilution 1:50, dilution range 1:50-1:500), immunohistochemistry (including paraffin-embedded sections) (starting dilution 1:50, dilution range 1:50-1:500) and solid phase ELISA (starting dilution 1:30, dilution range 1:30-1:3000).

RBPMS (S-25) is also recommended for detection of RBPMS in additional species, including equine, bovine and canine.

Suitable for use as control antibody for RBPMS siRNA (h): sc-77460, RBPMS siRNA (m): sc-152764, RBPMS shRNA Plasmid (h): sc-77460-SH, RBPMS shRNA Plasmid (m): sc-152764-SH, RBPMS shRNA (h) Lentiviral Particles: sc-77460-V and RBPMS shRNA (m) Lentiviral Particles: sc-152764-V.

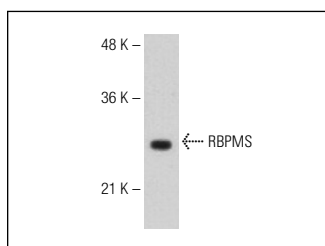
Molecular Weight of RBPMS isoforms: 24/22/17/16 kDa.

Positive Controls: Hep G2 cell lysate: sc-2227.

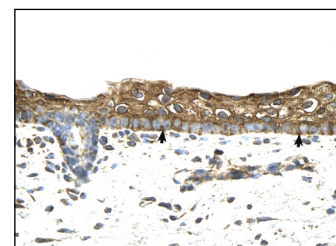
## RECOMMENDED SECONDARY REAGENTS

To ensure optimal results, the following support (secondary) reagents are recommended: 1) Western Blotting: use goat anti-rabbit IgG-HRP: sc-2004 (dilution range: 1:2000-1:100,000) or Cruz Marker™ compatible goat anti-rabbit IgG-HRP: sc-2030 (dilution range: 1:2000-1:5000), Cruz Marker™ Molecular Weight Standards: sc-2035, TBS Blotto A Blocking Reagent: sc-2333 and Western Blotting Luminol Reagent: sc-2048. 2) Immunoprecipitation: use Protein A/G PLUS-Agarose: sc-2003 (0.5 ml agarose/2.0 ml). 3) Immunofluorescence: use goat anti-rabbit IgG-FITC: sc-2012 (dilution range: 1:100-1:400) or goat anti-rabbit IgG-TR: sc-2780 (dilution range: 1:100-1:400) with UltraCruz™ Mounting Medium: sc-24941. 4) Immunohistochemistry: use ImmunoCruz™: sc-2051 or ABC: sc-2018 rabbit IgG Staining Systems.

## DATA



RBPMS (S-25): sc-133950. Western blot analysis of RBPMS expression in Hep G2 whole cell lysate.



RBPMS (S-25): sc-133950. Immunoperoxidase staining of formalin-fixed, paraffin-embedded human skin tissue showing cytoplasmic localization.

## STORAGE

Store at 4° C, **\*\*DO NOT FREEZE\*\***. Stable for one year from the date of shipment. Non-hazardous. No MSDS required.

## RESEARCH USE

For research use only, not for use in diagnostic procedures.

## PROTOCOLS

See our web site at [www.scbt.com](http://www.scbt.com) or our catalog for detailed protocols and support products.

**MONOS**  
Satisfaction  
Guaranteed

Try **RBPMS (1C12): sc-293285**, our highly recommended monoclonal alternative to RBPMS (S-25).