

Rfp2 (T-23): sc-133953

BACKGROUND

The tripartite motif (TRIM) family of proteins are characterized by a conserved TRIM domain that includes a coiled-coil region, a B box-type zinc finger, one RING finger and three zinc-binding domains. Rfp2 (Ret finger protein 2), also known as TRIM13 (tripartite motif-containing 13), CAR, RNF77 or LEU5, is a 407 amino acid protein that belongs to the TRIM protein family and contains one B box-type zinc finger and one RING-type zinc finger. Existing as two alternatively spliced isoforms, designated α and β , Rfp2 is thought to act as a tumor suppressor that, when defective, may be involved in the development and progression of B-cell chronic lymphocytic leukemia. Additionally, Rfp2 may function as an E3 ubiquitin ligase that is involved in protein degradation pathways related to the ER-associated degradation (ERAD) pathway.

REFERENCES

- Liu, Y., et al. 1993. Chronic lymphocytic leukemia cells with allelic deletions at 13q14 commonly have one intact RB1 gene: evidence for a role of an adjacent locus. *Proc. Natl. Acad. Sci. USA* 90: 8697-8701.
- Liu, Y., et al. 1995. 13q deletions in lymphoid malignancies. *Blood* 86: 1911-1915.
- Kapanadze, B., et al. 1998. A cosmid and cDNA fine physical map of a human chromosome 13q14 region frequently lost in B-cell chronic lymphocytic leukemia and identification of a new putative tumor suppressor gene, Leu5. *FEBS Lett.* 426: 266-270.
- Reymond, A., et al. 2001. The tripartite motif family identifies cell compartments. *EMBO J.* 20: 2140-2151.
- van Everdink, W.J., et al. 2003. Rfp2, c13ORF1, and FAM10A4 are the most likely tumor suppressor gene candidates for B-cell chronic lymphocytic leukemia. *Cancer Genet. Cytogenet.* 146: 48-57.
- Corcoran, M.M., et al. 2004. DLEU2 encodes an antisense RNA for the putative bicistronic RFP2/LEU5 gene in humans and mouse. *Genes Chromosomes Cancer* 40: 285-297.
- Skoblov, M., et al. 2006. Human Rfp2 gene promoter: unique structure and unusual strength. *Biochem. Biophys. Res. Commun.* 342: 859-866.
- Lerner, M., et al. 2007. The RBCC gene Rfp2 (Leu5) encodes a novel transmembrane E3 ubiquitin ligase involved in ERAD. *Mol. Biol. Cell* 18: 1670-1682.

CHROMOSOMAL LOCATION

Genetic locus: TRIM13 (human) mapping to 13q14.3; Trim13 (mouse) mapping to 14 D1.

SOURCE

Rfp2 (T-23) is a Protein A purified rabbit polyclonal antibody raised against synthetic Rfp2 peptide of human origin.

PRODUCT

Each vial contains 100 μ g IgG in 1.0 ml PBS with < 0.1% sodium azide, 0.1% gelatin and < 0.02% sucrose.

APPLICATIONS

Rfp2 (T-23) is recommended for detection of Rfp2 of mouse, rat and human origin by Western Blotting (starting dilution 1:200, dilution range 1:100-1:1000), immunoprecipitation [1-2 μ g per 100-500 μ g of total protein (1 ml of cell lysate)] and solid phase ELISA (starting dilution 1:30, dilution range 1:30-1:3000).

Suitable for use as control antibody for Rfp2 siRNA (h): sc-76392, Rfp2 siRNA (m): sc-76393, Rfp2 shRNA Plasmid (h): sc-76392-SH, Rfp2 shRNA Plasmid (m): sc-76393-SH, Rfp2 shRNA (h) Lentiviral Particles: sc-76392-V and Rfp2 shRNA (m) Lentiviral Particles: sc-76393-V.

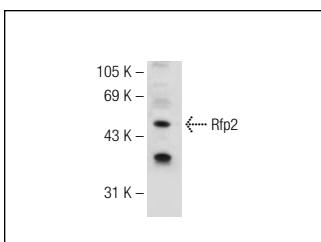
Molecular Weight of Rfp2: 47 kDa.

Positive Controls: IMR-32 cell lysate: sc-2409, SK-N-MC cell lysate: sc-2237 or Jurkat whole cell lysate: sc-2204.

RECOMMENDED SECONDARY REAGENTS

To ensure optimal results, the following support (secondary) reagents are recommended: 1) Western Blotting: use goat anti-rabbit IgG-HRP: sc-2004 (dilution range: 1:2000-1:100,000) or Cruz Marker™ compatible goat anti-rabbit IgG-HRP: sc-2030 (dilution range: 1:2000-1:5000), Cruz Marker™ Molecular Weight Standards: sc-2035, TBS Blotto A Blocking Reagent: sc-2333 and Western Blotting Luminol Reagent: sc-2048. 2) Immunoprecipitation: use Protein A/G PLUS-Agarose: sc-2003 (0.5 ml agarose/2.0 ml).

DATA



Rfp2 (T-23): sc-133953. Western blot analysis of Rfp2 expression in IMR-32 whole cell lysate.

STORAGE

Store at 4° C, **DO NOT FREEZE**. Stable for one year from the date of shipment. Non-hazardous. No MSDS required.

RESEARCH USE

For research use only, not for use in diagnostic procedures.


 MONOS
Satisfaction
Guaranteed

Try **Rfp2 (E-6): sc-393257** or **Rfp2 (A-2): sc-398129**, our highly recommended monoclonal alternatives to Rfp2 (T-23).