

# Ribosomal Protein L8 (V-21): sc-133961

## BACKGROUND

Ribosomes, the organelles that catalyze protein synthesis, are composed of a small subunit (40S) and a large subunit (60S) that consist of over 80 distinct ribosomal proteins. Mammalian ribosomal proteins are encoded by multigene families that contain processed pseudogenes and one functional intron-containing gene within their coding regions. Ribosomal Protein L8, also known as RPL8, is a 257 amino acid protein that localizes to the cytoplasm and exists as a component of the 60S subunit where it is thought to play a role in aminoacyl-tRNA binding, specifically at the ribosomal subunit interface. Ribosomal Protein L8 exists as multiple processed pseudogenes that are scattered throughout the genome. The gene encoding Ribosomal Protein L8 maps to human chromosome 8, which consists of nearly 146 million base pairs, houses more than 800 genes and is associated with a variety of diseases and malignancies.

## REFERENCES

- Hanes, J., et al. 1993. Characterization by cDNA cloning of the mRNA of human ribosomal protein L8. *Biochem. Biophys. Res. Commun.* 197: 1223-1228.
- Wool, I.G., et al. 1995. Structure and evolution of mammalian ribosomal proteins. *Biochem. Cell Biol.* 73: 933-947.
- Kenmochi, N., et al. 1998. A map of 75 human ribosomal protein genes. *Genome Res.* 8: 509-523.
- Online Mendelian Inheritance in Man, OMIM™. 1999. Johns Hopkins University, Baltimore, MD. MIM Number: 604177. World Wide Web URL: <http://www.ncbi.nlm.nih.gov/omim/>
- Yoshihama, M., et al. 2002. The human ribosomal protein genes: sequencing and comparative analysis of 73 genes. *Genome Res.* 12: 379-390.

## CHROMOSOMAL LOCATION

Genetic locus: RPL8 (human) mapping to 8q24.3; Rpl8 (mouse) mapping to 15 D3.

## SOURCE

Ribosomal Protein L8 (V-21) is a Protein A purified rabbit polyclonal antibody raised against synthetic Ribosomal Protein L8 peptide of human origin.

## PRODUCT

Each vial contains 100 µg IgG in 1.0 ml PBS with < 0.1% sodium azide, 0.1% gelatin and < 0.02% sucrose.

## STORAGE

Store at 4° C, **\*\*DO NOT FREEZE\*\***. Stable for one year from the date of shipment. Non-hazardous. No MSDS required.

## PROTOCOLS

See our web site at [www.scbt.com](http://www.scbt.com) or our catalog for detailed protocols and support products.

## APPLICATIONS

Ribosomal Protein L8 (V-21) is recommended for detection of Ribosomal Protein L8 of mouse, rat and human origin by Western Blotting (starting dilution 1:200, dilution range 1:100-1:1000), immunoprecipitation [1-2 µg per 100-500 µg of total protein (1 ml of cell lysate)], immunofluorescence (starting dilution 1:50, dilution range 1:50-1:500), immunohistochemistry (including paraffin-embedded sections) (starting dilution 1:50, dilution range 1:50-1:500) and solid phase ELISA (starting dilution 1:30, dilution range 1:30-1:3000).

Suitable for use as control antibody for Ribosomal Protein L8 siRNA (h): sc-77802, Ribosomal Protein L8 siRNA (m): sc-152927, Ribosomal Protein L8 shRNA Plasmid (h): sc-77802-SH, Ribosomal Protein L8 shRNA Plasmid (m): sc-152927-SH, Ribosomal Protein L8 shRNA (h) Lentiviral Particles: sc-77802-V and Ribosomal Protein L8 shRNA (m) Lentiviral Particles: sc-152927-V.

Molecular Weight of (predicted) Ribosomal Protein L8: 28 kDa.

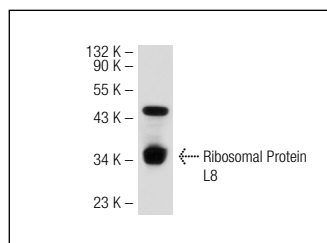
Molecular Weight of (observed) Ribosomal Protein L8: 34 kDa.

Positive Controls: Hep G2 cell lysate: sc-2227, Jurkat whole cell lysate: sc-2204 or Jurkat nuclear extract: sc-2132.

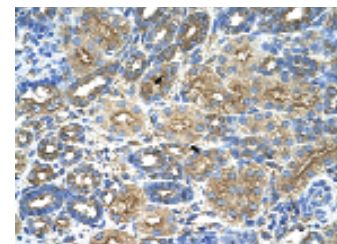
## RECOMMENDED SECONDARY REAGENTS

To ensure optimal results, the following support (secondary) reagents are recommended: 1) Western Blotting: use goat anti-rabbit IgG-HRP: sc-2004 (dilution range: 1:2000-1:100,000) or Cruz Marker™ compatible goat anti-rabbit IgG-HRP: sc-2030 (dilution range: 1:2000-1:5000), Cruz Marker™ Molecular Weight Standards: sc-2035, TBS Blotto A Blocking Reagent: sc-2333 and Western Blotting Luminol Reagent: sc-2048. 2) Immunoprecipitation: use Protein A/G PLUS-Agarose: sc-2003 (0.5 ml agarose/2.0 ml). 3) Immunofluorescence: use goat anti-rabbit IgG-FITC: sc-2012 (dilution range: 1:100-1:400) or goat anti-rabbit IgG-TR: sc-2780 (dilution range: 1:100-1:400) with UltraCruz™ Mounting Medium: sc-24941. 4) Immunohistochemistry: use ImmunoCruz™: sc-2051 or ABC: sc-2018 rabbit IgG Staining Systems.

## DATA



Ribosomal Protein L8 (V-21): sc-133961. Western blot analysis of Ribosomal Protein L8 expression in Jurkat whole cell lysate.



Ribosomal Protein L8 (V-21): sc-133961. Immunoperoxidase staining of formalin-fixed, paraffin-embedded human kidney tissue showing cytoplasmic localization.

## RESEARCH USE

For research use only, not for use in diagnostic procedures.