

SDF-2 (A-25): sc-133990

BACKGROUND

Secretory proteins, such as enzymes, hormones and toxins, are exported by the cell into either ducts (exocrine) or the bloodstream (endocrine). Once secreted, these proteins have a variety of functions within the cell and are involved in signaling pathways, immune responses and hormone regulation. SDF-2 (stromal cell-derived factor-2) is a 211 amino acid protein that contains three MIR domains. Expressed throughout the body, SDF-2 shares 92% sequence similarity with its mouse counterpart and is thought to function as a secretory protein. Due to the high similarity between SDF-2 and its corresponding mouse protein, SDF-2 may have a conserved function among mammals.

REFERENCES

1. Hamada, T., et al. 1996. Isolation and characterization of a novel secretory protein, stromal cell-derived factor-2 (SDF-2) using the signal sequence trap method. *Gene* 176: 211-214.
2. Wang, N., et al. 1999. SDF-2 induction of terminal differentiation in *Dictyostelium discoideum* is mediated by the membrane-spanning sensor kinase DhkA. *Mol. Cell. Biol.* 19: 4750-4756.

CHROMOSOMAL LOCATION

Genetic locus: SDF2 (human) mapping to 17q11.2; Sdf2 (mouse) mapping to 11 B5.

SOURCE

SDF-2 (A-25) is a Protein A purified rabbit polyclonal antibody raised against a peptide mapping within an internal region of SDF-2 of human origin.

PRODUCT

Each vial contains 100 µg IgG in 1.0 ml PBS with < 0.1% sodium azide, 0.1% gelatin and < 0.02% sucrose.

APPLICATIONS

SDF-2 (A-25) is recommended for detection of SDF-2 of mouse, rat and human origin by Western Blotting (starting dilution 1:200, dilution range 1:100-1:1000), immunoprecipitation [1-2 µg per 100-500 µg of total protein (1 ml of cell lysate)], immunofluorescence (starting dilution 1:50, dilution range 1:50-1:500), immunohistochemistry (including paraffin-embedded sections) (starting dilution 1:50, dilution range 1:50-1:500) and solid phase ELISA (starting dilution 1:30, dilution range 1:30-1:3000).

SDF-2 (A-25) is also recommended for detection of SDF-2 in additional species, including equine, bovine and canine.

Suitable for use as control antibody for SDF-2 siRNA (h): sc-94163, SDF-2 siRNA (m): sc-153286, SDF-2 shRNA Plasmid (h): sc-94163-SH, SDF-2 shRNA Plasmid (m): sc-153286-SH, SDF-2 shRNA (h) Lentiviral Particles: sc-94163-V and SDF-2 shRNA (m) Lentiviral Particles: sc-153286-V.

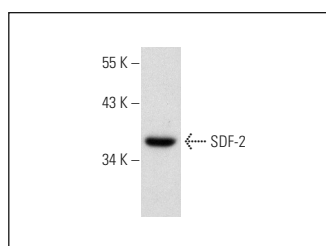
Molecular Weight of SDF-2: 23 kDa.

Positive Controls: WI-38 whole cell lysate: sc-364260, Hep G2 cell lysate: sc-2227 or HeLa whole cell lysate: sc-2200.

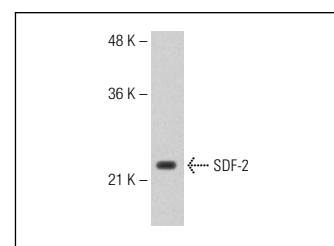
RECOMMENDED SECONDARY REAGENTS

To ensure optimal results, the following support (secondary) reagents are recommended: 1) Western Blotting: use goat anti-rabbit IgG-HRP: sc-2004 (dilution range: 1:2000-1:100,000) or Cruz Marker™ compatible goat anti-rabbit IgG-HRP: sc-2030 (dilution range: 1:2000-1:5000), Cruz Marker™ Molecular Weight Standards: sc-2035, TBS Blotto A Blocking Reagent: sc-2333 and Western Blotting Luminol Reagent: sc-2048. 2) Immunoprecipitation: use Protein A/G PLUS-Agarose: sc-2003 (0.5 ml agarose/2.0 ml). 3) Immunofluorescence: use goat anti-rabbit IgG-FITC: sc-2012 (dilution range: 1:100-1:400) or goat anti-rabbit IgG-TR: sc-2780 (dilution range: 1:100-1:400) with UltraCruz™ Mounting Medium: sc-24941. 4) Immunohistochemistry: use ImmunoCruz™: sc-2051 or ABC: sc-2018 rabbit IgG Staining Systems.

DATA



SDF-2 (A-25): sc-133990. Western blot analysis of SDF-2 expression in WI-38 whole cell lysate.



SDF-2 (A-25): sc-133990. Western blot analysis of SDF-2 expression in Hep G2 whole cell lysate.

STORAGE

Store at 4° C, **DO NOT FREEZE**. Stable for one year from the date of shipment. Non-hazardous. No MSDS required.

RESEARCH USE

For research use only, not for use in diagnostic procedures.

PROTOCOLS

See our web site at www.scbt.com or our catalog for detailed protocols and support products.

MONOS
Satisfaction
Guaranteed

Try **SDF-2 (J-22): sc-100660**, our highly recommended monoclonal alternative to SDF-2 (A-25).