

SETD4 (B-23): sc-133993

BACKGROUND

SETD4 (SET domain-containing protein 4) is a 440 amino acid protein that contains one SET domain and is expressed as three isoforms produced by alternative splicing. The gene that encodes SETD4 maps to human chromosome 21. The smallest of the human chromosomes, 21 makes up about 1.5% of the human genome. Chromosome 21 contains nearly 300 genes and 47 million base pairs. Down syndrome, also known as trisomy 21, is the disease most commonly associated with chromosome 21. Alzheimer's disease, Jervell and Lange-Nielsen syndrome and amyotrophic lateral sclerosis are also associated with chromosome 21. Translocations are found to occur between chromosome 21 and 8, and chromosome 21 and 12, in certain leukemias.

REFERENCES

1. Tesson, F., Donger, C., Denjoy, I., Berthet, M., Bennaceur, M., Petit, C., Coumel, P., Schwartz, K. and Guicheney, P. 1996. Exclusion of KCNE1 (IsK) as a candidate gene for Jervell and Lange-Nielsen syndrome. *J. Mol. Cell. Cardiol.* 28: 2051-2055.
2. Tyson, J., Tranebjaerg, L., Bellman, S., Wren, C., Taylor, J.F., Bathen, J., Aslaksen, B., Sørland, S.J., Lund, O., Malcolm, S., Pembrey, M., Bhattacharya, S. and Bitner-Glindzic, M. 1997. IsK and KvLQT1: mutation in either of the two subunits of the slow component of the delayed rectifier potassium channel can cause Jervell and Lange-Nielsen syndrome. *Hum. Mol. Genet.* 6: 2179-2185.
3. Müller, S., Stanyon, R., Finelli, P., Archidiacono, N. and Wienberg, J. 2000. Molecular cytogenetic dissection of human chromosomes 3 and 21 evolution. *Proc. Natl. Acad. Sci. USA* 97: 206-211.
4. Mao, R., Wang, X., Spitznagel, E.L.Jr., Frelin, L.P., Ting, J.C., Ding, H., Kim, J.W., Ruczinski, I., Downey, T.J. and Pevsner, J. 2005. Primary and secondary transcriptional effects in the developing human Down syndrome brain and heart. *Genome Biol.* 6: R107.
5. Robakis, N.K. 2006. The discovery and mapping to chromosome 21 of the Alzheimer's amyloid gene: history revised. *J. Alzheimers Dis.* 10: 453-455.
6. Sun, X., He, G. and Song, W. 2006. BACE2, as a novel APP θ -secretase, is not responsible for the pathogenesis of Alzheimer's disease in Down syndrome. *FASEB J.* 20: 1369-1376.
7. Peterson, L.F., Boyapati, A., Ahn, E.Y., Biggs, J.R., Okumura, A.J., Lo, M.C., Yan, M. and Zhang, D.E. 2007. Acute myeloid leukemia with the 8q22;21q22 translocation: secondary mutational events and alternative t(8;21) transcripts. *Blood* 110: 799-805.

CHROMOSOMAL LOCATION

Genetic locus: SETD4 (human) mapping to 21q22.12; Setd4 (mouse) mapping to 16 C4.

SOURCE

SETD4 (B-23) is an affinity purified rabbit polyclonal antibody raised against synthetic SETD4 peptide of human origin.

PRODUCT

Each vial contains 50 μ g IgG in 500 μ l PBS with < 0.1% sodium azide, 0.1% gelatin and < 0.02% sucrose.

APPLICATIONS

SETD4 (B-23) is recommended for detection of SETD4 of mouse and human origin by Western Blotting (starting dilution 1:200, dilution range 1:100-1:1000), immunoprecipitation [1-2 μ g per 100-500 μ g of total protein (1 ml of cell lysate)] and solid phase ELISA (starting dilution 1:30, dilution range 1:30-1:3000).

Suitable for use as control antibody for SETD4 siRNA (h): sc-91446, SETD4 siRNA (m): sc-153385, SETD4 shRNA Plasmid (h): sc-91446-SH, SETD4 shRNA Plasmid (m): sc-153385-SH, SETD4 shRNA (h) Lentiviral Particles: sc-91446-V and SETD4 shRNA (m) Lentiviral Particles: sc-153385-V.

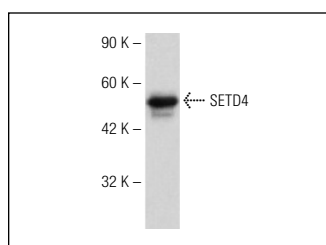
Molecular Weight of SETD4: 44 kDa.

Positive Controls: HL-60 whole cell lysate: sc-2209, K-562 whole cell lysate: sc-2203 or Hep G2 cell lysate: sc-2227.

RECOMMENDED SECONDARY REAGENTS

To ensure optimal results, the following support (secondary) reagents are recommended: 1) Western blotting: use goat anti-rabbit IgG-HRP: sc-2004 (dilution range: 1:2000-1:100,000) or Cruz Marker[™] compatible goat anti-rabbit IgG-HRP: sc-2030 (dilution range: 1:2000-1:5000), Cruz Marker[™] Molecular Weight Standards: sc-2035, TBS Blotto A Blocking Reagent: sc-2333 and Western Blotting Luminol Reagent: sc-2048. 2) Immunoprecipitation: use Protein A/G PLUS-Agarose: sc-2003 (0.5 ml agarose/2.0 ml).

DATA



SETD4 (B-23): sc-133993. Western blot analysis of SETD4 expression in Hep G2 whole cell lysate.

STORAGE

Store at 4° C, ****DO NOT FREEZE****. Stable for one year from the date of shipment. Non-hazardous. No MSDS required.

RESEARCH USE

For research use only, not for use in diagnostic procedures.

PROTOCOLS

See our web site at www.scbt.com or our catalog for detailed protocols and support products.