

SLC25A38 (F-21): sc-134006

BACKGROUND

SLC25A38 (solute carrier family 25, member 38) is a 304 amino acid multi-pass membrane protein that localizes to the inner mitochondrial membrane and contains 3 solcar repeats. SLC25A38 is thought to function as a mitochondrial carrier protein that is encoded by a gene which maps to human chromosome 3. Chromosome 3 houses over 1,100 genes, including a chemokine receptor (CKR) gene cluster and a variety of human cancer-related gene loci. Key tumor suppressing genes on chromosome 3 include those that encode the apoptosis mediator RASSF1, the cell migration regulator HYAL1 and the angiogenesis suppressor SEMA3B. Marfan syndrome, porphyria, von Hippel-Lindau syndrome, osteogenesis imperfecta and Charcot-Marie-Tooth disease are a few of the numerous genetic diseases associated with chromosome 3. Defects in the gene encoding SLC25A38 are the cause of nonsyndromic autosomal recessive congenital sideroblastic anemia.

REFERENCES

- Braga, E.A., Kashuba, V.I., Maliukova, A.V., Loginov, V.I., Senchenko, V.N., Bazov, I.V., Kiselev, L.L. and Zabarovskii, E.R. 2003. New tumor suppressor genes in hot spots of human chromosome 3: new methods of identification. *Mol. Biol.* 37: 194-211.
- Tsend-Ayush, E., Grützner, F., Yue, Y., Grossmann, B., Hänsel, U., Sudbrak, R. and Haaf, T. 2004. Plasticity of human chromosome 3 during primate evolution. *Genomics* 83: 193-202.
- Yue, Y., Grossmann, B., Ferguson-Smith, M., Yang, F. and Haaf, T. 2005. Comparative cytogenetics of human chromosome 3q21.3 reveals a hot spot for ectopic recombination in hominoid evolution. *Genomics* 85: 36-47.
- Darai, E., Kost-Alimova, M., Kiss, H., Kansoul, H., Klein, G. and Imreh, S. 2005. Evolutionarily plastic regions at human 3p21.3 coincide with tumor breakpoints identified by the "elimination test". *Genomics* 86: 1-12.
- Haitina, T., Lindblom, J., Renström, T. and Fredriksson, R. 2006. Fourteen novel human members of mitochondrial solute carrier family 25 (SLC25) widely expressed in the central nervous system. *Genomics* 88: 779-790.
- Online Mendelian Inheritance in Man, OMIM[™]. 2007. Johns Hopkins University, Baltimore, MD. MIM Number: 610819. World Wide Web URL: <http://www.ncbi.nlm.nih.gov/omim/>
- Guernsey, D.L., Jiang, H., Campagna, D.R., Evans, S.C., Ferguson, M., Kellogg, M.D., Lachance, M., Matsuoka, M., Nightingale, M., Rideout, A., Saint-Amant, L., Schmidt, P.J., Orr, A., Bottomley, S.S., Fleming, M.D., Ludman, M., Dyack, S., Fernandez, C.V. and Samuels, M.E. 2009. Mutations in mitochondrial carrier family gene SLC25A38 cause nonsyndromic autosomal recessive congenital sideroblastic anemia. *Nat. Genet.* 41: 651-653.

CHROMOSOMAL LOCATION

Genetic locus: SLC25A38 (human) mapping to 3p22.1; Slc25a38 (mouse) mapping to 9 F4.

SOURCE

SLC25A38 (F-21) is an affinity purified rabbit polyclonal antibody raised against synthetic SLC25A38 peptide of human origin.

PRODUCT

Each vial contains 50 µg IgG in 500 µl PBS with < 0.1% sodium azide, 0.1% gelatin and < 0.02% sucrose.

APPLICATIONS

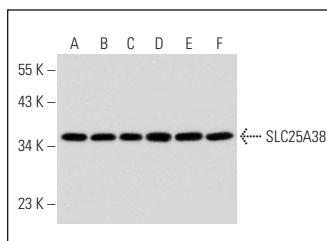
SLC25A38 (F-21) is recommended for detection of SLC25A38 of mouse, rat and human origin by Western Blotting (starting dilution 1:200, dilution range 1:100-1:1000), immunoprecipitation [1-2 µg per 100-500 µg of total protein (1 ml of cell lysate)], immunofluorescence (starting dilution 1:50, dilution range 1:50-1:500), immunohistochemistry (including paraffin-embedded sections) (starting dilution 1:50, dilution range 1:50-1:500) and solid phase ELISA (starting dilution 1:30, dilution range 1:30-1:3000).

Suitable for use as control antibody for SLC25A38 siRNA (h): sc-78287, SLC25A38 siRNA (m): sc-153515, SLC25A38 shRNA Plasmid (h): sc-78287-SH, SLC25A38 shRNA Plasmid (m): sc-153515-SH, SLC25A38 shRNA (h) Lentiviral Particles: sc-78287-V and SLC25A38 shRNA (m) Lentiviral Particles: sc-153515-V.

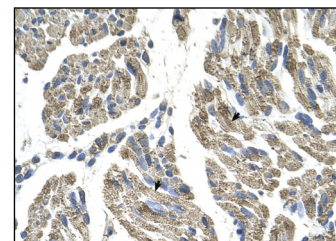
Molecular Weight of SLC25A38: 34 kDa.

Positive Controls: HeLa whole cell lysate: sc-2200, K-562 whole cell lysate: sc-2203 or CCRF-CEM cell lysate: sc-2225.

DATA



SLC25A38 (F-21): sc-134006. Western blot analysis of SLC25A38 expression in HEL 92.1.7 (A), CCRF-CEM (B), TF-1 (C), HeLa (D), K-562 (E) and Daudi (F) whole cell lysates.



SLC25A38 (F-21): sc-134006. Immunoperoxidase staining of formalin-fixed, paraffin-embedded human muscle tissue showing cytoplasmic localization.

STORAGE

Store at 4° C, ****DO NOT FREEZE****. Stable for one year from the date of shipment. Non-hazardous. No MSDS required.

RESEARCH USE

For research use only, not for use in diagnostic procedures.

PROTOCOLS

See our web site at www.scbt.com or our catalog for detailed protocols and support products.