

SLC35F2 (F-23): sc-134008

BACKGROUND

SLC35F2 (solute carrier family 35, member F2), also known as HSN0V1, is a 374 amino acid multi-pass membrane protein that belongs to the SLC35F solute transporter family. Existing as three alternatively spliced isoforms, SLC35F2 functions as a putative solute transporter. The gene encoding SLC35F2 maps to human chromosome 11, which consists of approximately 135 million base pairs and 1,400 genes. Comprising around 4% of human genomic DNA, chromosome 11 is considered a gene and disease association dense chromosome. Jervell and Lange-Nielsen syndrome, Jacobsen syndrome, Niemann-Pick disease, hereditary angioedema and Smith-Lemli-Opitz syndrome are also associated with defects in chromosome 11.

REFERENCES

1. Fabiani, J.E., Avigliano, A., Dupont, J.C. and Fabiana, J.E. 2000. Hereditary angioedema. Long-term follow-up of 88 patients. Experience of the Argentine Allergy and Immunology Institute. *Allergol. Immunopathol.* 28: 267-271.
2. Jira, P.E., Waterham, H.R., Wanders, R.J., Smeitink, J.A., Sengers, R.C. and Wevers, R.A. 2003. Smith-Lemli-Opitz syndrome and the DHCR7 gene. *Ann. Hum. Genet.* 67: 269-280.
3. Schuchman, E.H. 2007. The pathogenesis and treatment of acid sphingomyelinase-deficient Niemann-Pick disease. *J. Inher. Metab. Dis.* 30: 654-663.
4. Siem, G., Früh, A., Leren, T.P., Heimdal, K., Teig, E. and Harris, S. 2008. Jervell and Lange-Nielsen syndrome in Norwegian children: aspects around cochlear implantation, hearing, and balance. *Ear Hear.* 29: 261-269.
5. Bhuiyan, Z.A., Momenah, T.S., Amin, A.S., Al-Khadra, A.S., Alders, M., Wilde, A.A. and Mannens, M.M. 2008. An intronic mutation leading to incomplete skipping of exon-2 in KCNQ1 rescues hearing in Jervell and Lange-Nielsen syndrome. *Prog. Biophys. Mol. Biol.* 98: 319-327.
6. Coldren, C.D., Lai, Z., Shragg, P., Rossi, E., Glidewell, S.C., Zuffardi, O., Mattina, T., Ivy, D.D., Curfs, L.M., Mattson, S.N., Riley, E.P., Treier, M. and Grossfeld, P.D. 2009. Chromosomal microarray mapping suggests a role for BSX and Neurogranin in neurocognitive and behavioral defects in the 11q terminal deletion disorder (Jacobsen syndrome). *Neurogenetics* 10: 89-95.

CHROMOSOMAL LOCATION

Genetic locus: SLC35F2 (human) mapping to 11q22.3.

SOURCE

SLC35F2 (F-23) is a Protein A purified rabbit polyclonal antibody raised against synthetic SLC35F2 peptide of human origin.

PRODUCT

Each vial contains 100 µg IgG in 1.0 ml PBS with < 0.1% sodium azide, 0.1% gelatin and < 0.02% sucrose.

RESEARCH USE

For research use only, not for use in diagnostic procedures.

APPLICATIONS

SLC35F2 (F-23) is recommended for detection of SLC35F2 of human origin by Western Blotting (starting dilution 1:200, dilution range 1:100-1:1000), immunoprecipitation [1-2 µg per 100-500 µg of total protein (1 ml of cell lysate)], immunofluorescence (starting dilution 1:50, dilution range 1:50-1:500), immunohistochemistry (including paraffin-embedded sections) (starting dilution 1:50, dilution range 1:50-1:500) and solid phase ELISA (starting dilution 1:30, dilution range 1:30-1:3000).

Suitable for use as control antibody for SLC35F2 siRNA (h): sc-96823, SLC35F2 shRNA Plasmid (h): sc-96823-SH and SLC35F2 shRNA (h) Lentiviral Particles: sc-96823-V.

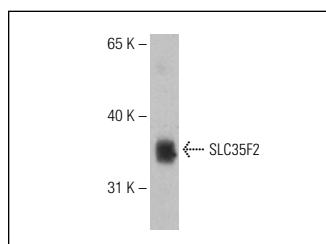
Molecular Weight of SLC35F2 isoforms: 41/39/36 kDa.

Positive Controls: Human SLC35F2 transfected 293T whole cell lysate.

RECOMMENDED SECONDARY REAGENTS

To ensure optimal results, the following support (secondary) reagents are recommended: 1) Western Blotting: use goat anti-rabbit IgG-HRP: sc-2004 (dilution range: 1:2000-1:100,000) or Cruz Marker™ compatible goat anti-rabbit IgG-HRP: sc-2030 (dilution range: 1:2000-1:5000), Cruz Marker™ Molecular Weight Standards: sc-2035, TBS Blotto A Blocking Reagent: sc-2333 and Western Blotting Luminol Reagent: sc-2048. 2) Immunoprecipitation: use Protein A/G PLUS-Agarose: sc-2003 (0.5 ml agarose/2.0 ml). 3) Immunofluorescence: use goat anti-rabbit IgG-FITC: sc-2012 (dilution range: 1:100-1:400) or goat anti-rabbit IgG-TR: sc-2780 (dilution range: 1:100-1:400) with UltraCruz™ Mounting Medium: sc-24941. 4) Immunohistochemistry: use ImmunoCruz™: sc-2051 or ABC: sc-2018 rabbit IgG Staining Systems.

DATA



SLC35F2 (F-23): sc-134008. Western blot analysis of human SLC35F2 transfected 293T whole cell lysate.

STORAGE

Store at 4° C, ****DO NOT FREEZE****. Stable for one year from the date of shipment. Non-hazardous. No MSDS required.

PROTOCOLS

See our web site at www.scbt.com or our catalog for detailed protocols and support products.