

# SNIP1 (J-21): sc-134021

## BACKGROUND

Members of the transforming growth factor- $\beta$  (TGF- $\beta$ ) superfamily play critical roles in controlling cell growth and differentiation. Effects of TGF- $\beta$  family ligands are mediated by Smad proteins. The Smad nuclear interacting protein (SNIP1) contains a forkhead-associated (FHA) domain and acts as a nuclear inhibitor of CBP/p300. SNIP1 potently inhibits the activity of NF $\kappa$ B, which binds the C/H1 domain of CBP/p300, by competing for the binding site. SNIP1 is also thought to induce expression of Cyclin D1 to promote cellular proliferation. SNIP1 is ubiquitously expressed with high expression in heart and skeletal muscle.

## REFERENCES

- Kim, R.H., Wang, D., Tsang, M., Martin, J., Huff, C., de Caestecker, M.P., Parks, W.T., Meng, X., Lechleider, R.J., Wang, T. and Roberts, A.B. 2000. A novel smad nuclear interacting protein, SNIP1, suppresses p300-dependent TGF- $\beta$  signal transduction. *Genes Dev.* 14: 1605-1616.
- Kim, R.H., Flanders, K.C., Birkey Reffey, S., Anderson, L.A., Duckett, C.S., Perkins, N.D. and Roberts, A.B. 2001. SNIP1 inhibits NF $\kappa$ B signaling by competing for its binding to the C/H1 domain of CBP/p300 transcriptional co-activators. *J. Biol. Chem.* 276: 46297-46304.
- Lin, Y., Martin, J., Gruendler, C., Farley, J., Meng, X., Li, B.Y., Lechleider, R., Huff, C., Kim, R.H., Grasser, W.A., Paralkar, V. and Wang, T. 2002. A novel link between the proteasome pathway and the signal transduction pathway of the bone morphogenetic proteins (BMPs). *BMC Cell Biol.* 3: 15.
- Wang, T. 2003. The 26S proteasome system in the signaling pathways of TGF- $\beta$  superfamily. *Front. Biosci.* 8: d1109-1127.
- Roche, K.C., Wiechens, N., Owen-Hughes, T. and Perkins, N.D. 2004. The FHA domain protein SNIP1 is a regulator of the cell cycle and cyclin D1 expression. *Oncogene* 23: 8185-8195.
- Mouillet, J.F., Sonnenberg-Hirche, C., Yan, X. and Sadovsky, Y. 2004. p300 regulates the synergy of steroidogenic factor-1 and early growth response-1 in activating luteinizing hormone- $\beta$  subunit gene. *J. Biol. Chem.* 279: 7832-7839.

## CHROMOSOMAL LOCATION

Genetic locus: SNIP1 (human) mapping to 1p34.3.

## SOURCE

SNIP1 (J-21) is an affinity purified rabbit polyclonal antibody raised against synthetic SNIP1 peptide of human origin.

## PRODUCT

Each vial contains 50  $\mu$ g IgG in 500  $\mu$ l PBS with < 0.1% sodium azide, 0.1% gelatin and < 0.02% sucrose.

## STORAGE

Store at 4° C, **\*\*DO NOT FREEZE\*\***. Stable for one year from the date of shipment. Non-hazardous. No MSDS required.

## APPLICATIONS

SNIP1 (J-21) is recommended for detection of SNIP1 of human origin by Western Blotting (starting dilution 1:200, dilution range 1:100-1:1000), immunoprecipitation [1-2  $\mu$ g per 100-500  $\mu$ g of total protein (1 ml of cell lysate)] and solid phase ELISA (starting dilution 1:30, dilution range 1:30-1:3000).

Suitable for use as control antibody for SNIP1 siRNA (h): sc-61581, SNIP1 shRNA Plasmid (h): sc-61581-SH and SNIP1 shRNA (h) Lentiviral Particles: sc-61581-V.

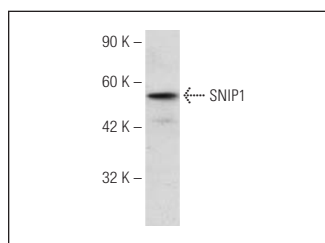
Molecular Weight of SNIP1: 45.8 kDa.

Positive Controls: Jurkat whole cell lysate: sc-2204.

## RECOMMENDED SECONDARY REAGENTS

To ensure optimal results, the following support (secondary) reagents are recommended: 1) Western Blotting: use goat anti-rabbit IgG-HRP: sc-2004 (dilution range: 1:2000-1:100,000) or Cruz Marker™ compatible goat anti-rabbit IgG-HRP: sc-2030 (dilution range: 1:2000-1:5000), Cruz Marker™ Molecular Weight Standards: sc-2035, TBS Blotto A Blocking Reagent: sc-2333 and Western Blotting Luminol Reagent: sc-2048. 2) Immunoprecipitation: use Protein A/G PLUS-Agarose: sc-2003 (0.5 ml agarose/2.0 ml).

## DATA



SNIP1 (J-21): sc-134021. Western blot analysis of SNIP1 expression in Jurkat whole cell lysate.

## RESEARCH USE

For research use only, not for use in diagnostic procedures.

## PROTOCOLS

See our web site at [www.scbt.com](http://www.scbt.com) or our catalog for detailed protocols and support products.