

# SPATA12 (K-22): sc-134027

## BACKGROUND

SPATA12 (spermatogenesis-associated protein 12), also known as SRG5 (spermatogenesis-related protein 5), is a 190 amino acid protein that may be involved in the regulation of spermatogenesis. SPATA12 is expressed in normal adult testis, but is absent in fetal testis, implying that it may be involved in the development of testicular maturation. Specifically, SPATA12 is expressed in spermatocytes, spermatids and spermatozoa, with no expression in Leydig and Sertoli cells. Studies with HeLa and GC-1 germ cells indicate that expression of the SPATA12 gene may delay the progression of G<sub>1</sub> to S in the cell cycle, therefore it is thought that SPATA12 maintains the cell in a differentiated state and suppresses cell proliferation.

## REFERENCES

1. Onisto, M., Slongo, L.M., Graziotto, R., Zotti, L., Negro, A., Merico, M., Moro, E., Foresta, C., Maurizio, O., Liliana, S.M., Romina, G., Lorenza, Z., Alessandro, N., Maurizio, M., Enrico, M. and Carlo, F. 2001. Evidence for FSH-dependent upregulation of SPATA2 (spermatogenesis-associated protein 2). *Biochem. Biophys. Res. Commun.* 283: 86-92.
2. Li, D. and Lu, G.X. 2004. Identification and expression of a novel human testis-specific gene by digital differential display. *Chin. Med. J.* 117: 1791-1796.
3. Li, D., Lu, G.X., Fu, J.J., Mo, Y.Q., Xing, X.W. and Liu, G. 2004. Molecular cloning and expression analysis of a novel human testis-specific gene. *Yi Chuan Xue Bao* 31: 545-551.
4. Liu, S., Liu, B., He, S., Zhao, Y. and Wang, Z. 2005. Cloning and characterization of zebra fish SPATA4 gene and analysis of its gonad specific expression. *Biochemistry Mosc.* 70: 638-644.
5. Online Mendelian Inheritance in Man, OMIM™. 2006. Johns Hopkins University, Baltimore, MD. MIM Number: 609869. World Wide Web URL: <http://www.ncbi.nlm.nih.gov/omim/>
6. Dan, L., Lifang, Y. and Guangxiu, L. 2007. Expression and possible functions of a novel gene SPATA12 in human testis. *J. Androl.* 28: 502-512.

## CHROMOSOMAL LOCATION

Genetic locus: SPATA12 (human) mapping to 3p14.3.

## SOURCE

SPATA12 (K-22) is an affinity purified rabbit polyclonal antibody raised against synthetic SPATA12 peptide of human origin.

## PRODUCT

Each vial contains 50 µg IgG in 500 µl PBS with < 0.1% sodium azide, 0.1% gelatin and < 0.02% sucrose.

## STORAGE

Store at 4° C, **\*\*DO NOT FREEZE\*\***. Stable for one year from the date of shipment. Non-hazardous. No MSDS required.

## APPLICATIONS

SPATA12 (K-22) is recommended for detection of SPATA12 of human origin by Western Blotting (starting dilution 1:200, dilution range 1:100-1:1000), immunoprecipitation [1-2 µg per 100-500 µg of total protein (1 ml of cell lysate)] and solid phase ELISA (starting dilution 1:30, dilution range 1:30-1:3000).

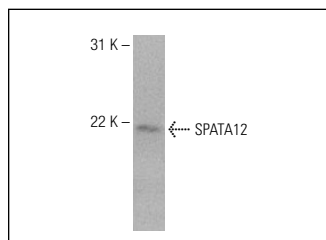
Suitable for use as control antibody for SPATA12 siRNA (h): sc-78018, SPATA12 shRNA Plasmid (h): sc-78018-SH and SPATA12 shRNA (h) Lentiviral Particles: sc-78018-V.

Molecular Weight of SPATA12: 20 kDa.

## RECOMMENDED SECONDARY REAGENTS

To ensure optimal results, the following support (secondary) reagents are recommended: 1) Western Blotting: use goat anti-rabbit IgG-HRP: sc-2004 (dilution range: 1:2000-1:100,000) or Cruz Marker™ compatible goat anti-rabbit IgG-HRP: sc-2030 (dilution range: 1:2000-1:5000), Cruz Marker™ Molecular Weight Standards: sc-2035, TBS Blotto A Blocking Reagent: sc-2333 and Western Blotting Luminol Reagent: sc-2048. 2) Immunoprecipitation: use Protein A/G PLUS-Agarose: sc-2003 (0.5 ml agarose/2.0 ml).

## DATA



SPATA12 (K-22): sc-134027. Western blot analysis of SPATA12 expression in Jurkat whole cell lysate.

## RESEARCH USE

For research use only, not for use in diagnostic procedures.

## PROTOCOLS

See our web site at [www.scbt.com](http://www.scbt.com) or our catalog for detailed protocols and support products.