

# SPPase2 (K-25): sc-134030

## BACKGROUND

Sphingosine-1-phosphate (S1P) is a lipid that functions in a variety of intracellular and extracellular biological events. The intracellular activity of S1P is regulated by its state of phosphorylation and is therefore controlled by SPP kinases (SphKs) and S1P phosphatases (SPPases). The mammalian SPPases belong to the type 2 lipid phosphate phosphatase family of N-ethylmaleimide insensitive, magnesium-independent, multi-pass membrane proteins. Characteristic of their family, SPPases contain three conserved motifs that comprise the active site of the enzyme: the SXH motif, the KXXXXXXRP motif and the SRXXXXHXXD motif. SPPase2, also known as SGPP2 or SPP2, localizes to the membrane of the endoplasmic reticulum (ER) and is predominantly expressed in kidney and heart with lower levels found in colon, lung, brain and small intestine. SPPase2 specifically dephosphorylates S1P, dihydro-S1P and phyto-S1P. The overexpression of SPPases can lead to an elevation in the levels of ceramide and can induce apoptosis.

## REFERENCES

- Mandala, S.M. 2001. Sphingosine-1-phosphate phosphatases. *Prostaglandins* 64: 143-156.
- Cuvillier, O. 2002. Sphingosine in apoptosis signaling. *Biochim. Biophys. Acta* 1585: 153-162.
- Le Stunff, H., Galve-Roperh, I., Peterson, C., Milstien, S. and Spiegel, S. 2002. Sphingosine-1-phosphate phosphohydrolase in regulation of sphingolipid metabolism and apoptosis. *J. Cell Biol.* 158: 1039-1049.
- Ogawa, C., Kihara, A., Gokoh, M. and Igarashi, Y. 2003. Identification and characterization of a novel human sphingosine-1-phosphate phosphohydrolase, hSPP2. *J. Biol. Chem.* 278: 1268-1272.
- Johnson, K.R., Johnson, K.Y., Becker, K.P., Bielawski, J., Mao, C. and Obeid, L.M. 2003. Role of human sphingosine-1-phosphate phosphatase 1 in the regulation of intra- and extracellular sphingosine-1-phosphate levels and cell viability. *J. Biol. Chem.* 278: 34541-34547.
- Saba, J.D. and Hla, T. 2004. Point-counterpoint of sphingosine-1-phosphate metabolism. *Circ. Res.* 94: 724-734.
- Pyne, S., Kong, K.C. and Darroch, P.I. 2004. Lysophosphatidic acid and sphingosine-1-phosphate biology: the role of lipid phosphate phosphatases. *Semin. Cell Dev. Biol.* 15: 491-501.
- Le Stunff, H., Mikami, A., Giussani, P., Hobson, J.P., Jolly, P.S., Milstien, S. and Spiegel, S. 2004. Role of sphingosine-1-phosphate phosphatase 1 in epidermal growth factor-induced chemotaxis. *J. Biol. Chem.* 279: 34290-34297.
- Wendler, C.C. and Rivkees, S.A. 2006. Sphingosine-1-phosphate inhibits cell migration and endothelial to mesenchymal cell transformation during cardiac development. *Dev. Biol.* 291: 264-277.

## CHROMOSOMAL LOCATION

Genetic locus: SGPP2 (human) mapping to 2q36.1.

## RESEARCH USE

For research use only, not for use in diagnostic procedures.

## SOURCE

SPPase2 (K-25) is a Protein A purified rabbit polyclonal antibody raised against synthetic SPPase2 peptide of human origin.

## PRODUCT

Each vial contains 100 µg IgG in 1.0 ml PBS with < 0.1% sodium azide, 0.1% gelatin and < 0.02% sucrose.

## APPLICATIONS

SPPase2 (K-25) is recommended for detection of SPPase2 of human origin by Western Blotting (starting dilution 1:200, dilution range 1:100-1:1000), immunofluorescence (starting dilution 1:50, dilution range 1:50-1:500), immunohistochemistry (including paraffin-embedded sections) (starting dilution 1:50, dilution range 1:50-1:500) and solid phase ELISA (starting dilution 1:30, dilution range 1:30-1:3000).

Suitable for use as control antibody for SPPase2 siRNA (h): sc-63062, SPPase2 shRNA Plasmid (h): sc-63062-SH and SPPase2 shRNA (h) Lentiviral Particles: sc-63062-V.

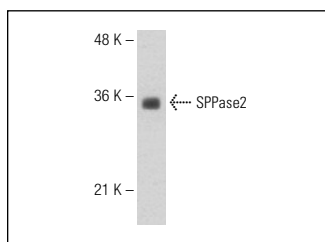
Molecular Weight of SPPase2 isoforms: 45/30 kDa.

Positive Controls: Hep G2 cell lysate: sc-2227.

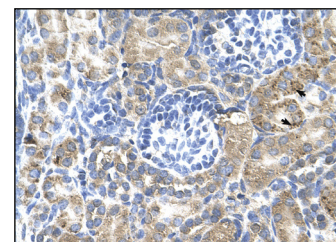
## RECOMMENDED SECONDARY REAGENTS

To ensure optimal results, the following support (secondary) reagents are recommended: 1) Western Blotting: use goat anti-rabbit IgG-HRP: sc-2004 (dilution range: 1:2000-1:100,000) or Cruz Marker™ compatible goat anti-rabbit IgG-HRP: sc-2030 (dilution range: 1:2000-1:5000), Cruz Marker™ Molecular Weight Standards: sc-2035, TBS Blotto A Blocking Reagent: sc-2333 and Western Blotting Luminol Reagent: sc-2048. 2) Immunofluorescence: use goat anti-rabbit IgG-FITC: sc-2012 (dilution range: 1:100-1:400) or goat anti-rabbit IgG-TR: sc-2780 (dilution range: 1:100-1:400) with UltraCruz™ Mounting Medium: sc-24941. 3) Immunohistochemistry: use ImmunoCruz™: sc-2051 or ABC: sc-2018 rabbit IgG Staining Systems.

## DATA



SPPase2 (K-25): sc-134030. Western blot analysis of SPPase2 expression in Hep G2 whole cell lysate.



SPPase2 (K-25): sc-134030. Immunoperoxidase staining of formalin-fixed, paraffin-embedded human kidney tissue showing cytoplasmic localization.

## STORAGE

Store at 4° C, \*\*DO NOT FREEZE\*\*. Stable for one year from the date of shipment. Non-hazardous. No MSDS required.