

SSTR4 (O-24): sc-134039

BACKGROUND

SSTRs (for somatostatin receptors) represent a family of G-protein-coupled receptors which mediate the diverse biological actions of somatostatin (SST). There are five distinct subtypes of SSTRs that bind two natural ligands, SST-14 and SST-28. SSTR2 gives rise to spliced variants, SSTR2A and 2B. SSTRs share common signaling pathways such as the ability to inhibit adenylyl cyclase via GTP binding proteins. Some of the subtypes are also coupled to tyrosine phosphatase (SSTR1,2), Ca²⁺ channels (SSTR2), Na⁺/H⁺ exchanger (SSTR1), PLA-2 (SSTR4), and MAP kinase (SSTR4). Individual target cells typically express more than one SSTR subtype and often all five isoforms. Subtypes of SSTR can form functional homo- and heterodimers.

REFERENCES

- Patel, Y.C., Panetta, R., Escher, E., Greenwood, M. and Srikant, C.B. 1994. Expression of multiple somatostatin receptor genes in AtT-20 cells. Evidence for a novel somatostatin-28 selective receptor subtype. *J. Biol. Chem.* 269: 1506-1509.
- Reardon, D.B., Dent, P., Wood, S.L., Kong, T. and Sturgill, T.W. 1997. Activation *in vitro* of somatostatin receptor subtypes 2, 3, or 4 stimulates protein tyrosine phosphatase activity in membranes from transfected Ras-transformed NIH 3T3 cells: coexpression with catalytically inactive SHP-2 blocks responsiveness. *Mol. Endocrinol.* 11: 1062-1069.
- Patel, Y.C. 1999. Somatostatin and its receptor family. *Front. Neuroendocrinol.* 20: 157-198.
- Sharma, K., Patel, Y.C. and Srikant, C.B. 1999. C-terminal region of human somatostatin receptor 5 is required for induction of Rb and G₁ cell cycle arrest. *Mol. Endocrinol.* 13: 82-90.
- Kumar, U., Sasi, R., Suresh, S., Patel, A., Thangaraju, M., Metrakos, P., Patel, S.C. and Patel, Y.C. 1999. Subtype-selective expression of the five somatostatin receptors (hSSTR1-5) in human pancreatic islet cells: a quantitative double-label immuno-histochemical analysis. *Diabetes* 48: 77-85.
- Rocheville, M., Lange, D.C., Kumar, U., Sasi, R., Patel, R.C. and Patel, Y.C. 2000. Subtypes of the somatostatin receptor assemble as functional homo- and heterodimers. *J. Biol. Chem.* 275: 7862-7869.
- Rocheville, M., Lange, D.C., Kumar, U., Patel, S.C., Patel, R.C. and Patel, Y.C. 2000. Receptors for dopamine and somatostatin: formation of hetero-oligomers with enhanced functional activity. *Science* 288: 154-157.

CHROMOSOMAL LOCATION

Genetic locus: SSTR4 (human) mapping to 20p11.21.

SOURCE

SSTR4 (O-24) is an affinity purified rabbit polyclonal antibody raised against synthetic SSTR4 peptide of human origin.

PRODUCT

Each vial contains 50 µg IgG in 500 µl PBS with < 0.1% sodium azide, 0.1% gelatin and < 0.02% sucrose.

APPLICATIONS

SSTR4 (O-24) is recommended for detection of SSTR4 of human origin by Western Blotting (starting dilution 1:200, dilution range 1:100-1:1000), immunoprecipitation [1-2 µg per 100-500 µg of total protein (1 ml of cell lysate)] and solid phase ELISA (starting dilution 1:30, dilution range 1:30-1:3000).

Suitable for use as control antibody for SSTR4 siRNA (h): sc-42275, SSTR4 shRNA Plasmid (h): sc-42275-SH and SSTR4 shRNA (h) Lentiviral Particles: sc-42275-V.

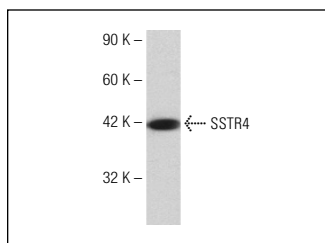
Molecular Weight of SSTR4: 70 kDa.

Positive Controls: Jurkat whole cell lysate: sc-2204.

RECOMMENDED SECONDARY REAGENTS

To ensure optimal results, the following support (secondary) reagents are recommended: 1) Western Blotting: use goat anti-rabbit IgG-HRP: sc-2004 (dilution range: 1:2000-1:100,000) or Cruz Marker™ compatible goat anti-rabbit IgG-HRP: sc-2030 (dilution range: 1:2000-1:5000), Cruz Marker™ Molecular Weight Standards: sc-2035, TBS Blotto A Blocking Reagent: sc-2333 and Western Blotting Luminol Reagent: sc-2048. 2) Immunoprecipitation: use Protein A/G PLUS-Agarose: sc-2003 (0.5 ml agarose/2.0 ml).

DATA



SSTR4 (O-24): sc-134039. Western blot analysis of SSTR4 expression in Jurkat whole cell lysate.

STORAGE

Store at 4° C, ****DO NOT FREEZE****. Stable for one year from the date of shipment. Non-hazardous. No MSDS required.

RESEARCH USE

For research use only, not for use in diagnostic procedures.

PROTOCOLS

See our web site at www.scbt.com or our catalog for detailed protocols and support products.