

# TBPL2 (T-22): sc-134057

## BACKGROUND

TATA box-binding protein-like protein 2 (TBPL2), also known as TATA box-binding protein-related factor 3 (TRF3), is a 350 amino acid protein belonging to the TBP family. Like most TBP family members, TBPL2 has a virtually identical C-terminal region to TBP, but is divergent in the N-terminus. TBPL2 acts as a transcription factor that forms a complex with TAF II p140 during the differentiation of myoblasts into myocytes. During an early stage in the differentiation process, the TBPL2/TAF II p140 complex replaces TFIID at specific promoters. Localized to the nucleus, as well as the cytoplasm during cytokinesis, TBPL2 is found in myofibers and myotubes. TBPL2 has highest expression in lung, ovary, heart, uterus, placenta and liver.

## REFERENCES

- Persengiev, S.P., Zhu, X., Dixit, B.L., Maston, G.A., Kittler, E.L. and Green, M.R. 2003. TRF3, a TATA-box-binding protein-related factor, is vertebrate-specific and widely expressed. *Proc. Natl. Acad. Sci. USA* 100: 14887-14891.
- Yang, Y., Cao, J., Huang, L., Fang, H.Y. and Sheng, H.Z. 2006. Regulated expression of TATA-binding protein-related factor 3 (TRF3) during early embryogenesis. *Cell Res.* 16: 610-621.
- Tanaka, Y., Nanba, Y.A., Park, K.A., Mabuchi, T., Suenaga, Y., Shiraishi, S., Shimada, M., Nakadai, T. and Tamura, T.A. 2007. Transcriptional repression of the mouse Wee 1 gene by TBP-related factor 2. *Biochem. Biophys. Res. Commun.* 352: 21-28.
- Di Pietro, C., Ragusa, M., Duro, L., Guglielmino, M.R., Barbagallo, D., Carnemolla, A., Laganà, A., Buffa, P., Angelica, R., Rinaldi, A., Calafato, M.S., Milicia, I., Caserta, C., Giugno, R., Pulvirenti, A., Giunta, V., Rapisarda, A., Di Pietro, V., Grillo, A., Messina, A., Ferro, A., Grzeschik, K.H. and Purrello, M. 2007. Genomics, evolution, and expression of TBPL2, a member of the TBP family. *DNA Cell Biol.* 26: 369-385.
- Deato, M.D. and Tjian, R. 2007. Switching of the core transcription machinery during myogenesis. *Genes Dev.* 21: 2137-2149.
- Gazdag, E., Rajkovic, A., Torres-Padilla, M.E. and Tora, L. 2007. Analysis of TATA-binding protein 2 (TBP2) and TBP expression suggests different roles for the two proteins in regulation of gene expression during oogenesis and early mouse development. *Reproduction* 134: 51-62.
- Deato, M.D., Marr, M.T., Sottero, T., Inouye, C., Hu, P. and Tjian, R. 2008. MyoD targets TAF3/TRF3 to activate myogenin transcription. *Mol. Cell* 32: 96-105.

## CHROMOSOMAL LOCATION

Genetic locus: *Tbpl2* (mouse) mapping to 2 A3.

## SOURCE

TBPL2 (T-22) is a Protein A purified rabbit polyclonal antibody raised against synthetic TBPL2 peptide of mouse origin.

## PRODUCT

Each vial contains 100 µg IgG in 1.0 ml PBS with < 0.1% sodium azide, 0.1% gelatin and < 0.02% sucrose.

## APPLICATIONS

TBPL2 (T-22) is recommended for detection of TBPL2 of mouse origin by Western Blotting (starting dilution 1:200, dilution range 1:100-1:1000), immunoprecipitation [1-2 µg per 100-500 µg of total protein (1 ml of cell lysate)] and solid phase ELISA (starting dilution 1:30, dilution range 1:30-1:3000).

Suitable for use as control antibody for TBPL2 siRNA (m): sc-154123, TBPL2 shRNA Plasmid (m): sc-154123-SH and TBPL2 shRNA (m) Lentiviral Particles: sc-154123-V.

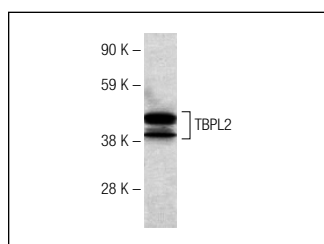
Molecular Weight of TBPL2: 55 kDa.

Positive Controls: SP2/0 whole cell lysate.

## RECOMMENDED SECONDARY REAGENTS

To ensure optimal results, the following support (secondary) reagents are recommended: 1) Western Blotting: use goat anti-rabbit IgG-HRP: sc-2004 (dilution range: 1:2000-1:100,000) or Cruz Marker™ compatible goat anti-rabbit IgG-HRP: sc-2030 (dilution range: 1:2000-1:5000), Cruz Marker™ Molecular Weight Standards: sc-2035, TBS Blotto A Blocking Reagent: sc-2333 and Western Blotting Luminol Reagent: sc-2048. 2) Immunoprecipitation: use Protein A/G PLUS-Agarose: sc-2003 (0.5 ml agarose/2.0 ml).

## DATA



TBPL2 (T-22): sc-134057. Western blot analysis of TBPL2 expression in SP2/0 whole cell lysate.

## STORAGE

Store at 4° C, **\*\*DO NOT FREEZE\*\***. Stable for one year from the date of shipment. Non-hazardous. No MSDS required.

## RESEARCH USE

For research use only, not for use in diagnostic procedures.

## PROTOCOLS

See our web site at [www.scbt.com](http://www.scbt.com) or our catalog for detailed protocols and support products.