

TBX15 (T-24): sc-134059

BACKGROUND

The T-box (TBX) motif is present in a family of genes whose structural features and expression patterns support their involvement in developmental gene regulation. The TBX gene family are largely conserved throughout meta-zoan evolution, and these genes code for putative transcription factors that share a uniquely defining DNA-binding domain. TBX genes are a family of developmental regulators with more than 20 members recently identified in invertebrates and vertebrates. Mutations in TBX genes are associated with the onset of several human diseases. Our understanding of functional mechanisms of TBX products has come mainly from the prototypical T/Brachyury, which is a transcription activator. The TBX genes constitute a family of transcriptional regulatory genes that are implicated in a variety of developmental processes ranging from the formation of germ layers to the organizational patterning of the central nervous system. TBX15, (T-box transcription factor TBX15), also designated TBX14, is a 602 amino acid protein. Mutations in the TBX15 gene are associated with Cousin syndrome a disorder characterized by short stature, craniofacial dysmorphism and hypoplasia of scapula and pelvis.

REFERENCES

1. Law, D.J., Gebuhr, T., Garvey, N., Agulnik, S.I. and Silver, L.M. 1995. Identification, characterization, and localization to chromosome 17q21-22 of the human TBX2 homolog, member of a conserved developmental gene family. *Mamm. Genome* 6: 793-797.
2. Agulnik, S.I., Papaioannou, V.E. and Silver, L.M. 1998. Cloning, mapping, and expression analysis of TBX15, a new member of the T-Box gene family. *Genomics* 51: 68-75.
3. Dheen, T., Sleptsova-Friedrich, I., Xu, Y., Clark, M., Lehrach, H., Gong, Z. and Korzh, V. 1999. Zebrafish TBX-C functions during formation of midline structures. *Development* 126: 2703-2713.
4. He, M.I., Wen, L., Campbell, C.E., Wu, J.Y. and Rao, Y. 1999. Transcription repression by *Xenopus* ET and its human ortholog TBX3, a gene involved in ulnar-mammary syndrome. *Proc. Natl. Acad. Sci. USA* 96: 10212-10217.
5. Begemann, G. and Ingham, P.W. 2000. Developmental regulation of TBX 5 in zebrafish embryogenesis. *Mech. Dev.* 90: 299-304.
6. Ahn, D.G., Ruvinsky, I., Oates, A.C., Silver, L.M. and Ho, R.K. 2000. TBX 20, a new vertebrate T-box gene expressed in the cranial motor neurons and developing cardiovascular structures in zebrafish. *Mech. Dev.* 95: 253-258.
7. Lausch, E., Hermanns, P., Farin, H.F., Alanay, Y., Unger, S., Nikkel, S., Steinwender, C., Scherer, G., Spranger, J., Zabel, B., Kispert, A. and Superti-Furga, A. 2008. TBX15 mutations cause craniofacial dysmorphism, hypoplasia of scapula and pelvis, and short stature in Cousin syndrome. *Am. J. Hum. Genet.* 83: 649-655.

CHROMOSOMAL LOCATION

Genetic locus: TBX15 (human) mapping to 1p12; Tbx15 (mouse) mapping to 3 F2.2.

RESEARCH USE

For research use only, not for use in diagnostic procedures.

SOURCE

TBX15 (T-24) is a Protein A purified rabbit polyclonal antibody raised against synthetic TBX14/15 peptide of human origin.

PRODUCT

Each vial contains 100 µg IgG in 1.0 ml PBS with < 0.1% sodium azide, 0.1% gelatin and < 0.02% sucrose.

APPLICATIONS

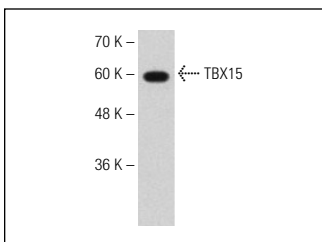
TBX15 (T-24) is recommended for detection of TBX15 of mouse, rat and human origin by Western Blotting (starting dilution 1:200, dilution range 1:100-1:1000), immunoprecipitation [1-2 µg per 100-500 µg of total protein (1 ml of cell lysate)], immunofluorescence (starting dilution 1:50, dilution range 1:50-1:500), immunohistochemistry (including paraffin-embedded sections) (starting dilution 1:50, dilution range 1:50-1:500) and solid phase ELISA (starting dilution 1:30, dilution range 1:30-1:3000).

Suitable for use as control antibody for TBX15 siRNA (h): sc-38477, TBX15 siRNA (m): sc-38478, TBX15 shRNA Plasmid (h): sc-38477-SH, TBX15 shRNA Plasmid (m): sc-38478-SH, TBX15 shRNA (h) Lentiviral Particles: sc-38477-V and TBX15 shRNA (m) Lentiviral Particles: sc-38478-V.

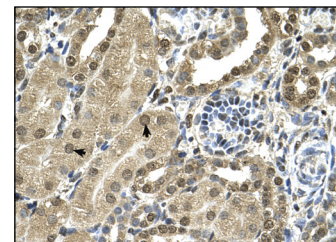
Molecular Weight of TBX15 isoforms: 66/55 kDa.

Positive Controls: Jurkat whole cell lysate: sc-2204.

DATA



TBX15 (T-24): sc-134059. Western blot analysis of TBX14/15 expression in Jurkat whole cell lysate.



TBX15 (T-24): sc-134059. Immunoperoxidase staining of formalin-fixed, paraffin-embedded human kidney tissue showing nuclear and cytoplasmic localization.

STORAGE

Store at 4° C, ****DO NOT FREEZE****. Stable for one year from the date of shipment. Non-hazardous. No MSDS required.

PROTOCOLS

See our web site at www.scbt.com or our catalog for detailed protocols and support products.