

TBX4 (U-22): sc-134062

BACKGROUND

The T-box (Tbx) motif is present in a family of genes whose structural features and expression patterns support their involvement in developmental gene regulation. The TBX gene family are largely conserved throughout metazoan evolution, and these genes code for putative transcription factors that share a uniquely defining DNA-binding domain. TBX genes are a family of developmental regulators with more than 20 members recently identified in invertebrates and vertebrates. Mutations in TBX genes are associated with the onset of several human diseases. Our understanding of functional mechanisms of TBX products has come mainly from the prototypical T/Brachyury, which is a transcription activator. The TBX genes constitute a family of transcriptional regulatory genes that are implicated in a variety of developmental processes ranging from the formation of germ layers to the organizational patterning of the central nervous system.

REFERENCES

1. Law, D.J., Gebuhr, T., Garvey, N., Agulnik, S.I. and Silver, L.M. 1995. Identification, characterization, and localization to chromosome 17q21-22 of the human TBX2 homolog, member of a conserved developmental gene family. *Mamm. Genome* 6: 793-797.
2. Agulnik, S.I., Papaioannou, V.E. and Silver, L.M. 1998. Cloning, mapping, and expression analysis of TBX15, a new member of the T-Box gene family. *Genomics* 51: 68-75.
3. Dheen, T., Sleptsova-Friedrich, I., Xu, Y., Clark, M., Lehrach, H., Gong, Z. and Korzh, V. 1999. Zebrafish TBX-C functions during formation of midline structures. *Development* 126: 2703-2713.
4. He, M.I., Wen, L., Campbell, C.E., Wu, J.Y. and Rao, Y. 1999. Transcription repression by *Xenopus* ET and its human ortholog TBX3, a gene involved in ulnar-mammary syndrome. *Proc. Natl. Acad. Sci. USA* 96: 10212-10217.
5. Begemann, G. and Ingham, P.W. 2000. Developmental regulation of TBX5 in zebrafish embryogenesis. *Mech. Dev.* 90: 299-304.
6. Ahn, D.G., Ruvinsky, I., Oates, A.C., Silver, L.M. and Ho, R.K. 2000. TBX20, a new vertebrate T-box gene expressed in the cranial motor neurons and developing cardiovascular structures in zebrafish. *Mech. Dev.* 95: 253-258.

CHROMOSOMAL LOCATION

Genetic locus: TBX4 (human) mapping to 17q23.2.

SOURCE

TBX4 (U-22) is an affinity purified rabbit polyclonal antibody raised against synthetic TBX4 peptide of human origin.

PRODUCT

Each vial contains 50 µg IgG in 500 µl PBS with < 0.1% sodium azide, 0.1% gelatin and < 0.02% sucrose.

STORAGE

Store at 4° C, ****DO NOT FREEZE****. Stable for one year from the date of shipment. Non-hazardous. No MSDS required.

APPLICATIONS

TBX4 (U-22) is recommended for detection of TBX4 of human and rat origin by Western Blotting (starting dilution 1:200, dilution range 1:100-1:1000), immunoprecipitation [1-2 µg per 100-500 µg of total protein (1 ml of cell lysate)] and solid phase ELISA (starting dilution 1:30, dilution range 1:30-1:3000).

Suitable for use as control antibody for TBX4 siRNA (h): sc-38471, TBX4 shRNA Plasmid (h): sc-38471-SH and TBX4 shRNA (h) Lentiviral Particles: sc-38471-V.

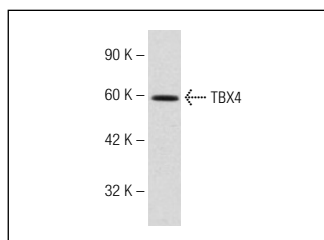
Molecular Weight of TBX4: 60 kDa.

Positive Controls: HeLa whole cell lysate: sc-2200 or Hep G2 cell lysate: sc-2227.

RECOMMENDED SECONDARY REAGENTS

To ensure optimal results, the following support (secondary) reagents are recommended: 1) Western Blotting: use goat anti-rabbit IgG-HRP: sc-2004 (dilution range: 1:2000-1:100,000) or Cruz Marker™ compatible goat anti-rabbit IgG-HRP: sc-2030 (dilution range: 1:2000-1:5000), Cruz Marker™ Molecular Weight Standards: sc-2035, TBS Blotto A Blocking Reagent: sc-2333 and Western Blotting Luminol Reagent: sc-2048. 2) Immunoprecipitation: use Protein A/G PLUS-Agarose: sc-2003 (0.5 ml agarose/2.0 ml).

DATA



TBX4 (U-22): sc-134062. Western blot analysis of TBX4 expression in Hep G2 whole cell lysate.

RESEARCH USE

For research use only, not for use in diagnostic procedures.

PROTOCOLS

See our web site at www.scbt.com or our catalog for detailed protocols and support products.