

# TRABD (E-22): sc-134107

## BACKGROUND

TRABD (TraB domain-containing protein) is a 376 amino acid protein whose gene is encoded by human chromosome 22, which contains over 500 genes and about 49 million bases. Being the second smallest human chromosome, 22 contains a surprising variety of interesting genes. Phelan-McDermid syndrome, Neurofibromatosis type 2 and autism are associated with chromosome 22. A schizophrenia susceptibility locus has been identified on chromosome 22 and studies show that 22q11 deletion symptoms include a high incidence of schizophrenia. Translocations between chromosomes 9 and 22 may lead to the formation of the Philadelphia Chromosome and the subsequent production of the novel fusion protein, BCR-Abl, a potent cell proliferation activator found in several types of leukemia. There are two isoforms of TRABD that are produced as a result of alternative splicing events.

## REFERENCES

- Schwab, S.G. and Wildenauer, D.B. 1999. Chromosome 22 workshop report. *Am. J. Med. Genet.* 88: 276-278.
- Dunham, I., Shimizu, N., Roe, B.A., Chissole, S., Hunt, A.R., Collins, J.E., Bruskiwich, R., Beare, D.M., Clamp, M., Smink, L.J., Ainscough, R., Almeida, J.P., Babbage, A., Bagguley, C., Bailey, J., Barlow, K., Bates, K.N., et al. 1999. The DNA sequence of human chromosome 22. *Nature* 402: 489-495.
- Hattori, A., Okumura, K., Nagase, T., Kikuno, R., Hirose, M. and Ohara, O. 2000. Characterization of long cDNA clones from human adult spleen. *DNA Res.* 7: 357-366.
- Collins, J.E., Goward, M.E., Cole, C.G., Smink, L.J., Huckle, E.J., Knowles, S., Bye, J.M., Beare, D.M. and Dunham, I. 2003. Reevaluating human gene annotation: a second-generation analysis of chromosome 22. *Genome Res.* 13: 27-36.
- Collins, J.E., Wright, C.L., Edwards, C.A., Davis, M.P., Grinham, J.A., Cole, C.G., Goward, M.E., Aguado, B., Mallya, M., Mokrab, Y., Huckle, E.J., Beare, D.M. and Dunham, I. 2004. A genome annotation-driven approach to cloning the human ORFeome. *Genome Biol.* 5: R84.
- Arinami, T. 2006. Analyses of the associations between the genes of 22q11 deletion syndrome and schizophrenia. *J. Hum. Genet.* 51: 1037-1045.

## CHROMOSOMAL LOCATION

Genetic locus: TRABD (human) mapping to 22q13.33; Trabd (mouse) mapping to 15 E3.

## SOURCE

TRABD (E-22) is a Protein A purified rabbit polyclonal antibody raised against synthetic TRABD peptide of human origin.

## STORAGE

Store at 4° C, **\*\*DO NOT FREEZE\*\***. Stable for one year from the date of shipment. Non-hazardous. No MSDS required.

## RESEARCH USE

For research use only, not for use in diagnostic procedures.

## PRODUCT

Each vial contains 100 µg IgG in 1.0 ml PBS with < 0.1% sodium azide, 0.1% gelatin and < 0.02% sucrose.

## APPLICATIONS

TRABD (E-22) is recommended for detection of TRABD of mouse, rat and human origin by Western Blotting (starting dilution 1:200, dilution range 1:100-1:1000), immunoprecipitation [1-2 µg per 100-500 µg of total protein (1 ml of cell lysate)] and solid phase ELISA (starting dilution 1:30, dilution range 1:30-1:3000).

Suitable for use as control antibody for TRABD siRNA (h): sc-76722, TRABD siRNA (m): sc-154576, TRABD shRNA Plasmid (h): sc-76722-SH, TRABD shRNA Plasmid (m): sc-154576-SH, TRABD shRNA (h) Lentiviral Particles: sc-76722-V and TRABD shRNA (m) Lentiviral Particles: sc-154576-V.

Molecular Weight of TRABD isoform 1: 42 kDa.

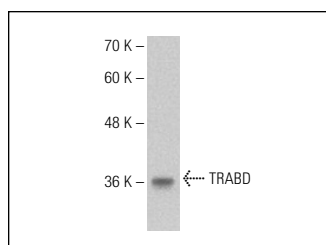
Molecular Weight of TRABD isoform 2: 37 kDa.

Positive Controls: Hep G2 cell lysate: sc-2227.

## RECOMMENDED SECONDARY REAGENTS

To ensure optimal results, the following support (secondary) reagents are recommended: 1) Western Blotting: use goat anti-rabbit IgG-HRP: sc-2004 (dilution range: 1:2000-1:100,000) or Cruz Marker™ compatible goat anti-rabbit IgG-HRP: sc-2030 (dilution range: 1:2000-1:5000), Cruz Marker™ Molecular Weight Standards: sc-2035, TBS Blotto A Blocking Reagent: sc-2333 and Western Blotting Luminol Reagent: sc-2048. 2) Immunoprecipitation: use Protein A/G PLUS-Agarose: sc-2003 (0.5 ml agarose/2.0 ml).

## DATA



TRABD (E-22): sc-134107. Western blot analysis of TRABD expression in Hep G2 whole cell lysate.

## PROTOCOLS

See our web site at [www.scbt.com](http://www.scbt.com) or our catalog for detailed protocols and support products.