

# TRUB2 (J-24): sc-134129

## BACKGROUND

TRUB2 (tRNA pseudouridine synthase 2) is a 331 amino acid protein that most likely is responsible for the synthesis of pseudouridine from isomerization of uracil in tRNA. TRUB2 contains one TruB domain and shares 30% sequence similarity with TRUB1. Both TRUB1 and TRUB2 are phylogenetically linked to the original eubacterial tRNA synthases and distinct from Dyskerin. The gene encoding TRUB2 maps to human chromosome 9, which houses over 900 genes and comprises nearly 4% of the human genome. Hereditary hemorrhagic telangiectasia, which is characterized by harmful vascular defects, and Familial dysautonomia, are both associated with chromosome 9. Notably, chromosome 9 encompasses the largest interferon family gene cluster.

## REFERENCES

1. Nurse, K., Wrzesinski, J., Bakin, A., Lane, B.G. and Ofengand, J. 1995. Purification, cloning, and properties of the tRNA psi 55 synthase from *Escherichia coli*. *RNA*. 1: 102-112.
2. Kinghorn, S.M., O'Byrne, C.P., Booth, I.R. and Stansfield, I. 2002. Physiological analysis of the role of truB in *Escherichia coli*: a role for tRNA modification in extreme temperature resistance. *Microbiology* 148: 3511-3520.
3. Zucchini, C., Strippoli, P., Biolchi, A., Solmi, R., Lenzi, L., D'Addabbo, P., Carinci, P. and Valvassori, L. 2003. The human TruB family of pseudouridine synthase genes, including the Dyskeratosis Congenita 1 gene and the novel member TRUB1. *Int. J. Mol. Med.* 11: 697-704.
4. Pan, H., Agarwalla, S., Moustakas, D.T., Finer-Moore, J. and Stroud, R.M. 2003. Structure of tRNA pseudouridine synthase TruB and its RNA complex: RNA recognition through a combination of rigid docking and induced fit. *Proc. Natl. Acad. Sci. USA* 100: 12648-12653.
5. Roovers, M., Hale, C., Tricot, C., Terns, M.P., Terns, R.M., Grosjean, H. and Droogmans, L. 2006. Formation of the conserved pseudouridine at position 55 in archaeal tRNA. *Nucleic Acids Res.* 34: 4293-4301.
6. Gurha, P., Joardar, A., Chaurasia, P. and Gupta, R. 2007. Differential roles of archaeal box H/ACA proteins in guide RNA-dependent and independent pseudouridine formation. *RNA Biol.* 4: 101-109.
7. Online Mendelian Inheritance in Man, OMIM<sup>™</sup>. 2007. Johns Hopkins University, Baltimore, MD. MIM Number: 610727. World Wide Web URL: <http://www.ncbi.nlm.nih.gov/omim/>

## CHROMOSOMAL LOCATION

Genetic locus: TRUB2 (human) mapping to 9q34.11.

## STORAGE

Store at 4° C, **\*\*DO NOT FREEZE\*\***. Stable for one year from the date of shipment. Non-hazardous. No MSDS required.

## PROTOCOLS

See our web site at [www.scbt.com](http://www.scbt.com) or our catalog for detailed protocols and support products.

## SOURCE

TRUB2 (J-24) is an affinity purified rabbit polyclonal antibody raised against synthetic TRUB2 peptide of human origin.

## PRODUCT

Each vial contains 50 µg IgG in 500 µl PBS with < 0.1% sodium azide, 0.1% gelatin and < 0.02% sucrose.

## APPLICATIONS

TRUB2 (J-24) is recommended for detection of TRUB2 of human origin by Western Blotting (starting dilution 1:200, dilution range 1:100-1:1000), immunoprecipitation [1-2 µg per 100-500 µg of total protein (1 ml of cell lysate)] and solid phase ELISA (starting dilution 1:30, dilution range 1:30-1:3000).

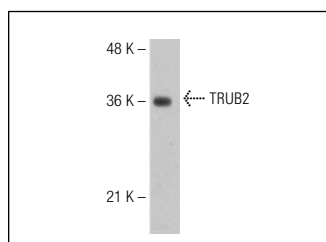
Suitable for use as control antibody for TRUB2 siRNA (h): sc-92702, TRUB2 shRNA Plasmid (h): sc-92702-SH and TRUB2 shRNA (h) Lentiviral Particles: sc-92702-V.

Molecular Weight of TRUB2: 37 kDa.

## RECOMMENDED SECONDARY REAGENTS

To ensure optimal results, the following support (secondary) reagents are recommended: 1) Western Blotting: use goat anti-rabbit IgG-HRP: sc-2004 (dilution range: 1:2000-1:100,000) or Cruz Marker<sup>™</sup> compatible goat anti-rabbit IgG-HRP: sc-2030 (dilution range: 1:2000-1:5000), Cruz Marker<sup>™</sup> Molecular Weight Standards: sc-2035, TBS Blotto A Blocking Reagent: sc-2333 and Western Blotting Luminol Reagent: sc-2048. 2) Immunoprecipitation: use Protein A/G PLUS-Agarose: sc-2003 (0.5 ml agarose/2.0 ml).

## DATA



TRUB2 (J-24): sc-134129. Western blot analysis of TRUB2 expression in Hep G2 whole cell lysate.

## RESEARCH USE

For research use only, not for use in diagnostic procedures.