

UBE2J2 (L-24): sc-134139

BACKGROUND

Ubiquitination is an important molecular mechanism by which abnormal or short-lived proteins are targeted for degradation by the concerted efforts of at least three classes of enzymes: ubiquitin-activating enzymes (E1s), ubiquitin-conjugating enzymes (E2s) and ubiquitin-protein ligases (E3s). UBE2J2 (ubiquitin-conjugating enzyme E2 J2), also known as NCUBE2 (non-canonical ubiquitin-conjugating enzyme 2), is a 259 amino acid single pass type IV membrane protein that belongs to the E2 ubiquitin-conjugating enzyme family and is involved in protein degradation. Localized to the membrane of the endoplasmic reticulum (ER), UBE2J2 catalyzes the attachment of ubiquitin to misfolded membrane proteins, thereby targeting them for proteasomal destruction. This ATP-dependent reaction yields AMP, a diphosphate and a ubiquitin-tagged protein and may be a method of quality control within the ER. Two isoforms of UBE2J2 exist due to alternative splicing events.

REFERENCES

- Gilon, T., Chomsky, O. and Kulka, R.G. 2000. Degradation signals recognized by the UBC6P-UBC7P ubiquitin-conjugating enzyme pair. *Mol. Cell. Biol.* 20: 7214-7219.
- Lester, D., Farquharson, C., Russell, G. and Houston, B. 2000. Identification of a family of noncanonical ubiquitin-conjugating enzymes structurally related to yeast UBC6. *Biochem. Biophys. Res. Commun.* 269: 474-480.
- Walter, J., Urban, J., Volkwein, C. and Sommer, T. 2001. Sec61p-independent degradation of the tail-anchored ER membrane protein UBC6P. *EMBO J.* 20: 3124-3131.
- Tiwari, S. and Weissman, A.M. 2001. Endoplasmic reticulum (ER)-associated degradation of T cell receptor subunits. Involvement of ER-associated ubiquitin-conjugating enzymes (E2s). *J. Biol. Chem.* 276: 16193-16200.
- Botero, D., Gereben, B., Goncalves, C., De Jesus, L.A., Harney, J.W. and Bianco, A.C. 2002. UBC6P and UBC7P are required for normal and substrate-induced endoplasmic reticulum-associated degradation of the human selenoprotein type 2 iodothyronine monodeiodinase. *Mol. Endocrinol.* 16: 1999-2007.
- Lenk, U., Yu, H., Walter, J., Gelman, M.S., Hartmann, E., Kopito, R.R. and Sommer, T. 2002. A role for mammalian Ubc6 homologues in ER-associated protein degradation. *J. Cell Sci.* 115 (Pt. 14): 3007-3014.

CHROMOSOMAL LOCATION

Genetic locus: UBE2J2 (human) mapping to 1p36.33; Ube2j2 (mouse) mapping to 4 E2.

SOURCE

UBE2J2 (L-24) is a Protein A purified rabbit polyclonal antibody raised against synthetic UBE2J2 peptide of human origin.

PRODUCT

Each vial contains 100 µg IgG in 1.0 ml PBS with < 0.1% sodium azide, 0.1% gelatin and < 0.02% sucrose.

APPLICATIONS

UBE2J2 (L-24) is recommended for detection of UBE2J2 of mouse, rat and human origin by Western Blotting (starting dilution 1:200, dilution range 1:100-1:1000), immunoprecipitation [1-2 µg per 100-500 µg of total protein (1 ml of cell lysate)], immunofluorescence (starting dilution 1:50, dilution range 1:50-1:500), immunohistochemistry (including paraffin-embedded sections) (starting dilution 1:50, dilution range 1:50-1:500) and solid phase ELISA (starting dilution 1:30, dilution range 1:30-1:3000).

Suitable for use as control antibody for UBE2J2 siRNA (h): sc-88839, UBE2J2 siRNA (m): sc-154854, UBE2J2 siRNA (r): sc-156131, UBE2J2 shRNA Plasmid (h): sc-88839-SH, UBE2J2 shRNA Plasmid (m): sc-154854-SH, UBE2J2 shRNA Plasmid (r): sc-156131-SH, UBE2J2 shRNA (h) Lentiviral Particles: sc-88839-V, UBE2J2 shRNA (m) Lentiviral Particles: sc-154854-V and UBE2J2 shRNA (r) Lentiviral Particles: sc-156131-V.

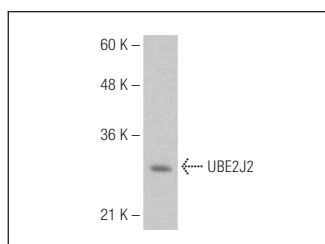
Molecular Weight of UBE2J2: 29 kDa.

Positive Controls: Hep G2 cell lysate: sc-2227.

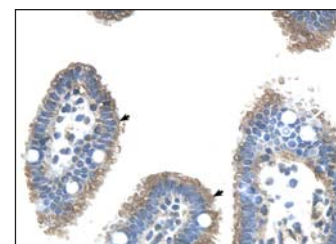
RECOMMENDED SECONDARY REAGENTS

To ensure optimal results, the following support (secondary) reagents are recommended: 1) Western Blotting: use goat anti-rabbit IgG-HRP: sc-2004 (dilution range: 1:2000-1:100,000) or Cruz Marker™ compatible goat anti-rabbit IgG-HRP: sc-2030 (dilution range: 1:2000-1:5000), Cruz Marker™ Molecular Weight Standards: sc-2035, TBS Blotto A Blocking Reagent: sc-2333 and Western Blotting Luminol Reagent: sc-2048. 2) Immunoprecipitation: use Protein A/G PLUS-Agarose: sc-2003 (0.5 ml agarose/2.0 ml). 3) Immunofluorescence: use goat anti-rabbit IgG-FITC: sc-2012 (dilution range: 1:100-1:400) or goat anti-rabbit IgG-TR: sc-2780 (dilution range: 1:100-1:400) with UltraCruz™ Mounting Medium: sc-24941. 4) Immunohistochemistry: use ImmunoCruz™: sc-2051 or ABC: sc-2018 rabbit IgG Staining Systems.

DATA



UBE2J2 (L-24): sc-134139. Western blot analysis of UBE2J2 expression in Hep G2 whole cell lysate.



UBE2J2 (L-24): sc-134139. Immunoperoxidase staining of formalin-fixed, paraffin-embedded human intestine tissue showing cytoplasmic localization.

STORAGE

Store at 4° C, **DO NOT FREEZE**. Stable for one year from the date of shipment. Non-hazardous. No MSDS required.

RESEARCH USE

For research use only, not for use in diagnostic procedures.