

## ZFY1 (T-24): sc-134164

### BACKGROUND

Zinc-finger proteins contain DNA-binding domains and have a wide variety of functions, most of which encompass some form of transcriptional activation or repression. The majority of zinc-finger proteins contain a Krüppel-type DNA binding domain and a KRAB domain, which is thought to interact with KAP1, thereby recruiting histone modifying proteins. ZFY1 (zinc-finger protein 1, Y linked), also known Zfy-1 is a 782 amino acid nuclear protein belonging to the krueppel C<sub>2</sub>H<sub>2</sub>-type zinc-finger protein family and the ZFX/ZFY subfamily. Containing thirteen C<sub>2</sub>H<sub>2</sub>-type zinc fingers, ZFY1 is expressed in the genital ridge and adult testis and may be a probable transcription activator. The gene encoding ZFY1 maps to mouse chromosome Y.

### REFERENCES

- Ashworth, A., Swift, S. and Affara, N. 1989. Sequence of cDNA for murine Zfy-1, a candidate for Tdy. *Nucleic Acids Res.* 17: 2864.
- Hayashida, H., Kuma, K. and Miyata, T. 1992. Interchromosomal gene conversion as a possible mechanism for explaining divergence patterns of ZFY-related genes. *J. Mol. Evol.* 35: 181-183.
- Pamilo, P. and Bianchi, N.O. 1993. Evolution of the ZFX and ZFY genes: rates and interdependence between the genes. *Mol. Biol. Evol.* 10: 271-281.
- Zambrowicz, B.P., Zimmermann, J.W., Harendza, C.J., Simpson, E.M., Page, D.C., Brinster, R.L. and Palmiter, R.D. 1994. Expression of a mouse Zfy1/LacZ transgene in the somatic cells of the embryonic gonad and germ cells of the adult testis. *Development* 120: 1549-1559.
- Zambrowicz, B.P., Findley, S.D., Simpson, E.M., Page, D.C. and Palmiter, R.D. 1994. Characterization of the murine Zfy-1 and Zfy-2 promoters. *Genomics* 24: 406-408.
- Mahaffey, C.L., Bayleran, J.K., Yeh, G.Y., Lee, T.C., Page, D.C. and Simpson, E.M. 1997. Intron/exon structure confirms that mouse Zfy1 and Zfy2 are members of the ZFY gene family. *Genomics* 41: 123-127.
- Nagamine, C.M. and Carlisle, C. 1997. Zfy2/1 fusion gene fails to replicate ZFY1 expression pattern in fetal gonads. *Genomics* 43: 397-398.
- Johnston, C.M., Shimeld, S.M. and Sharpe, P.T. 1998. Molecular evolution of the ZFY and ZNF6 gene families. *Mol. Biol. Evol.* 15: 129-137.
- Hansen, M.A., Nielsen, J.E., Tanaka, M., Almstrup, K., Skakkebaek, N.E. and Leffers, H. 2006. Identification and expression profiling of 10 novel spermatid expressed CYPT genes. *Mol. Reprod. Dev.* 73: 568-579.

### CHROMOSOMAL LOCATION

Genetic locus: Zfy1 (mouse) mapping to Y A1.

### STORAGE

Store at 4° C, **\*\*DO NOT FREEZE\*\***. Stable for one year from the date of shipment. Non-hazardous. No MSDS required.

### PROTOCOLS

See our web site at [www.scbt.com](http://www.scbt.com) or our catalog for detailed protocols and support products.

### SOURCE

ZFY1 (T-24) is a Protein A purified rabbit polyclonal antibody raised against synthetic ZFY1 peptide of mouse origin.

### PRODUCT

Each vial contains 100 µg IgG in 1.0 ml PBS with < 0.1% sodium azide, 0.1% gelatin and < 0.02% sucrose.

### APPLICATIONS

ZFY1 (T-24) is recommended for detection of ZFY1 of mouse origin by Western Blotting (starting dilution 1:200, dilution range 1:100-1:1000), immunoprecipitation [1-2 µg per 100-500 µg of total protein (1 ml of cell lysate)] and solid phase ELISA (starting dilution 1:30, dilution range 1:30-1:3000).

Suitable for use as control antibody for ZFY1 siRNA (m): sc-155600, ZFY1 shRNA Plasmid (m): sc-155600-SH and ZFY1 shRNA (m) Lentiviral Particles: sc-155600-V.

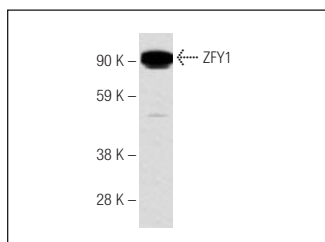
Molecular Weight of ZFY1: 88 kDa.

Positive Controls: NIH/3T3 whole cell lysate: sc-2210.

### RECOMMENDED SECONDARY REAGENTS

To ensure optimal results, the following support (secondary) reagents are recommended: 1) Western Blotting: use goat anti-rabbit IgG-HRP: sc-2004 (dilution range: 1:2000-1:100,000) or Cruz Marker™ compatible goat anti-rabbit IgG-HRP: sc-2030 (dilution range: 1:2000-1:5000), Cruz Marker™ Molecular Weight Standards: sc-2035, TBS Blotto A Blocking Reagent: sc-2333 and Western Blotting Luminol Reagent: sc-2048. 2) Immunofluorescence: use goat anti-rabbit IgG-FITC: sc-2012 (dilution range: 1:100-1:400) or goat anti-rabbit IgG-TR: sc-2780 (dilution range: 1:100-1:400) with UltraCruz™ Mounting Medium: sc-24941.

### DATA



ZFY1 (T-24): sc-134164. Western blot analysis of ZFY1 expression in NIH/3T3 whole cell lysate.

### RESEARCH USE

For research use only, not for use in diagnostic procedures.